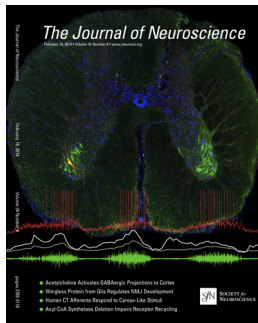


The Journal of Neuroscience

February 19, 2014 • Volume 34 Number 8 • www.jneurosci.org



Cover legend: During rhythmic motor patterns, a premotor network in the spinal cord provides balanced excitation (gray traces) and inhibition (white traces) to motoneurons (stained green in image) located in the ventral horns. The membrane potential of a single recorded motoneuron is shown in the red trace and hip flexor activity is shown in the green trace. Cell nuclei, many from spinal interneurons, are stained blue (DAPI). For more information, see the article by Petersen et al. (pages 2774–2784).

i This Week in The Journal

Journal Club

- 2765 **Dissociable Neural Networks Supporting Metacognition for Memory and Perception**
Jane Garrison

Brief Communications

- 2768 **Transgenerational Transmission of Hyperactivity in a Mouse Model of ADHD**
Jinmin Zhu, Kevin P. Lee, Thomas J. Spencer, Joseph Biederman, and Pradeep G. Bhide
- 2879 **Human C-Tactile Afferents Are Tuned to the Temperature of a Skin-Stroking Caress**
Rochelle Ackerley, Helena Backlund Wasling, Jaquette Liljencrantz, Håkan Olausson, Richard D. Johnson, and Johan Wessberg
- 3090 **Striatal Cholinergic Cell Ablation Attenuates L-DOPA Induced Dyskinesia in Parkinsonian Mice**
Lisa Won, Yunmin Ding, Pardeep Singh, and Un Jung Kang
- 3095 **A Protein Synthesis-Dependent Mechanism Sustains Calcium-Permeable AMPA Receptor Transmission in Nucleus Accumbens Synapses during Withdrawal from Cocaine Self-Administration**
Andrew F. Scheyer, Marina E. Wolf, and Kuei Y. Tseng

Articles

CELLULAR/MOLECULAR

- 2832 **Cholinergic Neurons Excite Cortically Projecting Basal Forebrain GABAergic Neurons**
Chun Yang, James T. McKenna, Janneke C. Zant, Stuart Winston, Radhika Basheer, and Ritchie E. Brown
- 2860 **Dual Effect of CTCF Loss on Neuroprogenitor Differentiation and Survival**
L. Ashley Watson, Xu Wang, Adrienne Elbert, Kristin D. Kernohan, Niels Galjart, and Nathalie G. Bérubé
- 2979 **Local Regulation of Neurofilament Transport by Myelinating Cells**
Paula C. Monsma, Yinyun Li, J. Daniel Fenn, Peter Jung, and Anthony Brown
- 2989 **Extracellular Calcium Controls the Expression of Two Different Forms of Ripple-Like Hippocampal Oscillations**
Paloma Aivar, Manuel Valero, Elisa Bellistri, and Liset Menendez de la Prida

DEVELOPMENT/PLASTICITY/REPAIR

- 2910 Glial Wingless/Wnt Regulates Glutamate Receptor Clustering and Synaptic Physiology at the *Drosophila* Neuromuscular Junction**
Kimberly S. Kerr, Yuly Fuentes-Medel, Cassandra Brewer, Romina Barria, James Ashley, Katharine C. Abruzzi, Amy Sheehan, Ozge E. Tasdemir-Yilmaz, Marc R. Freeman, and Vivian Budnik
- 2921 NFIB-Mediated Repression of the Epigenetic Factor *Ezh2* Regulates Cortical Development**
Michael Piper, Guy Barry, Tracey J. Harvey, Robert McLeay, Aaron G. Smith, Lachlan Harris, Sharon Mason, Brett W. Stringer, Bryan W. Day, Naomi R. Wray, Richard M. Gronostajski, Timothy L. Bailey, Andrew W. Boyd, and Linda J. Richards
- 2940 Binocular Input Coincidence Mediates Critical Period Plasticity in the Mouse Primary Visual Cortex**
Xiao-jing Chen, Malte J. Rasch, Guang Chen, Chang-quan Ye, Si Wu, and Xiao-hui Zhang
- 3067 *Bre1a*, a Histone H2B Ubiquitin Ligase, Regulates the Cell Cycle and Differentiation of Neural Precursor Cells**
Yugo Ishino, Yoshitaka Hayashi, Masae Naruse, Koichi Tomita, Makoto Sanbo, Takahiro Fuchigami, Ryoji Fujiki, Kenzo Hirose, Yayoi Toyooka, Toshihiko Fujimori, Kazuhiro Ikenaka, and Seiji Hitoshi

SYSTEMS/CIRCUITS

- 2774 Premotor Spinal Network with Balanced Excitation and Inhibition during Motor Patterns Has High Resilience to Structural Division**
Peter C. Petersen, Mikkel Vestergaard, Kristian H. R. Jensen, and Rune W. Berg
- 2822 Changes in Cerebral CB₁ Receptor Availability after Acute and Chronic Alcohol Abuse and Monitored Abstinence**
Jenny Ceccarini, Titia Hompes, Anne Verhaeghen, Cindy Casteels, Hendrik Peuskens, Guy Bormans, Stephan Claes, and Koen Van Laere
- 2845 Differential Entrainment and Learning-Related Dynamics of Spike and Local Field Potential Activity in the Sensorimotor and Associative Striatum**
Catherine A. Thorn and Ann M. Graybiel
- 3042 Neural Dynamics Underlying Target Detection in the Human Brain**
Arjun K. Bansal, Radhika Madhavan, Yigal Agam, Alexandra Golby, Joseph R. Madsen, and Gabriel Kreiman
- 3056 The Hippocampal CA2 Ensemble Is Sensitive to Contextual Change**
Marie E. Wintzer, Roman Boehringer, Denis Polygalov, and Thomas J. McHugh
- 3101 Cortical and Thalamic Excitation Mediate the Multiphasic Responses of Striatal Cholinergic Interneurons to Motivationally Salient Stimuli**
Natalie M. Doig, Peter J. Magill, Paul Apicella, J. Paul Bolam, and Andrew Sharott

BEHAVIORAL/COGNITIVE

- 2871 Generalized Role for the Cerebellum in Encoding Internal Models: Evidence from Semantic Processing**
Torgeir Moberget, Eva Hilland Gullesten, Stein Andersson, Richard B. Ivry, and Tor Endestad
- 2898 Mirror Movement-Like Defects in Startle Behavior of Zebrafish *dcc* Mutants Are Caused by Aberrant Midline Guidance of Identified Descending Hindbrain Neurons**
Roshan A. Jain, Hannah Bell, Amy Lim, Chi-Bin Chien, and Michael Granato

- 2931 **Decoupling Interval Timing and Climbing Neural Activity: A Dissociation between CNV and N1P2 Amplitudes**
Tadeusz W. Kononowicz and Hedderik van Rijn
- 2956 **Highly Informative Natural Scene Regions Increase Microsaccade Production during Visual Scanning**
Michael B. McCamy, Jorge Otero-Millan, Leandro Luigi Di Stasi, Stephen L. Macknik, and Susana Martinez-Conde
- 3005 **A Single-Trial Estimation of the Feedback-Related Negativity and Its Relation to BOLD Responses in a Time-Estimation Task**
Michael P. I. Becker, Alexander M. Nitsch, Wolfgang H. R. Miltner, and Thomas Straube
- 3023 **Explicit and Implicit Contributions to Learning in a Sensorimotor Adaptation Task**
Jordan A. Taylor, John W. Krakauer, and Richard B. Ivry
- 3033 **A Map of LTP-Related Synaptic Changes in Dorsal Hippocampus Following Unsupervised Learning**
Conor D. Cox, Christopher S. Rex, Linda C. Palmer, Alex H. Babayan, Danielle T. Pham, Samantha D. Corwin, Brian H. Trieu, Christine M. Gall, and Gary Lynch

NEUROBIOLOGY OF DISEASE

- 2785 **dAcs1, the *Drosophila* Ortholog of Acyl-CoA Synthetase Long-Chain Family Member 3 and 4, Inhibits Synapse Growth by Attenuating Bone Morphogenetic Protein Signaling via Endocytic Recycling**
Zhihua Liu, Yan Huang, Wen Hu, Sheng Huang, Qifu Wang, Junhai Han, and Yong Q. Zhang
- 2797 **Proteomic Survey Reveals Altered Energetic Patterns and Metabolic Failure Prior to Retinal Degeneration**
Ana Griciuc, Michel J. Roux, Juliane Merl, Angela Giangrande, Stefanie M. Hauck, Liviu Aron, and Marius Ueffing
- 2813 **Ubiquilin-1 Protects Cells from Oxidative Stress and Ischemic Stroke Caused Tissue Injury in Mice**
Yanying Liu, Lanhai Lü, Casey L. Hettinger, Gaofeng Dong, Dong Zhang, Khosrow Rezvani, Xuejun Wang, and Hongmin Wang
- 2884 **A Sensitive A β Oligomer Assay Discriminates Alzheimer's and Aged Control Cerebrospinal Fluid**
Mary J. Savage, Juliya Kalinina, Abigail Wolfe, Katherine Tugusheva, Rachel Korn, Tanesha Cash-Mason, Jill W. Maxwell, Nathan G. Hatcher, Sharie J. Haugabook, Guoxin Wu, Bonnie J. Howell, John J. Renger, Paul J. Shughrue, and Alexander McCampbell
- 2967 **N-Acetyl-Serotonin Offers Neuroprotection through Inhibiting Mitochondrial Death Pathways and Autophagic Activation in Experimental Models of Ischemic Injury**
Hua Zhou, Jian Wang, Jiying Jiang, Irina G. Stavrovskaya, Mingchang Li, Wei Li, Qiaofeng Wu, Xinmu Zhang, Chengliang Luo, Shuanhu Zhou, Ana C. Sirianni, Sovan Sarkar, Bruce S. Kristal, Robert M. Friedlander, and Xin Wang
- 3013 **Peripheral Role of Cathepsin S in Th1 Cell-Dependent Transition of Nerve Injury-Induced Acute Pain to a Chronic Pain State**
Xinwen Zhang, Zhou Wu, Yoshinori Hayashi, Ryo Okada, and Hiroshi Nakanishi

3079 **Loss of PINK1 Attenuates HIF-1 α Induction by Preventing 4E-BP1-Dependent Switch in Protein Translation under Hypoxia**
William Lin, Natasha L. Wadlington, Linan Chen, Xiaoxi Zhuang,
James R. Brorson, and Un Jung Kang

Persons interested in becoming members of the Society for Neuroscience should contact the Membership Department, Society for Neuroscience, 1121 14th St., NW, Suite 1010, Washington, DC 20005, phone 202-962-4000.

Instructions for Authors are available at <http://www.jneurosci.org/misc/itoa.shtml>. Authors should refer to these Instructions online for recent changes that are made periodically.

Brief Communications Instructions for Authors are available via Internet (http://www.jneurosci.org/misc/ifa_bc.shtml).

Submissions should be submitted online using the following url: <http://jneurosci.msubmit.net>. Please contact the Central Office, via phone, fax, or e-mail with any questions. Our contact information is as follows: phone, 202-962-4000; fax, 202-962-4945; e-mail, jn@sfn.org.