

Correction

Correction: Saraf-Sinik et al., Motion Makes Sense: An Adaptive Motor-Sensory Strategy Underlies the Perception of Object Location in Rats

In the article “Motion Makes Sense: An Adaptive Motor-Sensory Strategy Underlies the Perception of Object Location in Rats” by Inbar Saraf-Sinik, Eldad Assa, and Ehud Ahissar, which appeared on pages 8777–8789 of the June 10, 2015 issue, several errors were discovered and are corrected below.

- In Figure 8, the following corrections were made: *A*, *p* values truncated at “*p* = 1,” as required when applying a Bonferroni correction; *C*, *H*, and *I*, legends’ abbreviations for the word “Arrangement” rewritten in a consistent format; *G*, the label of *x*-axis aligned to the middle; and *I*, the label of *x*-axis changed from “ $\dot{\theta}_{W,max}$ (deg/s)” to “ $\theta_{W,max}$ (deg/s).”

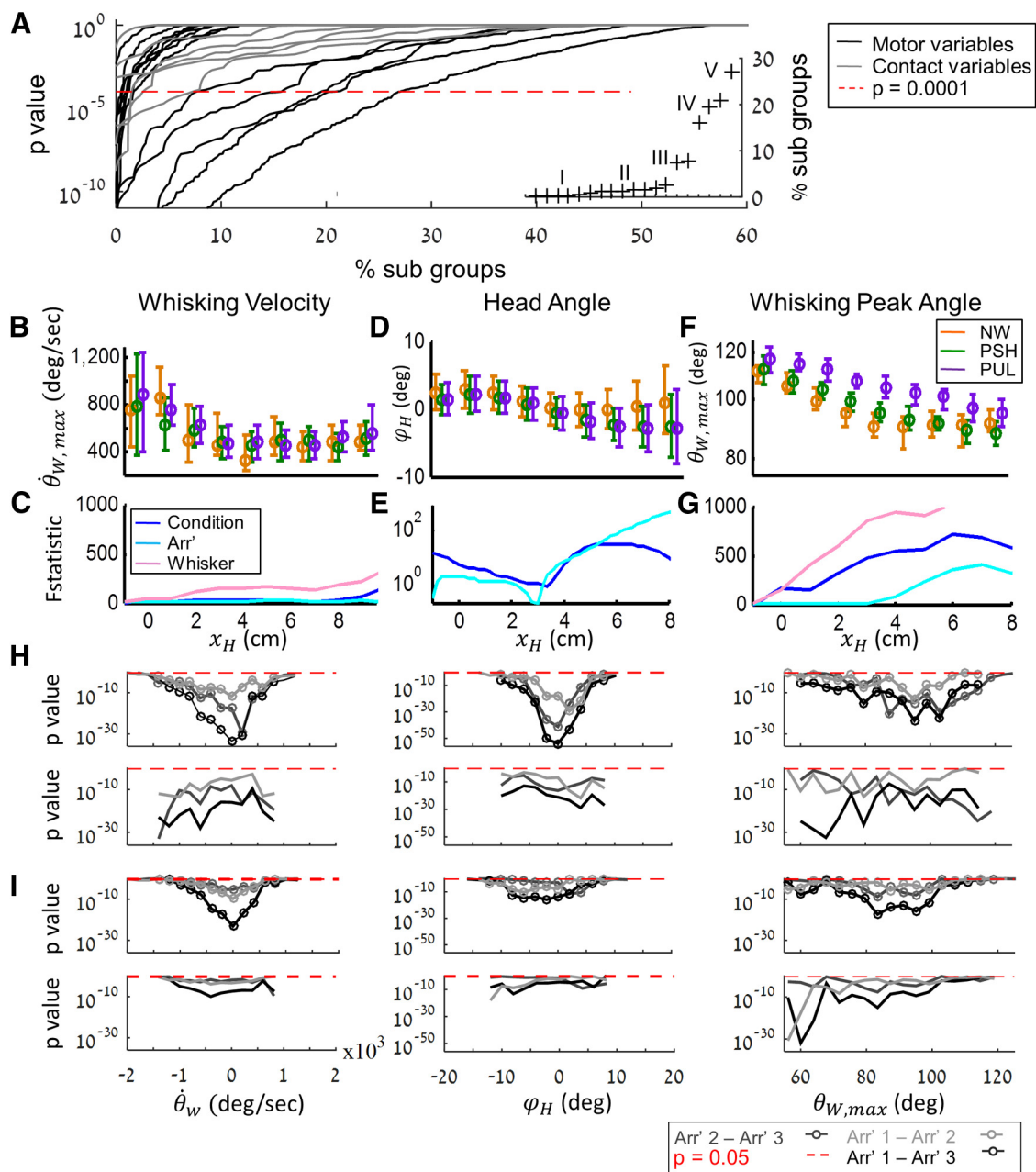


Figure 8.

Table 3. All analyzed variables sorted by invariance^a

Group	Variable	CP	No. of sub groups	Mean samples/sub group	Mean samples/group
I	$T_{W,ret}$	0.10	371	135.94	109.36
	T_{C_S}	0.10	50	36.26	
	r_{C_S}	0.10	33	32.1	
	φ_{H,C_S}	0.10	50	36.26	
II	$T_{W,prt}$	0.60	376	134.51	131.47
	$A_{W,ret}$	0.80	371	135.94	
	$A_{W,prt}$	1.10	376	134.51	
	$\bar{\theta}_{W,ret}$	1.20	371	135.94	
	$\bar{\theta}_{W,prt}$	1.30	376	134.51	
	r_{C_L}	1.60	49	39.2	
	$\dot{\theta}_{W,max}$	1.70	376	134.51	
	$\dot{\theta}_{W,min}$	1.80	371	135.94	
	φ_{H,C_L}	2.70	59	46.29	
	III	T_{C_L}	7.40	59	
\dot{y}_H		7.80	96	151.49	
IV	y_H	15.90	96	151.56	141.26
	$\theta_{W,min}$	19.60	371	135.94	
	\dot{x}_H	20.90	96	151.49	
V	$\theta_{W,max}$	27.10	376	134.51	134.51

^aCP, "crossing point" (Fig. 8A): percentage of subgroups below $p = 0.0001$.

- On p. 8786, in Table 3, the second parameter in group IV: changed from " $\dot{\theta}_{W,min}$ " to " $\theta_{W,min}$." In the footnote, "Figure 5A" changed to "Figure 8A."
- On page 8786, right column, 11 lines from the bottom, Figure 8B changed to Figure 7B. The corrected sentence is: Accordingly, these variables were kept invariant during early localization (Fig. 8B–E), which indeed maintained the coding power of Δt_{onset} (Fig. 7B).

These corrections do not affect the main conclusions and interpretations of the paper. The errors have been corrected on the online PDF version.

DOI:10.1523/JNEUROSCI.3147-15.2015