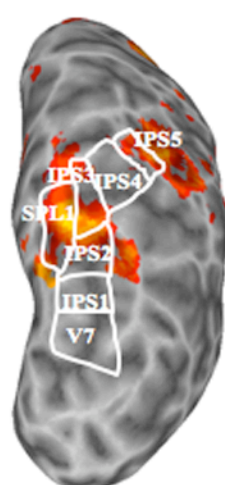
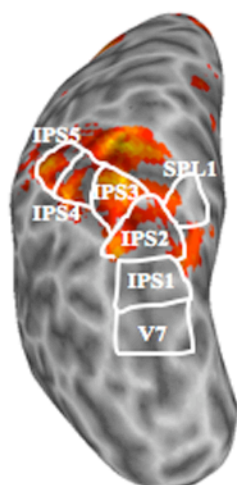
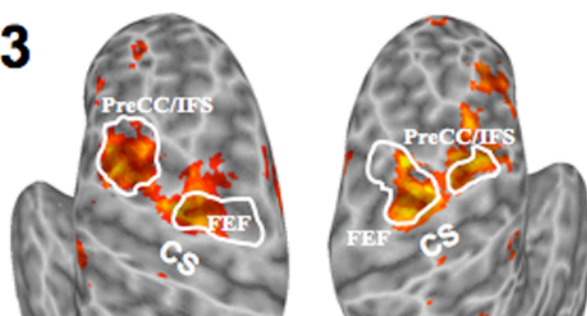
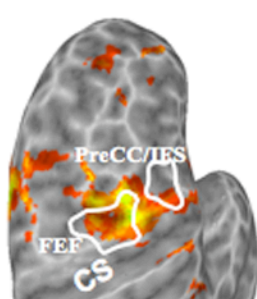
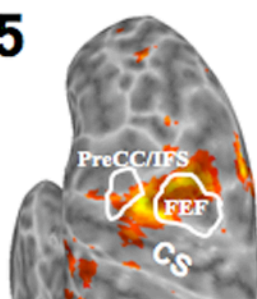
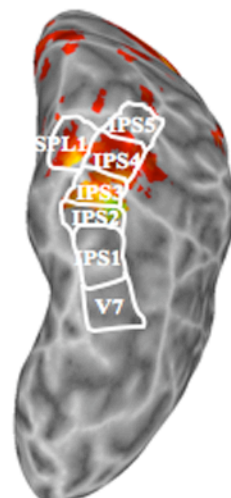
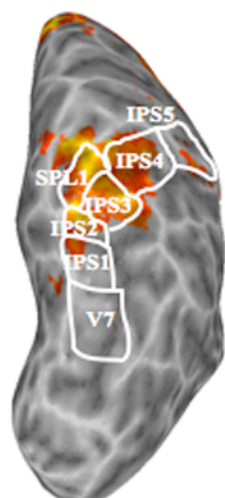
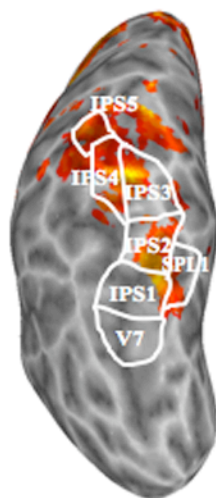
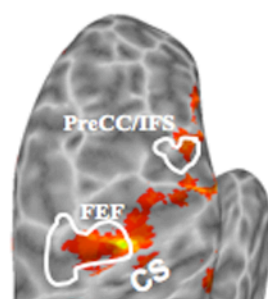
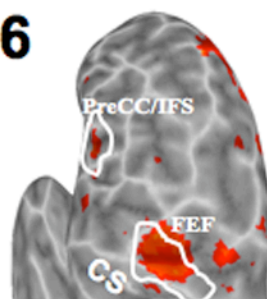


**Supplemental Figure 1**

**S3****S5****S6****L****R****Supplemental Figure 2**

## **SUPPLEMENTAL FIGURE LEGENDS**

**Supplemental Figure 1:** *Fronto-parietal spatial attention network in relation to topographic maps: subjects S1, S4, S7, and S8.* Spatial attention activations in frontal and parietal cortex obtained with the spatial attention task are shown projected onto the inflated surfaces of four subjects. Topographic areas within frontal (FEF, PreCC/IFS) and parietal (IPS1-IPS5, SPL1) cortex are outlined and labeled in white. CS = central sulcus.

**Supplemental Figure 2:** *Fronto-parietal spatial attention network in relation to topographic maps: subjects S3, S5, and S6.* Spatial attention activations in frontal and parietal cortex obtained with the spatial attention task are shown projected onto the inflated surfaces of three additional subjects. Other conventions are as in Supplemental Figure 1.