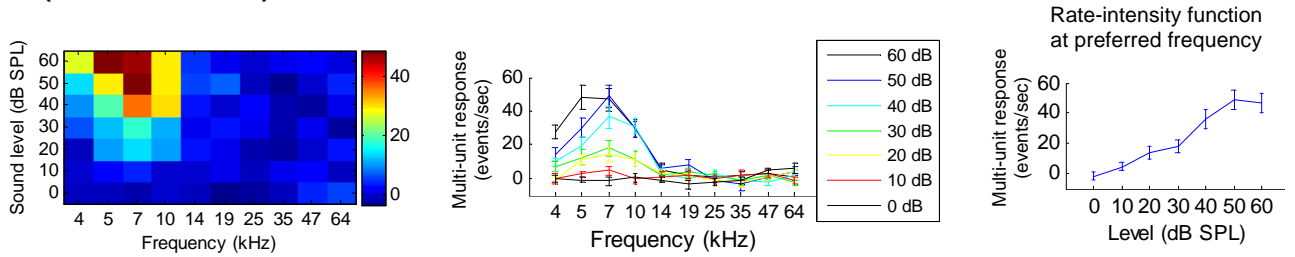
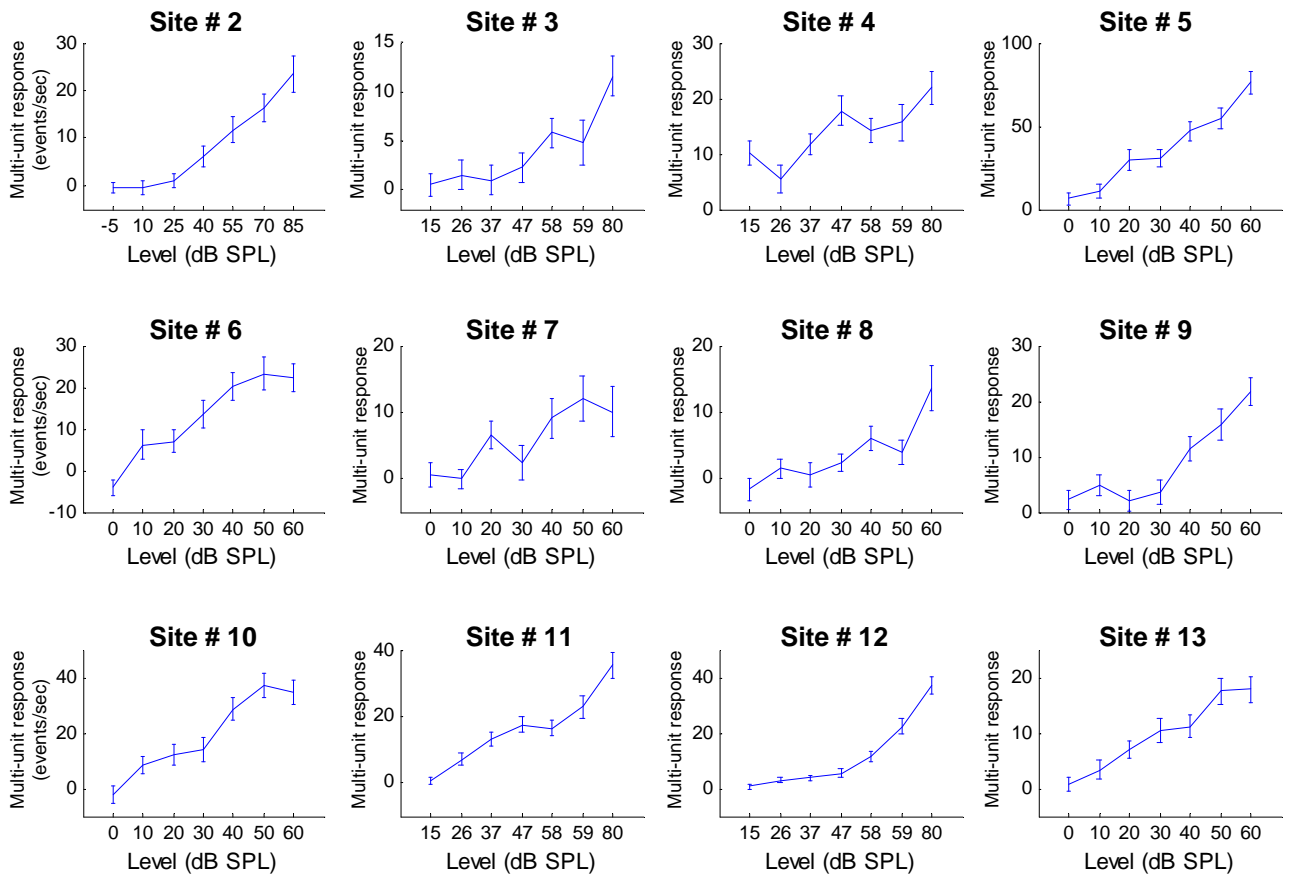


Supplementary Figure 1

A (Multi-unit site #1)



B



Supplementary Figure 1. Rate-intensity functions for the multi-unit sites tested in the intensity oddball paradigm. **A**, (left panel) Frequency-intensity tuning for an example multi-unit site, before it was tested in the intensity oddball paradigm. Responses elicited by each frequency and intensity combination are indicated in color. (middle panel) Frequency-intensity tuning for the same site, replotted numerically. The monotonic nature of the rate-intensity function can be observed at each frequency. (right panel) Rate-intensity function for this site, measured at its characteristic frequency (7 kHz). **B**, For the remaining multi-unit sites measured in the intensity oddball paradigm, the rate-intensity functions measured at their characteristic frequency is plotted.