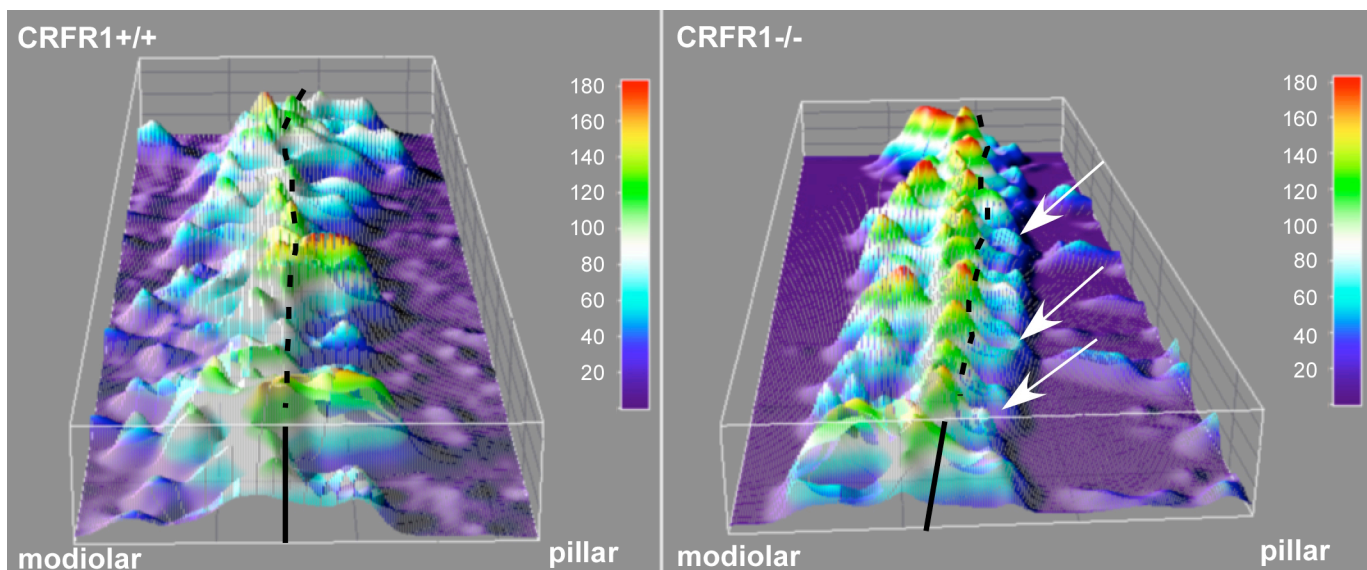


Supplemental figure 1. Quantification of spiral ganglion cell populations in CRFR1<sup>-/-</sup> versus CRFR1<sup>+/+</sup> mice. (A) Tuj1 immunostain (green) labels Type 1 spiral ganglion cells, while peripherin immunostain (red) labels Type 2 spiral ganglion cells. Cochleae were sectioned on a cryostat 10µm thick. (B) Cell counts were based on alternate sections, ten sections from each genotype, 3 mice per genotype. Blue bars represent counts of Type 1 ganglion cells, while red bars represent Type 2 ganglion cells.



Suppl. Fig. 2

Surface plots of NKA immunolabeling of the IHC region were prepared using ImageJ. Regions of high intensity immunofluorescence are found on the pillar side of the IHC region (right of the dashed line) in CRFR1<sup>+/+</sup> mice. However, the same region in CRFR1<sup>-/-</sup> mice (right of the dashed line) is characterized by low levels of fluorescent labeling. Depressions (arrows) in which IHCs reside are more clearly visible in the CRFR1<sup>-/-</sup> mice.