

DNA Methyltransferase Contributes to Delayed Ischemic Brain Injury

Matthias Endres,^{1,2} Andreas Meisel,² Detlev Biniszkiwicz,³ Shobu Namura,¹ Konstantin Prass,² Karsten Ruscher,² Andreas Lipski,² Rudolf Jaenisch,³ Michael A. Moskowitz,¹ and Ulrich Dirnagl²

¹Stroke and Neurovascular Regulation Laboratory, Massachusetts General Hospital, Harvard Medical School, Charlestown, Massachusetts 02129, ²Division of Experimental Neurology, Department of Neurology, Charité Hospital, 10098 Berlin, Germany, and ³Whitehead Institute for Biomedical Research, Massachusetts Institute of Technology, Cambridge, Massachusetts 02142

DNA methylation is important for controlling the profile of gene expression and is catalyzed by DNA methyltransferase (MTase), an enzyme that is abundant in brain. Because significant DNA damage and alterations in gene expression develop as a consequence of cerebral ischemia, we measured MTase activity *in vitro* and DNA methylation *in vivo* after mild focal brain ischemia. After 30 min middle cerebral artery occlusion (MCAo) and reperfusion, MTase catalytic activity and the 190 kDa band on immunoblot did not change over time. However, [³H]methyl-group incorporation into DNA increased significantly in wild-type mice after reperfusion, but not in mutant mice heterozygous for a DNA methyltransferase gene deletion (*Dnmt*^{S/+}). *Dnmt*^{S/+} mice were resistant to mild ischemic damage, sug-

gesting that increased DNA methylation is associated with augmented brain injury after MCA occlusion. Consistent with this formulation, treatment with the MTase inhibitor 5-aza-2'-deoxycytidine and the deacetylation inhibitor trichostatin A conferred stroke protection in wild-type mice. In contrast to mild stroke, however, DNA methylation was not enhanced, and reduced *dnmt* gene expression was not protective in an ischemia model of excitotoxic/necrotic cell death. In conclusion, our results demonstrate that MTase activity contributes to poor tissue outcome after mild ischemic brain injury.

Key words: cerebral ischemia; delayed cell death; DNA damage; DNA methylation; DNA methyltransferase; gene expression

Mammalian DNA methylation is a covalent, postreplicative modification of genomic DNA and has been implicated in development and differentiation (Li et al., 1992; Panning and Jaenisch, 1998), X-chromosome inactivation (Cedar and Razin, 1990), imprinting (Li et al., 1993; Razin and Cedar, 1994; Tucker et al., 1996a,b; Surani, 1998), and cancer (Baylin et al., 1991; Counts and Goodman, 1995; Laird et al., 1995; Jones, 1996). DNA methylation is catalyzed by the maintenance DNA (cytosine-5) methyltransferase enzyme (MTase, EC 2.1.1.37) and S-adenosyl methionine (SAM) as methyl donor (Jones, 1996; Lengauer et al., 1997; Okano et al., 1998). The primary substrates for MTase are CpG dinucleotides, which represent only 1–2% of the total genome, and ~70–80% of all CpG sites are methylated in adult somatic mammalian cells (Cross and Bird, 1995). Generally, DNA methylation represses gene transcription (“gene silencing”), whereas hypomethylation is correlated with active transcription (Ehrlich and Wang, 1981; Adams and Burdon, 1982; Doerfler, 1983; Cedar, 1988; Bestor, 1990; Bird, 1992; Leonhard and Bestor, 1993; Laird and Jaenisch, 1996).

It is not known whether DNA methylation is important in ischemic brain damage, but it may be of particular interest in this

context because (1) MTase activity is unexpectedly high in neurons, implying a neuron-specific function in these nonreplicating cells (Goto et al., 1993; Brooks et al., 1996). (2) Brain ischemia causes DNA damage including G-T mismatches generated by deamination of 5-methyl cytosine (5-MeC), a powerful endogenous mutagen; MTase may therefore remethylate newly incorporated cytosines after DNA repair in brain (Brooks et al., 1996; Liu et al., 1996; MacManus and Linnik, 1997; Cui et al., 1999). In addition, the formation of 8-hydroxyguanine by oxygen radical injury during ischemia/reperfusion may alter methylation of adjacent cytosines (Cerdá and Weitzman, 1997). (3) DNA methylation could alter gene expression, although it has not been determined whether changes in DNA methylation develop after cerebral ischemia.

In this study we examined whether there are significant differences in MTase protein, enzyme activity, and DNA methylation after experimental brain ischemia in mice and determined whether reduced levels of MTase are associated with differences in stroke outcome in transgenic mice heterozygous for a *dnmt1* gene deletion (*Dnmt*^{S/+} mice).

MATERIALS AND METHODS

Transgenic mice. Mice heterozygous for the maintenance DNA methyltransferase gene (*Dnmt*^{S/+}) were generated as described (Li et al., 1992, 1993). *Dnmt*^{S/+} mice are healthy, fertile, and phenotypically normal; *dnmt1* null mice (*Dnmt*^{S/S}) die during embryonic development (Li et al., 1992, 1993). All experiments were performed using littermates (*Dnmt*^{S/+} and *Dnmt*^{+/+}) in a pure 129/SV_{Jac} background.

Mouse model for focal cerebral ischemia. Animal experiments were performed according to National Institutes of Health and institutional guidelines and the policy on the use of animals in neuroscience research of the Society for Neuroscience. Mice (18–22 gm) were anesthetized with

Received Nov. 11, 1999; revised Feb. 22, 2000; accepted Feb. 24, 2000.

This research was supported by Grant NS10828 from National Institutes of Health (M.A.M.), the Deutsche Forschungsgemeinschaft (En343/1-1 to M.E.; En343/4-1 to M.E. and A.M.; Me1562/1-1 to A.M. and U.D.; Di454/8-2 to U.D.), the Humboldt-University of Berlin (M.E.), and the Hermann and Lilly Schilling Stiftung (U.D.). We thank Guoping Fan for assistance in the immunoblot assays.

M.E. and A.M. contributed equally to this work.

Correspondence should be addressed to Dr. Matthias Endres, Department of Neurology, Charité Hospital, Humboldt-University, D-10098 Berlin, Germany. E-mail: matthias.endres@charite.de.

Copyright © 2000 Society for Neuroscience 0270-6474/00/203175-07\$15.00/0

1.5% halothane (induction) and maintained on 1.0% halothane in 70% N₂O and 30% O₂ by face mask. Focal cerebral ischemia was induced as described (Endres et al., 1998b). In brief, MCA occlusion was produced by a silicone-coated 8–0 monofilament into the internal carotid artery. Thirty minutes or 2 hr later, the filament was withdrawn to reperfusion the brain. To insure equivalent levels of ischemia between groups, regional cerebral blood flow (rCBF) was measured by laser Doppler flowmetry using a flexible skull probe (Huang et al., 1994; Endres et al., 1998a). In randomly selected animals the left femoral artery was cannulated for arterial blood pressure and blood gas determination (Huang et al., 1994; Endres et al., 1998a). Arterial blood samples (50 μ l) were analyzed for pH, partial pressure of oxygen (PaO₂) and partial pressure of carbon dioxide (PaCO₂) using a blood gas/pH analyzer (Corning 178, Ciba-Corning Diagnostics, Medford, MA). Core temperature was maintained at $37 \pm 0.5^\circ\text{C}$ with a thermostat (FHC, Brunswick, ME) and a heating lamp during the monitoring period until 1 hr after reperfusion.

Western blotting. MTase protein levels were determined by immunoblots of extracts of olfactory bulb, striatum, and hippocampus in *Dnmt*^{S/+} and *Dnmt*^{+/+} mice. To examine for time-dependent changes in MTase protein, 129/SV_{EvTacBr} wild-type mice (Taconic Farms, Germantown, NY) underwent 30 min MCAo as above followed by reperfusion (1–72 hr) (Endres et al., 1998b). After mice were killed, brains were immediately removed. Ischemic tissue was identified using a dissecting microscope, and ischemic tissue only (mostly striatum) was isolated along with corresponding tissue from the contralateral side, snap-frozen in liquid nitrogen, and stored at -80°C until further use. Proteins were isolated according to standard techniques, separated by a 7% SDS/PAGE gel, and transferred onto a nitrocellulose membrane. Subsequently, blots were incubated with rabbit polyclonal antiserum HM334 (1:2000 dilution) that recognizes the following polypeptide sequence within mouse maintenance DNA methyltransferase: CRSPRSRPKPRGPRRSK (Tucker et al., 1996a). Bound protein was detected by chemiluminescence (ECL, Amersham Pharmacia Biotech, Piscataway, NJ). Coomassie blue staining was performed to insure equivalent levels of protein loading.

MTase catalytic activity assay. Animals underwent 30 min MCAo/perfusion as above. Cortical and striatal tissue from each hemisphere and cerebellum were separated, snap-frozen in liquid nitrogen, and stored at -80°C . Nuclear extracts were analyzed for MTase activity as described (Li et al., 1992). Nuclear extract (5 μ g) was incubated with 20 mM Tris-HCl, pH 7.4, 10 mM EDTA, 10% glycerol, 2 mM DTT, 200 μ M PMSF, 0.5 μ M [³H]-SAM, 15 μ g/ml RNase A, and 50 pmol hemimethylated oligo-probe dnMT1m2 (see below) in a total volume of 50 μ l. The reaction was initiated by addition of nuclear extract and incubated for 1 hr at 37°C . Fifty microliters of 16 μ M SAM were then added, and the [³H]dnMT1m2-probe was extracted with phenol/chloroform. Probes were applied to a positively charged Porablot plus membrane (pore size 0.45 μ m; Macherey-Nagel, Düren, Germany) using a dot blot apparatus and washed three times with 300 μ l sterile H₂O. Membranes were air-dried, and the respective areas were counted in 2 ml nonliquid scintillation solution (OptiPhase “Hi-Safe” II) using a scintillation counter (LKB, EG&G Wallac, Gaithersburg, MD). MTase activity was linear over time and enzyme dependent (data not shown). The oligodeoxynucleotide duplex probe dnMT1m2 was as follows: 5'-GAXGX-GATCXGGTTAAXGAGTCXGATGXGTAG-3', 3'-CTGCGCTAG-GCCAATTGCTCAGGCTACGCATC-5'; X = 5-MeC.

In vivo DNA methylation assay. Two hundred microliters of PBS, pH 7.4, and 200 μ l of [methyl-³H]methionine (200 μ Ci, specific activity 513 mCi/mg; Amersham Life Science, Freiburg, Germany) were continuously infused over 2 hr via PE-10 interarterial catheter after 30 min MCA occlusion. Anesthesia was then stopped, and animals were placed in a cage for an additional 10 hr before they were killed. Cortex, striatum, and cerebellum were removed and prepared as described above and snap-frozen. Total DNA was isolated, phenol-chloroform-extracted, and dissolved in TE. Three micrograms DNA were blotted on positively charged Porablot plus membranes and measured as above. For controls, samples were treated with proteinase K, with RNase A (Life Technologies, Karlsruhe, Germany), or with DNase I (Invitrogen, NV Leek, Netherlands). Before blotting on membrane, DNase I treatment abolished the [³H]-signal, whereas RNase A and Proteinase K treatment were without effect.

Drug administration. Stock solutions were prepared in PBS/100% ethanol/bovine serum albumin (100:10:1) as vehicle. 5-Aza-2'-deoxycytidine (5-aza-dC) (Sigma, St. Louis, MO), an inhibitor of DNA methylation (Laird et al., 1995), was dissolved at a concentration of 10 μ g/ μ l. Trichostatin A (TSA; Sigma), a specific inhibitor of histone

deacetylation (Yoshida et al., 1995), was dissolved at a concentration of 0.1 and 1 μ g/ μ l, respectively. Two microliters of the solution or vehicle were administered intracerebroventricularly (bregma -0.9 mm lateral; -0.1 mm posterior; -3.1 mm deep) 10 min before ischemia using a Hamilton syringe (Fisher Scientific, Pittsburgh, PA) as described (Endres et al., 1998b). All inhibitor experiments were performed in 129/SV wild-type mice.

Determination of lesion size. Animals were killed at 72 hr reperfusion (30 min MCAo) or 24 hr reperfusion (2 hr MCAo), and brains were snap-frozen in isopentane on dry ice for cryostat sectioning. Infarction areas were quantitated with an image analysis system (M4, Imaging Research, St. Catharines, Ontario, Canada) on 20 μ m hematoxylin and eosin (H&E)-stained cryostat sections. Infarction volume was calculated by summing the volumes of each section directly (Huang et al., 1994) or indirectly (only for 2 hr MCAo experiments) using the following formula: contralateral hemisphere (mm³) – undamaged ipsilateral hemisphere (mm³). The difference between direct and indirect infarct volumes reflects brain swelling.

Determination of neuronal survival. The density of viable cells with neuronal appearance was counted within ischemic striatum on coronal H&E-stained sections (20 μ m) at the level of the anterior commissure using an established protocol (Fink et al., 1998).

Data analysis. Experiments (cerebral ischemia, evaluation of infarct size, cell counts) were performed in a blinded fashion. Data are presented as mean \pm SE. Differences between groups were evaluated by paired or unpaired two-tailed Student's *t* test or by ANOVA followed by Scheffé's test (physiology). *p* values of <0.05 were considered statistically significant.

RESULTS

Effects of ischemia on MTase catalytic activity

We determined MTase catalytic activity *ex vivo* using an established model of 30 min MCAo followed by reperfusion (Endres et al., 1998b). As displayed in Figure 1A, cortical and striatal levels in ischemic tissue did not differ from baseline (sham) and contralateral tissues, nor did they change with time (1, 3, 6, 18 hr) during reperfusion. Levels in *Dnmt*^{S/+} mice were $\sim 50\%$ compared with *Dnmt*^{+/+} mice and also did not change over time (1, 3, 6, 18 hr) (Fig. 1B). Activity levels in cerebellum were considerably higher than in other brain regions, which agrees with the literature (Brooks et al., 1996). Hence, MTase, an enzyme with a short protein half life (Szyf, 1994), remains functionally intact after ischemia/reperfusion.

Effects of ischemia on MTase protein levels

MTase protein was measured semiquantitatively using immunoblot analysis of brain lysates probed with rabbit antiserum (Tucker et al., 1996a). A band corresponding to molecular weight 190 kDa was detected on immunoblot. MTase protein levels were $\sim 50\%$ in *Dnmt*^{S/+} mice compared with the wild-type strain in olfactory bulb (OB), striatum (STR), and hippocampus (HIP) (Fig. 2A). To characterize the fate of MTase after brain ischemia, we measured MTase protein after 30 min MCAo/reperfusion. No differences were found over time in ischemic striatum after recirculation of 0, 1, 3, 6, 12, 18, 24, 48, and 72 hr (Fig. 2B). Hence, MTase levels did not change over time after ischemia/reperfusion.

Effects of cerebral ischemia on DNA methylation *in vivo*

To measure newly incorporated methyl groups into DNA during brain ischemia/reperfusion *in vivo*, animals were first subjected to 30 min MCAo, and on reperfusion a labeled methyl-group precursor of SAM (1-[methyl-³H]methionine) was administered. Twelve hours after reperfusion, DNA methylation was significantly higher in ischemic striatum (4.1-fold) and cortex (3.2-fold) compared with the respective contralateral tissues in wild-type mice (*Dnmt*^{+/+} littermates) (Fig. 3A). DNA methylation, how-

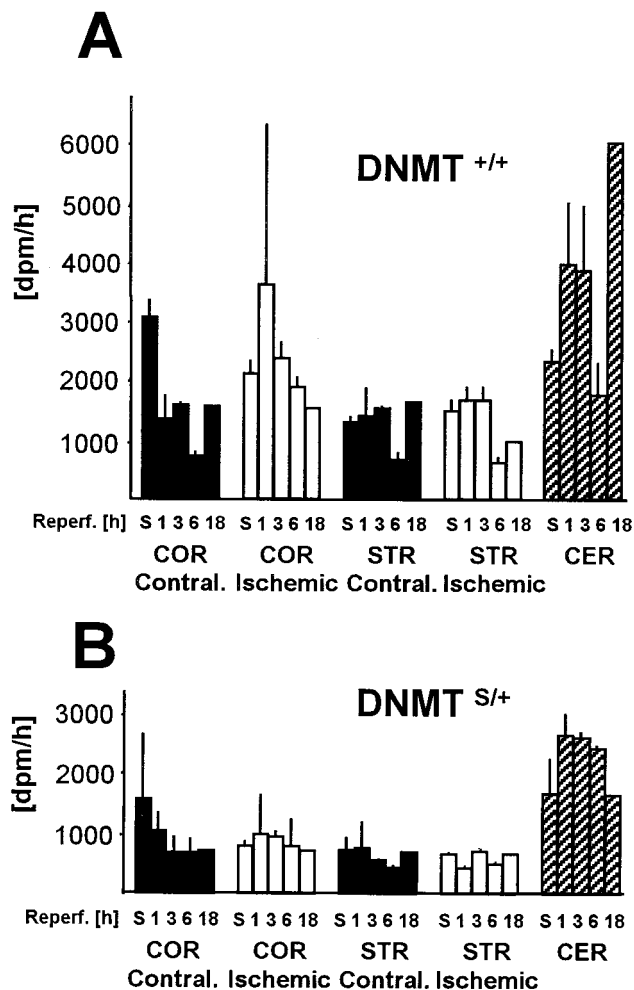


Figure 1. Time-dependent changes of MTase activity in *Dnmt*^{+/+} (A) and *Dnmt*^{S/+} mice (B) after 30 min middle cerebral artery occlusion and reperfusion. MTase activity was measured in ischemic cortex (COR) and striatum (STR) along with the respective contralateral tissue and sham (S)-operated animals. MTase activity was measured in nuclear extracts *in vitro* using a hemimethylated oligo-probe. Levels in cerebellum (CER) are shown for comparison. *n* = 2 animals per time point. Mean \pm SE. *p* > 0.05.

ever, did not increase in ischemic tissue of *Dnmt*^{S/+} mice (Fig. 3B). Together, these results demonstrate that methyl group incorporation increases after ischemia/reperfusion in wild-type but not in *Dnmt*^{S/+} mice.

Smaller cerebral lesions and improved neuronal survival in *Dnmt*^{S/+} mice after mild stroke

To determine whether the failure to increase DNA methylation altered the susceptibility of *Dnmt*^{S/+} mice to tissue injury, we quantitated lesion volume after 30 min MCAo/72 hr reperfusion. In fact, lesion size was significantly (29%) reduced compared with controls (Fig. 4A). Moreover, when neurons were counted within ischemic striatum, the density of viable cells was 2.4-fold higher in the *Dnmt*^{S/+} mice compared with controls (Fig. 4B). These results demonstrate that reduced MTase activity is beneficial during mild cerebral ischemia.

Systemic physiological parameters are unaltered in *Dnmt*^{S/+} mice

Because alterations in systemic and cerebrovascular parameters can modify outcome after stroke, we excluded possible effects of

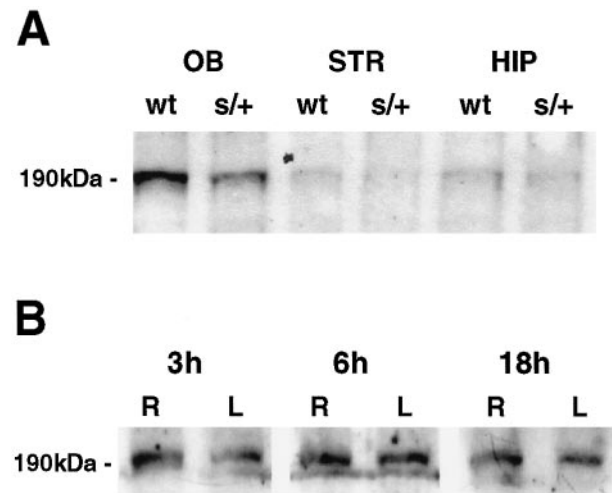


Figure 2. A, MTase protein levels in olfactory bulb (OB), striatum (STR), and hippocampus (HIP) in brain lysates from normal (wt) and *Dnmt*^{S/+} mice (s/+). Brain lysates were subjected to SDS-PAGE and immunoblot analysis performed using a polyclonal MTase antibody. The experiment was repeated three times; a representative experiment is shown. B, Time-dependent changes in MTase protein expression in striatum during reperfusion after 30 min middle cerebral artery occlusion. MTase protein was present in normal brain (sham) and did not change over time (0, 1, 3, 6, 12, 18, 24, 48, and 72 hr) between left (L = ischemic) and right (R = non-ischemic) hemispheres. The experiment was repeated three to four times per time point; a representative experiment for the time points 3, 6, and 18 hr is shown.

such variables by careful physiological monitoring. Rectal temperature, arterial blood pressure, pH, partial pressure of oxygen and carbon dioxide before, during, and after ischemia did not differ between groups (Table 1). rCBF, measured with a laser Doppler flow probe, decreased to <20% of baseline ischemia in all animals and returned to ~100% within 5 min after reperfusion (Table 1). Blood pressure after reperfusion was somewhat lower in *Dnmt*^{S/+} mice compared with controls (82 ± 6 vs 101 ± 5 mmHg) (Table 1). Differences in blood pressure after ischemia between groups could possibly be explained by specific gene expression changes (e.g., of endothelial NO synthase); however, they are unlikely to explain improved outcome in *Dnmt*^{S/+} mice because systemic hypotension normally aggravates ischemic damage (Harms et al., 2000).

Pharmacological inhibition of DNA methylation and histone deacetylation confers stroke protection in wild-type mice

To test the theory that a pharmacological inhibitor of MTase confers stroke protection in wild-type mice, we treated 129/SV mice with the MTase inhibitor 5-aza-dC. Twenty micrograms given intracerebroventricularly 10 min before 30 min MCAo reduced lesion volume by 34% at 72 hr (Fig. 5). After a slightly different ischemia protocol (45 min MCAo followed by 48 hr reperfusion), lesion size was 54% smaller in the 5-aza-dC-treated animals (43.2 ± 12.6 vs 19.9 ± 0.8 mm³ in control vs treated mice, respectively; *p* < 0.001; *n* = 4 per group). We also determined methyl group incorporation into DNA (12 hr reperfusion) in 5-aza-dC-treated animals versus vehicle-injected animals. For this experiment, 400 μ l [methyl-³H]methionine without additional PBS was used. A 2.72-fold increase compared with the contralateral side was found in the ischemic territory of vehicle-injected animals (90 ± 14 vs 244 ± 75 dpm in contralateral vs

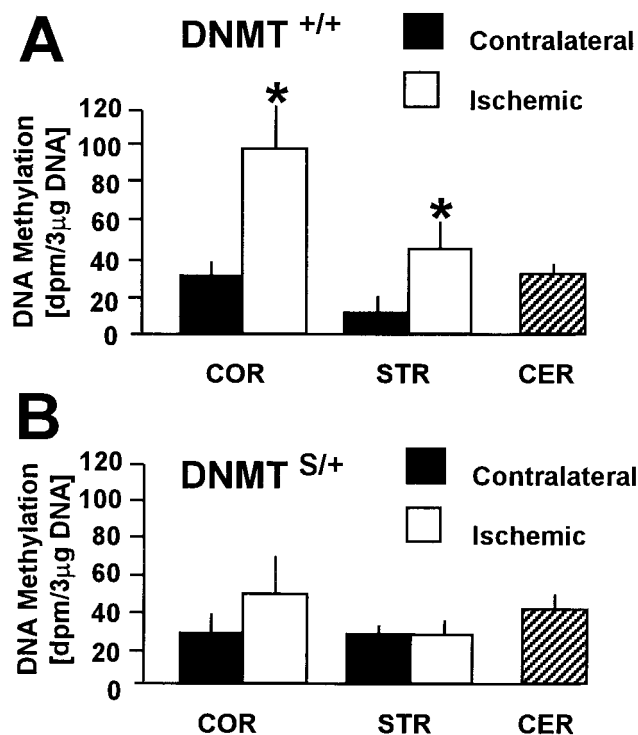


Figure 3. Methyl group incorporation into brain DNA *in vivo* in *Dnmt*^{+/+} (*A*) and *Dnmt*^{S/+} mice (*B*) after 30 min middle cerebral artery occlusion. On reperfusion, L-[methyl-³H]methionine was administered and [³H]methyl group incorporation was measured after 12 hr. DNA methylation was significantly increased in ischemic cortex (COR) and striatum (STR) compared with the contralateral side in *Dnmt*^{+/+} (*A*) but not *Dnmt*^{S/+} mice (*B*). Levels in cerebellum (CER) are shown for comparison. *n* = 4 and 5 animals. Mean ± SE. **p* < 0.05. Paired Student's *t* test.

ischemic tissue, respectively; 3 μg DNA; *n* = 4). However, in 5-aza-dC-treated animals this increase was only 1.38-fold (101 ± 13 vs 140 ± 31 dpm in contralateral vs ischemic tissue, respectively; 3 μg DNA; *n* = 3).

Because deletion/inhibition of MTase may augment the level of gene transcription, we tested whether increasing gene transcription by a related yet distinct mechanism (i.e., inhibition of histone deacetylation) (Yoshida et al., 1995; Eden et al., 1998; Jones et al., 1998; Nan et al., 1998) would also protect from ischemic brain injury. Accordingly, when animals were pretreated with TSA, a

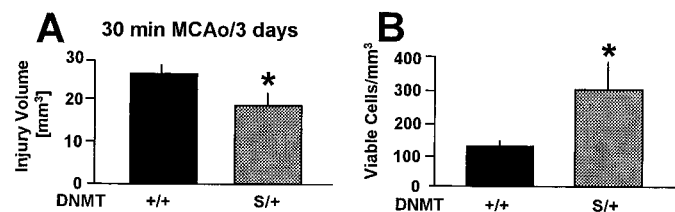


Figure 4. *A*, Infarct volume was 29% smaller in *Dnmt*^{S/+} mice compared with *Dnmt*^{+/+} mice after 30 min filamentous middle cerebral artery occlusion (MCAo) and 72 hr reperfusion. Brain lesion volume was determined on serial coronal hematoxylin and eosin-stained cryostat sections (20 μm). *B*, *Dnmt*^{S/+} mice had significantly higher numbers of viable cells in ischemic striatum after 30 min MCAo/72 hr reperfusion compared with controls. Viable cells with neuronal appearance were counted on coronal sections (20 μm) through the anterior commissure. Mean ± SE. *n* = 14 and 15 animals per group. **p* < 0.05 compared with *Dnmt*^{+/+} mice. Student's *t* test.

Table 1. Physiological variables at baseline and during ischemia in *Dnmt*^{+/+} and *Dnmt*^{S/+} mice

Parameter	<i>Dnmt</i> ^{+/+} mice	<i>Dnmt</i> ^{S/+} mice
MABP (mmHg)		
Baseline	89 ± 3	87 ± 4
During	91 ± 5	88 ± 6
After	101 ± 5	82 ± 6*
pH		
Baseline	7.32 ± 0.01	7.29 ± 0.02
After	7.35 ± 0.01	7.33 ± 0.02
PaO ₂ (mmHg)		
Baseline	164 ± 10	132 ± 21
After	130 ± 13	123 ± 20
PaCO ₂ (mmHg)		
Baseline	43 ± 2	46 ± 3
After	38 ± 1	43 ± 3
rCBF (%)		
Before	100 ± 0	100 ± 0
During	14 ± 5	11 ± 3
After	103 ± 8	100 ± 7
Weight (gm)	21.1 ± 1.0	19.7 ± 0.9
CT (°C)		
During	37.1 ± 0.1	37.1 ± 0.1

Animals were subjected to 30 min filamentous middle cerebral artery occlusion followed by reperfusion (Endres et al., 1998b). MABP (mean arterial blood pressure) and rCBF (regional cerebral blood flow) were measured at baseline, during ischemia, and after 30 min reperfusion (Huang et al., 1994). Fifty microliters of blood were withdrawn twice, before ischemia and directly after reperfusion for blood gas determination (pH, PaO₂, PaCO₂). Animals were weighed before the onset of the experiment (body weight in grams). Core temperature (CT) was controlled and recorded by means of a feedback temperature control unit. **p* < 0.05 vs control; otherwise there were no statistically significant differences between groups. *n* = 5 per group. Mean and SE, ANOVA, and Scheffé's test.

highly specific inhibitor of histone deacetylase (Yoshida et al., 1995) (0.2 or 2 μg, i.c.v., given 10 min before ischemia), lesion size was significantly reduced after 30 min MCAo/72 hr reperfusion (Fig. 5). After 45 min MCAo/48 hr reperfusion, lesion size was 48% smaller in TSA-treated animals (43.2 ± 12.6 vs 22.4 ± 1.2 mm³ in control vs 2 μg TSA, respectively; *p* < 0.001; *n* = 4 per group).

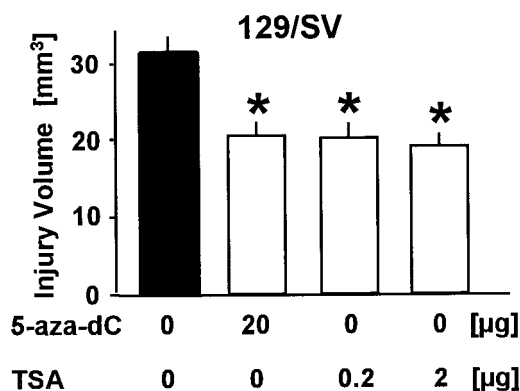


Figure 5. Treatment with the MTase inhibitor 5-aza-2'-deoxycytidine (5-aza-dC; 20 μg) or the specific deacetylation inhibitor trichostatin A (TSA; 1 or 10 μg) reduced lesion size after 30 min of filamentous middle cerebral artery occlusion and 72 hr of reperfusion compared with vehicle in 129/SV mice. Drugs or vehicle was administered intracerebroventricularly 10 min before ischemia onset. Lesion volume was determined quantitatively. Data are presented as mean ± SE. *n* = 5–9 animals per group. **p* < 0.01 versus vehicle. Student's *t* test.

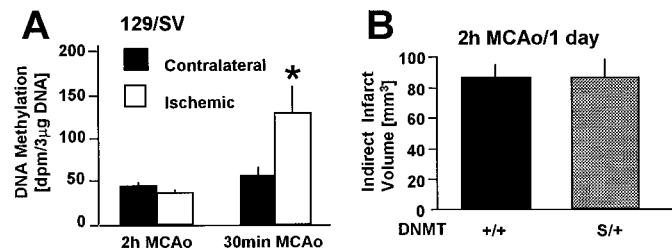


Figure 6. *A*, Methyl group incorporation into brain DNA *in vivo* after 2 hr versus 30 min MCAo in 129/SV mice. On reperfusion L-[methyl-³H]methionine was administered, and [³H]methyl group incorporation into brain DNA was measured after 12 hr reperfusion. Unlike after 30 min MCAo (also see Fig. 3), DNA methylation did not increase in ischemic cortical tissue from the MCA territory compared with the contralateral side after 2 hr MCA occlusion. $n = 5$ (2 hr MCAo) and 4 (30 min MCAo) animals. Mean \pm SE. * $p < 0.05$. Paired Student's *t* test. *B*, When *Dnmt*^{+/+} and *Dnmt*^{S/+} mice were subjected to 2 hr MCAo/24 hr reperfusion and infarct volume was quantitated, no difference in indirect infarct volume was noted between groups. This result was confirmed by a direct method to measure infarct volume (137 ± 19.6 vs 121.7 ± 11.5 mm³ for *Dnmt*^{S/+} vs *Dnmt*^{+/+} mice, respectively). Mean \pm SE. $n = 4$ and 5. $p > 0.05$ compared with wild type. Student's *t* test.

For both the 5-aza-dC and the TSA experiments, we observed no significant differences in physiological parameters between groups (rCBF, blood pressure, blood gases, rectal temperatures) that could influence ischemia outcome ($n = 5$ animals per group; ANOVA plus Scheffe's test; data not shown).

Damage after severe stroke is not blunted in *Dnmt*^{S/+} mice

Excitotoxic and free radical-mediated mechanisms predominate after prolonged periods of ischemia presumably because of necrotic mechanisms of cell death, whereas apoptotic mechanisms are unmasked in milder forms of ischemia (Choi, 1988; Endres et al., 1997, 1998b). We therefore tested the effects of *dnmt1* heterozygosity in a model of severe stroke (2 hr MCAo and reperfusion).

First, we determined whether DNA methylation increases after more prolonged ischemia as it does after mild ischemia (30 min MCAo). Methyl group incorporation was not increased after 2 hr MCAo in wild-type mice (Fig. 6*A*). Moreover, there was no difference in infarct size between *Dnmt*^{S/+} mice and wild-type littermates after 2 hr MCAo and 22 hr reperfusion (121.7 ± 11.5 vs 137.9 ± 19.6 mm³ in controls vs *Dnmt*^{S/+}, respectively; $p > 0.05$; $n = 4$ and 5). There was also no difference between groups when infarct size was corrected for brain swelling (Fig. 6*B*). Regional CBF during ischemia was $<20\%$ of baseline and did not differ between groups (13.8 ± 3.1 vs $18.6 \pm 3.0\%$ in controls vs *Dnmt*^{S/+}, respectively; $p > 0.05$; $n = 4$ and 5). Hence, DNA methylation does not increase after prolonged ischemia, and deletion of one gene copy of *dnmt1* did not confer resistance to severe injury as it did after brief periods of MCAo.

DISCUSSION

This is the first report to implicate DNA methylation in the evolution of ischemic brain injury. Ischemia/reperfusion generated a three- to fourfold increase in methyl group incorporation in brain, whereas this increase was not observed in transgenic animals expressing reduced MTase levels; furthermore, the mutant brain was resistant to injury as evidenced by decreased striatal damage and increased numbers of surviving striatal neu-

rons. There were no group differences in genetic background or differences in physiological or cerebrovascular parameters to explain these results. Together, this may mean that DNA methylation may render the tissue more vulnerable to ischemic injury and may increase as a consequence of such injury. The former postulation is supported by the finding that ischemic brain injury can be reduced by treatment with an inhibitor of DNA methylation, 5-aza-dC.

DNA methylation after cerebral ischemia

An *in vivo* methylation assay was developed to measure newly incorporated methyl groups into DNA using L-[methyl-³H]methionine as methyl donor. [³H]methyl groups became incorporated into DNA, and we expect that most of the incorporated methyl groups was added to cytosine residues, although thymine methylation is a theoretical possibility (Razin et al., 1970). Although there were significant differences in DNA methylation *in vivo* between *Dnmt*^{+/+} and *Dnmt*^{S/+} mice after ischemia, baseline methylation (contralateral hemisphere and cerebellum) did not differ, which agrees with previous findings in *Dnmt*^{S/+} cells (Li et al., 1992, 1993; Laird and Jaenisch, 1996). Absolute numbers for methylation frequency could not be obtained with our assay [assuming that the endogenous SAM pool was completely replaced by [methyl-³H]-SAM and that [³H]methyl groups were incorporated only into CpG dinucleotides, we estimate the striatal methylation frequency as 4.5×10^6 (control) vs 12.2×10^6 (ischemia) per CpG dinucleotide]. Despite significant increases in methyl group incorporation into DNA, protein amount and enzymatic activity of MTase were unchanged after cerebral ischemia and reperfusion, although small differences may have been missed because of assay sensitivity. Possible explanations include induction of other MTases, which seems unlikely, however, in view of the results in *Dnmt*^{S/+} mice. A more reasonable explanation is an increase in MTase substrate, i.e., hemimethylated DNA, the mechanisms of which are discussed below.

Ischemia-induced methylation may reflect MTase activity in neurons after DNA damage and repair. Ischemic stress facilitates deamination of 5'-MeC leading to G-T mismatches. For example, after forebrain ischemia, the mutation spectrum indicates that 58% of mutants with base substitutions (or one-third of all mutations) involved G-T mismatches (Liu et al., 1996). MTase may remethylate cytosine residues after base-excision repair of mismatches (Brooks et al., 1996; Brooks, 1998). Cui et al. (1999) reported specific DNA damage 15 min after focal ischemia (i.e., in the *c-fos* gene), most of which was effectively repaired 60 min after ischemia by base-excision repair. Another important mechanism in this respect is the observation that the formation of oxygen radicals [i.e., 8-hydroxyguanine (oh8dG)] profoundly alters methylation of adjacent cytosines, suggesting a role for oxidative injury in the formation of aberrant DNA methylation patterns (Cerdá and Weitzman, 1997). Interestingly, oh8dG levels increased fourfold after forebrain ischemia (Liu et al., 1996), and we observed a 2.7- to 4.1-fold increase of methylation in a focal model. However, it is unlikely that this mechanism can solely explain methylation changes in our model. Moreover, the recent discovery of a DNA demethylase (Bhattacharya et al., 1999) and the notion that DNA methylation may be a reversible biological phenomenon (Rachmandani et al., 1999) shed new light on DNA methylation in postmitotic cells such as neurons. Notably, our preliminary results indicate that ischemic resistance was also enhanced in genetically engineered mice in which the *dnmt1*

gene was selectively deleted in neurons (M. Endres, G. Fan, and R. Jaenisch, unpublished observation). Alternatively, increased DNA methylation after brain ischemia could relate to mitotic activity and DNA replication in non-neuronal cells such as glia or progenitor cells (Lee et al., 1996).

In addition, administration of 5-aza-dC, an inhibitor of MTase, was able to significantly inhibit DNA methylation when administered intracerebroventricularly before ischemia. Notably, 5-aza-dC, which is known to easily penetrate cells (Chabor et al., 1983), requires incorporation into DNA to inhibit MTase (Laird et al., 1995). In accordance with the above discussed mechanisms for DNA methylation in the adult ischemic brain, 5-aza-dC could be incorporated into DNA of replicating non-neuronal cells or newly repaired DNA of neurons (Brooks et al., 1996; Liu et al., 1996; Brooks, 1998; Cui et al., 1999).

Possible neuroprotective mechanisms

In our study we showed that suppression of DNA methylation conferred resistance to ischemia as well as specific inhibition of histone deacetylation. An inhibitor of DNA methylation, 5-aza-dC, caused significant reduction in ischemic injury as did a deficiency in *dnmt1* gene expression. In addition to methylation, histone deacetylation has also been linked to gene silencing and provides a second global mechanism by which genes are regulated (Yoshida et al., 1995; Eden et al., 1998; Jones et al., 1998; Nan et al., 1998). In fact, the two mechanisms have themselves been linked recently by data showing that transcriptional repression by the methyl-CpG-binding protein MeCP2 involves a histone deacetylase complex (Eden et al., 1998; Jones et al., 1998; Nan et al., 1998). We infer from our data that DNA methylation and histone deacetylation alter gene expression after ischemia in such a way as to render tissue susceptible to injury. According to a “good versus bad gene” theory, this could relate to overexpression of protective/antiapoptotic genes (e.g., *c-fos*, *bcl-2*, *sod*) or repression of deleterious/proapoptotic genes (e.g., *bad*, *bax*). Cui et al. (1999) recently reported specific alterations in gene expression of *c-fos* after focal ischemia/reperfusion. Hence, neuroprotection may relate not only to the specific characteristics of delayed neuronal cell death after mild stroke but to ischemia-induced changes in gene expression mediated by DNA methylation and histone deacetylation. To further differentiate between possible necrotic and apoptotic mechanisms, we used two different models of cerebral ischemia (30 min vs 2 hr MCAo) (Endres et al., 1998b). The fact that methyl group incorporation did not increase after 2 hr MCAo and mutants partially deficient in MTase were not protected from severe stroke points to fundamental differences in the pathways of mild versus severe ischemic injury.

Experiments using *Dnmt*^{S/+} mice cannot distinguish between effects of *dnmt1* heterozygosity during development versus effects in the adult brain. However, the fact that methylation patterns are similar between *Dnmt*^{S/+} and *Dnmt*^{+/+} cells (Li et al., 1992, 1993; Laird and Jaenisch, 1996) and that inhibiting MTase activity with 5-aza-dC was neuroprotective during ischemia suggests that effects in adult brain are responsible for protection. Experiments using conditional knockouts will help to resolve this issue.

In addition to the above epigenetic mechanisms, the enzyme MTase could enhance DNA mutagenesis. Under certain conditions, especially during SAM deficiency, C-T and C-U transitions can be facilitated by MTase directly (Wyszynski et al., 1994; Gonzalgo and Jones, 1997). Possibly, the mutagenic potency of MTase is compensated for by an effective DNA repair mechanism. This would imply a protective role for mismatch repair

versus deleterious effects of MTase and DNA methylation. Therefore, although this mechanism has yet to be convincingly demonstrated in mammals, a direct genetic mechanism by which MTase contributes to ischemic damage is possible. Notably, SAM administration is neuroprotective in models of cerebral ischemia in rats and gerbils (Sato et al., 1988; Rao et al., 1997). It will be interesting to measure SAM levels after cerebral ischemia and conditions of MTase deficiency in our model.

In conclusion, we demonstrate that DNA methylation increases *in vivo* after ischemia/reperfusion and that reduced levels of MTase in brain protect from ischemic injury. These observations underscore the potential importance of DNA methylation to mechanisms of injury and repair in the postischemic brain.

REFERENCES

- Adams RL, Burdon RH (1982) DNA methylation in eukaryotes. *CRC Crit Rev Biochem* 13:349–384.
- Baylin SB, Makos M, Wu JJ, Yen RW, de Bustros A, Vertino P, Nelkin BD (1991) Abnormal patterns of DNA methylation in human neoplasia: potential consequences for tumor progression. *Cancer Cells* 3:383–390.
- Bestor TH (1990) DNA methylation: evolution of a bacterial immune function into a regulator of gene expression and genome structure in higher eukaryotes. *Philos Trans R Soc Lond B Biol Sci* 326:179–187.
- Bhattacharya SK, Rachmandani S, Cervoni N, Szyf M (1999) A mammalian protein with specific demethylase activity for mCpG DNA. *Nature* 397:579–583.
- Bird A (1992) The essentials of DNA methylation. *Cell* 70:5–8.
- Brooks PJ (1998) Detection of excision nuclease in cell-free extracts from the adult mammalian brain. *Mutat Res* 408:37–46.
- Brooks PJ, Marietta C, Goldman D (1996) DNA mismatch repair and DNA methylation in adult brain neurons. *J Neurosci* 16:939–945.
- Cedar H (1988) DNA methylation and gene activity. *Cell* 54:5503–5513.
- Cedar H, Razin A (1990) DNA methylation and development. *Biochim Biophys Acta* 1094:1–8.
- Cerda S, Weitzman SA (1997) Influence of oxygen radical injury on DNA methylation. *Mutat Res* 386:141–152.
- Chabor GG, Rivard GE, Momparker RL (1983) Plasma and cerebrospinal fluid pharmacokinetics of 5-aza-2'-deoxycytidine in rabbits and dogs. *Cancer Res* 43:592–597.
- Choi DW (1988) Glutamate neurotoxicity and diseases of the nervous system. *Neuron* 1:623–634.
- Counts JL, Goodman KI (1995) Alteration in DNA methylation may play a variety of roles in carcinogenesis. *Cell* 83:13–15.
- Cross SH, Bird AP (1995) CpG islands and genes. *Curr Opin Genet Dev* 5:309–314.
- Cui J, Holmes EH, Liu PK (1999) Oxidative damage to the *c-fos* gene and reduction of its transcription after focal cerebral ischemia. *J Neurochem* 73:1164–1174.
- Doerfler W (1983) DNA methylation and gene activity. *Annu Rev Biochem* 52:93–124.
- Eden S, Hashimshony T, Keshet I, Cedar H, Thorne AW (1998) DNA methylation models histone acetylation. *Nature* 394:842.
- Ehrlich M, Wang R-Y (1981) 5-Methylcytosine in eukaryotic DNA. *Science* 212:1350–1357.
- Endres M, Wang Z-Q, Namura S, Waerber C, Moskowitz MA (1997) Ischemic brain injury is mediated by activation of poly(ADP-ribose)polymerase. *J Cereb Blood Flow Metab* 17:1143–1151.
- Endres M, Laufs U, Huang Z, Nakamura T, Huang PL, Moskowitz MA, Liao JK (1998a) Stroke protective effects of HMG-CoA reductase inhibitors mediated by upregulation of endothelial nitric oxide synthase. *Proc Natl Acad Sci USA* 95:1880–1885.
- Endres M, Namura S, Shimizu-Sasamata M, Waerber C, Zhang L, Gomez-Isla T, Hyman BT, Moskowitz MA (1998b) Attenuation of delayed neuronal death after mild focal cerebral ischemia by inhibitors of the caspase family. *J Cereb Blood Flow Metab* 18:238–247.
- Fink K, Zhu J, Namura S, Shimizu-Sasamata M, Endres M, Ma J, Yuan J, Moskowitz MA (1998) Prolonged therapeutic window for ischemic brain damage due to delayed caspase-3 activation. *J Cereb Blood Flow Metab* 18:1071–1076.
- Gonzalgo ML, Jones PA (1997) Mutagenic and epigenetic effects of DNA methylation. *Mutat Res* 386:107–118.

- Goto K, Numatas M, Momuram J-I, Ono T, Bestor T, Kondo H (1993) Expression of DNA methyltransferase gene in mature and immature neurons as well as proliferating cells in mice. *Differentiation* 56:39–44.
- Harms H, Wiegand F, Megow D, Prass K, Einhupl KM, Dirnagl U (2000) Acute treatment of hypertension increases infarct sizes in spontaneously hypertensive rats. *NeuroReport* 11:355–359.
- Huang Z, Huang PL, Panahian N, Dalkara T, Fishman MC, Moskowitz MA (1994) Effects of cerebral ischemia in mice deficient in neuronal nitric oxide synthase. *Science* 265:1883–1885.
- Jones PA (1996) DNA methylation errors and cancer. *Cancer Res* 56:2463–2467.
- Jones PL, Veenstra GJ, Wade PA, Vermaak D, Kass SU, Landsberger N, Strouboulis J, Wolffe AP (1998) Methylated DNA and MeCP2 recruit histone deacetylase to repress transcription. *Nat Genet* 19:187–191.
- Laird PW, Jaenisch R (1996) The role of DNA methylation in cancer genetics and epigenetics. *Annu Rev Genet* 30:441–464.
- Laird PW, Jackson-Grusby L, Fazeli A, Dickinson SL, Jung WE, Weinberg RA, Jaenisch R (1995) Suppression of intestinal neoplasia by DNA hypomethylation. *Cell* 81:197–205.
- Lee PJ, Wahser LL, Law DJ, Boland CR, Horon IL, Feinberg AP (1996) Limited up-regulation of DNA methyltransferase in human colon cancer reflecting increased cell proliferation. *Proc Natl Acad Sci USA* 93:10366–10370.
- Lengauer C, Kinzler KW, Vogelstein B (1997) DNA methylation and genetic instability in colorectal cancer cells. *Proc Natl Acad Sci USA* 94:2545–2550.
- Leonhard H, Bestor TH (1993) Structure, function, and regulation of mammalian DNA methyltransferase. In: *DNA methylation: molecular biology and biological significance* (Jost JP, Saluz HP, eds), pp 109–119. Basel: Birkhauser Verlag.
- Li E, Bestor T, Jaenisch R (1992) Targeted mutation of the DNA methyltransferase gene results in embryonic lethality. *Cell* 69:915–926.
- Li E, Beard C, Jaenisch R (1993) Role for DNA methylation in genomic imprinting. *Nature* 366:362–365.
- Liu PK, Hsu CY, Dizdaroglu M, Floyd RA, Kow YW, Karakaya A, Rabow LE, Cui J-K (1996) Damage, repair, and mutagenesis in nuclear genes after mouse forebrain ischemia-reperfusion. *J Neurosci* 16:6795–6806.
- MacManus JP, Linnik MD (1997) Gene expression induced by cerebral ischemia: an apoptotic perspective. *J Cereb Blood Flow Metab* 17:815–832.
- Nan X, Ng H-H, Johnson CA, Laherty CD, Turner BT, Eisenmann RN, Bird A (1998) Transcriptional repression by the methyl-CpG-binding protein MeCP2 involves a histone deacetylase complex. *Nature* 393:386–389.
- Okano M, Xie S, Li E (1998) Cloning and characterization of a family of novel mammalian DNA (cytosine-5) methyltransferase. *Nat Genet* 19:219–220.
- Panning B, Jaenisch R (1998) RNA and the epigenetic regulation of X chromosome inactivation. *Cell* 93:305–308.
- Rachmandani S, Bhattacharya SK, Cervoni N, Szyf M (1999) DNA methylation is a reversible biological phenomenon. *Proc Natl Acad Sci USA* 96:6107–6112.
- Rao AM, Bařkaya MK, Maley ME, Kindy MS, Dempsey RJ (1997) Beneficial effects of S-adenosyl-L-methionine on blood-brain barrier breakdown and neuronal survival after transient cerebral ischemia in gerbils. *Mol Brain Res* 44:134–138.
- Razin A, Cedar H (1994) DNA methylation and genomic imprinting. *Cell* 77:473–476.
- Razin A, Sedat JW, Sinsheimer RL (1970) Structure of the DNA of bacteriophage Φ X174. *J Mol Biol* 53:251–259.
- Sato H, Hariyama H, Moriguchi K (1988) S-adenosyl-L-methionine protects the hippocampal CA1 neurons from the ischemic neuronal death in rat. *Biochem Biophys Res Commun* 150:491–496.
- Surani MA (1998) Imprinting and the initiation of gene silencing in the germ line. *Cell* 93:309–312.
- Szyf M (1994) DNA methylation properties: consequences for pharmacology. *Trends Pharmacol Sci* 15:233–238.
- Tucker KL, Talbot D, Lee MA, Leonhardt H, Jaenisch R (1996a) Complementation of methylation deficiency in embryonic stem cells by a DNA methyltransferase minigene. *Proc Natl Acad Sci USA* 93:12920–12925.
- Tucker KL, Beard C, Dausman J, Jackson-Grusby L, Laird PW, Lei H, Li E, Jaenisch R (1996b) Germ-line passage is required for establishment of methylation patterns of imprinted but not of nonimprinted genes. *Genes Dev* 10:1008–1020.
- Wyszynski M, Gabbara S, Bhagwat AS (1994) Cytosine deaminations catalyzed by DNA cytosine methyltransferases are unlikely to be the major cause of mutational hot spots at sites of cytosine methylation in *Escherichia coli*. *Proc Natl Acad Sci USA* 91:1574–1578.
- Yoshida M, Horinouchi S, Beppu T (1995) Trichostatin A and trapoxin: novel chemical probes for the role of histone acetylation in chromatin structure and function. *Bioassays* 17:423–443.