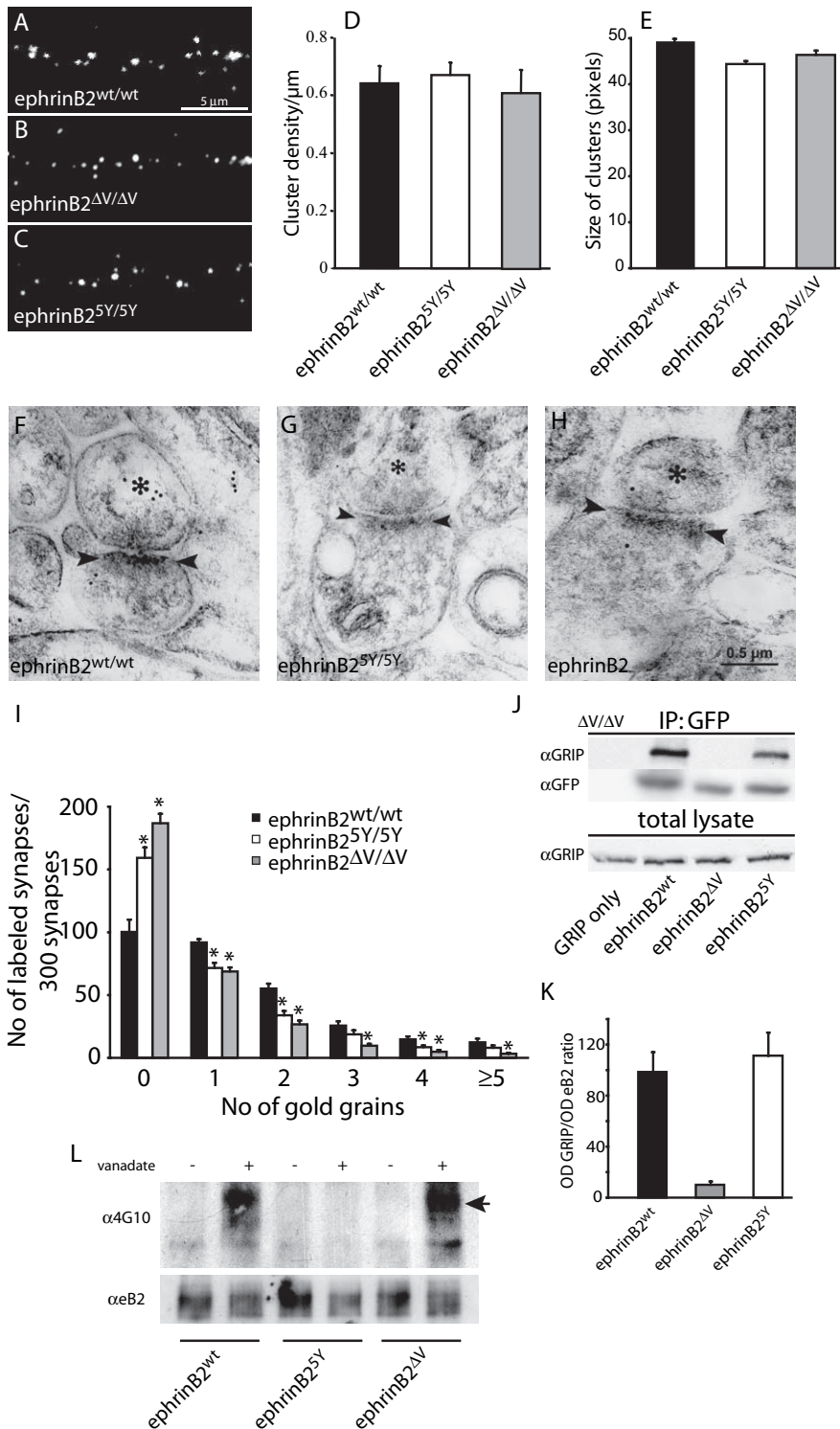


# Erratum

In the article “Tyrosine Phosphorylation Sites in ephrinB2 Are Required for Hippocampal Long-Term Potentiation But Not Long-Term Depression” by Farima Bouzioukh, George A. Wilkinson, Giselin Adelmann, Michael Frotscher, Valentin Stein, and Rüdiger Klein, which appeared on pages 11279–11288 of the October 17, 2007 issue, Figure 1 was incorrect. Panel *H* was missing an important label. The correct Figure 1 is printed here.



In the article “Tyrosine Phosphorylation Sites in ephrinB2 Are Required for Hippocampal Long-Term Potentiation But Not Long-Term Depression” by Farima Bouzioukh, George A. Wilkinson, Giselinde Adelman, Michael Frotscher, Valentin Stein, and Rüdiger Klein, which appeared on pages 11279–11288 of the October 17, 2007 issue, Figure 5 was incorrect. The correct Figure 5, printed here, now displays the correct LTP traces induced by TBS. This correction does not change the conclusion of the figure, nor does it change any other conclusion of the study.

