

NEUROSCIENCE  
**2011**

# SEE YOU IN Washington, DC!

November 12–16, 2011



SfN  
SOCIETY FOR NEUROSCIENCE

# Lambda XL

## Extended Life Light Source



The Lambda XL is a broad spectrum, highly stable light source ( $\pm 1\%$  peak-to-peak fluctuations) with an expected lamp life of 10,000 hours. The light intensity can be adjusted to different levels of attenuation and the liquid light guide connection assures output uniformity in the field of view.

### FEATURES

- 10,000 hour expected life
- Highly stable
- No high-voltage pulse
- No alignment necessary
- Built-in driver for optional filter wheel and shutter
- Adaptable to most microscopes

**SUTTER INSTRUMENT**

PHONE: 415.883.0128 | FAX: 415.883.0572 | EMAIL: [INFO@SUTTER.COM](mailto:INFO@SUTTER.COM) | [WWW.SUTTER.COM](http://WWW.SUTTER.COM)

Join the  
Society for Neuroscience

## Are you an SfN member?

Join now and save on annual meeting registration. You'll also enjoy these member-only benefits:

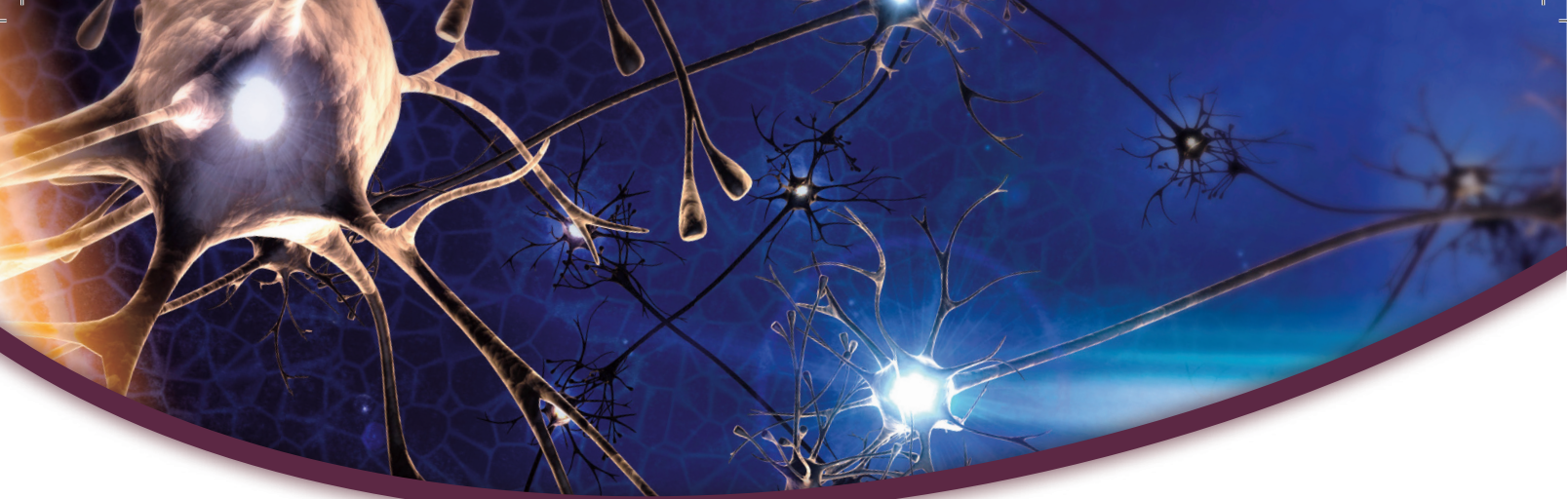
- Abstract submission — only SfN members can submit abstracts for the annual meeting
- Lower registration rates and more housing choices for the annual meeting
- *The Journal of Neuroscience* — access *The Journal* online and receive a discounted subscription on the print version
- Free essential color charges for *The Journal of Neuroscience* manuscripts, when first and last authors are members
- Free online access to the *European Journal of Neuroscience*
- Premium services on NeuroJobs, SfN's online career resource
- Member newsletters, including *Neuroscience Quarterly* and *Nexus*

If you are not a member or let your membership lapse, there's never been a better time to join or renew. Visit [www.sfn.org/joinnow](http://www.sfn.org/joinnow) and start receiving your member benefits today.

[www.sfn.org/joinnow](http://www.sfn.org/joinnow)







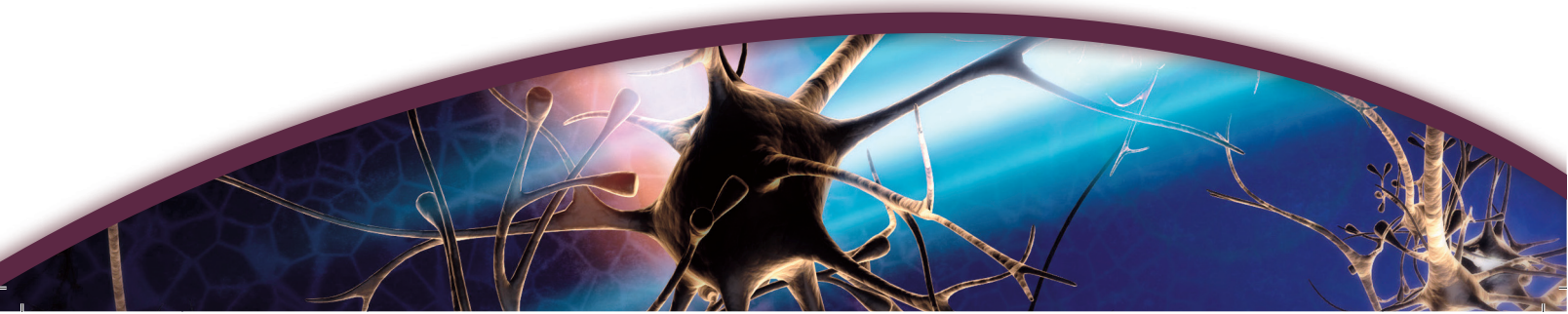
# GIVE TO THE FRIENDS OF SfN FUND

Give back by supporting the next generation  
of neuroscientists through travel awards and  
other career development initiatives.

To make a tax-deductible donation, simply mail a check payable  
to the Society for Neuroscience and note *Friends of SfN*  
in the memo line of your check. Gifts should be mailed to:

Society for Neuroscience  
c/o Friends of SfN  
1121 14th Street, NW Suite 1010  
Washington, DC 20005

To inquire about specific initiatives you can help to support, visit [www.sfn.org/supportsfn](http://www.sfn.org/supportsfn) or e-mail: [crush@sfn.org](mailto:crush@sfn.org).



# NeuroJobs:

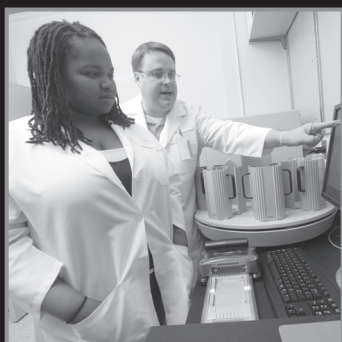
Now free to use!

[www.neurojobs.sfn.org](http://www.neurojobs.sfn.org)

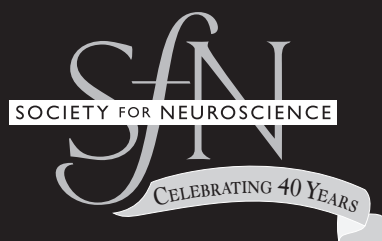
NeuroJobs, the premier online neuroscience career center, is now free to search job listings.

SfN members enjoy premium services that include resume posting and job alert e-mail notices.

For your next career search, visit NeuroJobs first!



# NeuroJobs





# Are you only scratching the surface?



BioDAQ 16 cage food and water intake monitoring system

If you are using any other method for ad libitum food intake measurements you are only scratching the surface. The BioDAQ Food & Water Intake Monitor records the native *episodic* intake behavior of rats and mice at very high resolution in their home cage. Discover the time and date of the initiation of feeding and drinking behavior, how much was consumed, and the period of the feeding or drinking activity.

Discover what's under the surface ... visit [www.researchdiets.com](http://www.researchdiets.com)

**BioDAQ<sup>®</sup>**  
A product of Research Diets, Inc.

  
[biodaq@researchdiets.com](mailto:biodaq@researchdiets.com)