

# Are you only scratching the surface?



BioDAQ 16 cage food and water intake monitoring system

If you are using any other method for ad libitum food intake measurements you are only scratching the surface. The BioDAQ Food & Water Intake Monitor records the native *episodic* intake behavior of rats and mice at very high resolution in their home cage. Discover the time and date of the initiation of feeding and drinking behavior, how much was consumed, and the period of the feeding or drinking activity.

Discover what's under the surface ... visit [www.researchdiets.com](http://www.researchdiets.com)

**BioDAQ**<sup>®</sup>  
A product of Research Diets, Inc.

  
[biodaq@researchdiets.com](mailto:biodaq@researchdiets.com)



## \*TRAINING PROGRAM IN NEUROBEHAVIORAL GENETICS AT UCLA\*

### NINDS-POSTDOCTORAL TRAINING PROGRAM IN NEUROBEHAVIORAL GENETICS

We encourage applications for appointment before June 30<sup>th</sup>, 2012. Candidates will be selected mainly on the basis of prior research accomplishments and academic promise. We particularly seek qualified minority candidates from underrepresented racial and ethnic groups; individuals with disabilities; and individuals from economically, socially, culturally, or educationally disadvantaged backgrounds. In keeping with the program's goals, preference will be given to applicants who are trained in psychiatry, neurology, psychology or human genetics, although we also seek outstanding applicants with other backgrounds. For more information about the program see <http://www.semel.ucla.edu/neurogenetics>

**Applications should include the following:** 1) Complete CV; 2) A 1 page personal statement from the candidate indicating why he/she is interested in this training program, and listing potential mentors. 4) Two letters of recommendation. The application may include as appendices up to 3 published or submitted manuscripts as well as any grant proposals written by the candidate.

Applicants MUST be U.S citizen or permanent residents of the U.S.

*To apply, please send applications to:*

Maribel Estrada, Training Programs Administrator  
Center for Neurobehavioral Genetics  
695 Charles E. Young Drive South, Room 3506  
Los Angeles, CA 90095-1761  
[maribelestrada@mednet.ucla.edu](mailto:maribelestrada@mednet.ucla.edu)



### National Institute of Mental Health Division of Intramural Research Programs Assistant Clinical Investigator



The Division of Intramural Research, National Institute of Mental Health (NIMH), National Institutes of Health (NIH), Department of Health and Human Services (DHHS), seeks applications for Assistant Clinical Investigator using neuroimaging techniques to assess the causes and course of cognitive impairment associated with HIV infection of the brain. The NIMH Assistant Clinical Investigator provides an opportunity for physicians to gain clinical and translational research experience in the NIMH Division of Intramural Research Program (DIRP). The position has limited independent resources and is targeted to physician investigators who have completed specialty training but not yet received independent NIH funding. The position represents an opportunity to gain progressive training leading to scientific independence in a mentored environment anticipating the investigator will become competitive for clinical tenure-track positions. The strong scientific environment and outstanding resources at NIMH make this a unique opportunity for a high-achieving clinical scientist. The position also offers unparalleled opportunities for interdisciplinary collaboration with scientists throughout the NIH.

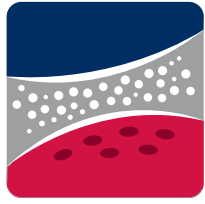
Applicants should have: 1) an M.D. or M.D./ Ph.D. degree and be board eligible or board certified in psychiatry, neurology, nuclear medicine, or radiology; 2) at least three years of experience in clinical research; 3) training in PET and/or MRI imaging; 4) a growing body of publications in this field; and 5) strong interest to work with a multidisciplinary team to investigate the neuropsychological effects of HIV infection.

Salary is commensurate with experience and accomplishments, and a full Civil Service package of benefits (including retirement, health, life, and long-term care insurance, as well as a Thrift Savings Plan, etc.) is available. NIMH is a major research component of the National Institutes of Health and the Department of Health and Human Services, which have nationwide responsibility for improving the health and well-being of all Americans. Interested applicants should send curriculum vitae, bibliography, statement of research interests, accomplishments, and goals, together with six letters of reference via email to: Dr. Maryland Pao, Chair, Search Committee Assistant Clinical Investigator, NIMH, e-mail [NIMHACISearch@mail.nih.gov](mailto:NIMHACISearch@mail.nih.gov). Review of applications will begin on **September 1, 2011**, but applications will continue to be accepted and considered until the position is filled.

Applications from women, minorities, and persons with disabilities are strongly encouraged.



DHHS and NIH are Equal Opportunity Employers



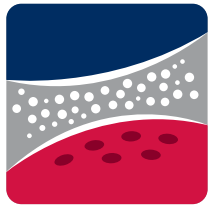
NEUROSCIENCE  
**2011**

# SEE YOU IN Washington, DC!

November 12–16, 2011



SFN  
SOCIETY FOR NEUROSCIENCE

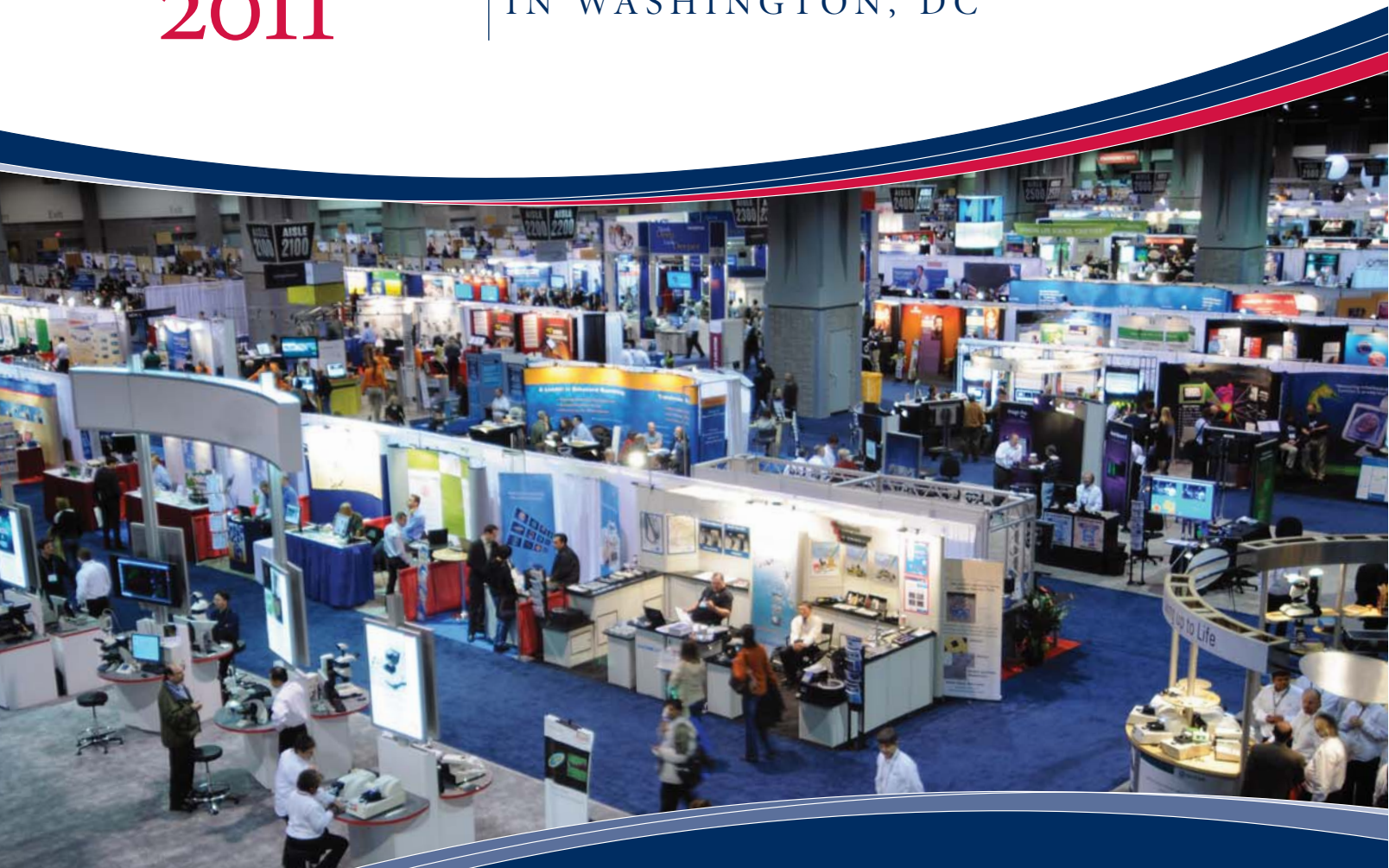


NEUROSCIENCE  
2011

EXHIBIT AT THE

# NEUROJOBS JOB FAIR

IN WASHINGTON, DC



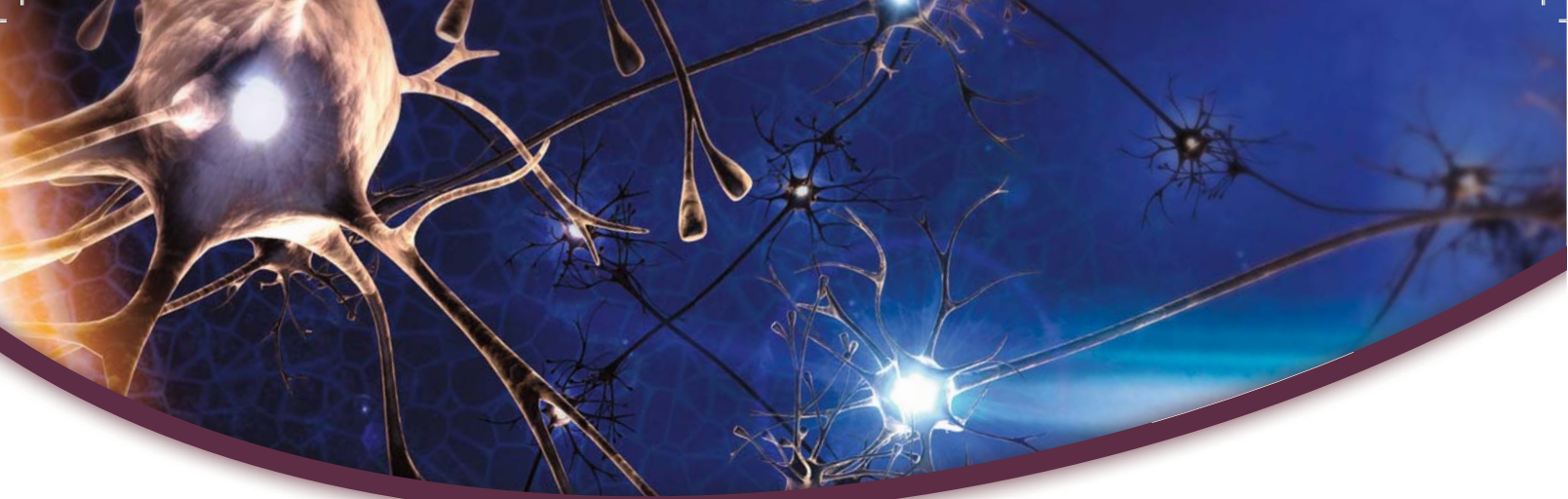
## NeuroJobs

SfN's ONLINE CAREER CENTER

Exhibit at the first-ever NeuroJobs Job Fair, expected to attract hundreds of job seekers at Neuroscience 2011. The event is free for all meeting attendees and will take place on Saturday, Nov. 12, 8:30 – 11 a.m. and 1 – 4 p.m.

Space is limited, so reserve your booth space now. Visit [www.sfn.org/neurojobsfair2011](http://www.sfn.org/neurojobsfair2011) or contact [awallace@sfn.org](mailto:awallace@sfn.org) for more information.





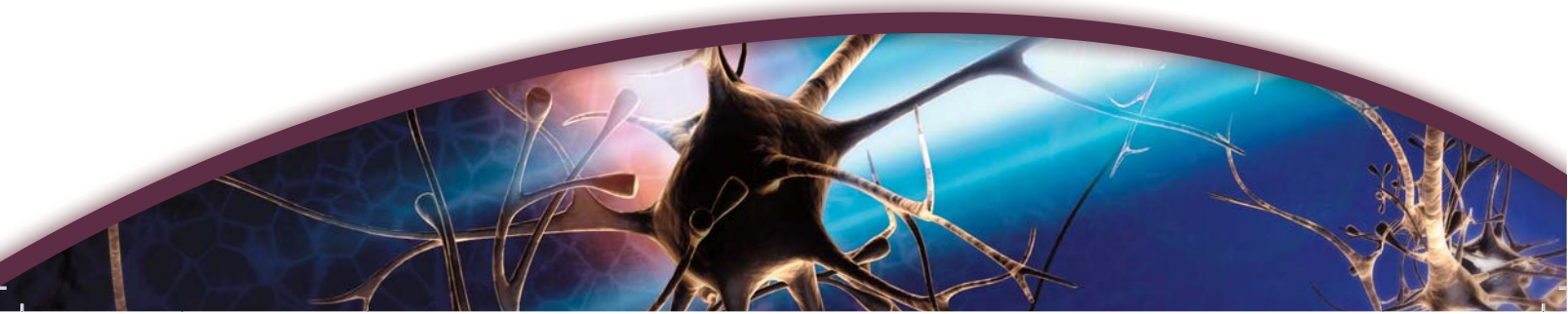
# GIVE TO THE FRIENDS OF SfN FUND

Give back by supporting the next generation of neuroscientists through travel awards and other career development initiatives.

To make a tax-deductible donation, simply mail a check payable to the Society for Neuroscience and note *Friends of SfN* in the memo line of your check. Gifts should be mailed to:

Society for Neuroscience  
c/o Friends of SfN  
1121 14th Street, NW Suite 1010  
Washington, DC 20005

To inquire about specific initiatives you can help to support, visit [www.sfn.org/supportsfn](http://www.sfn.org/supportsfn) or e-mail: [crush@sfn.org](mailto:crush@sfn.org).



# Join the Society for Neuroscience

## Are you an SfN member?

Join now and save on annual meeting registration. You'll also enjoy these member-only benefits:

- Abstract submission — only SfN members can submit abstracts for the annual meeting
- Lower registration rates and more housing choices for the annual meeting
- *The Journal of Neuroscience* — access *The Journal* online and receive a discounted subscription on the print version
- Free essential color charges for *The Journal of Neuroscience* manuscripts, when first and last authors are members
- Free online access to the *European Journal of Neuroscience*
- Premium services on NeuroJobs, SfN's online career resource
- Member newsletters, including *Neuroscience Quarterly* and *Nexus*

If you are not a member or let your membership lapse, there's never been a better time to join or renew. Visit [www.sfn.org/joinnow](http://www.sfn.org/joinnow) and start receiving your member benefits today.

[www.sfn.org/joinnow](http://www.sfn.org/joinnow)



bioengineering

# Biovelocity.

Create Knockout Rats and  
Mice in as few as 5 months with  
Sigma's exclusive CompoZr®  
ZFN technology.

Utilize Sigma's SAGESpeed™ process to produce a  
custom knockout animal according to your  
specifications or make knockout animals in your  
own lab by using CompoZr ZFN reagents.

Create the knockout of your dreams  
with Sigma Life Science.

[sageresearchmodels.com](http://sageresearchmodels.com)

 **SAGE** LABS  
Sigma Advanced  
Genetic Engineering

© 2011 Sigma-Aldrich Co. All rights reserved. Where bio begins, SAGE and SAGESpeed are trademarks of Sigma-Aldrich Co. and its affiliate Sigma-Aldrich Biotechnology, L.P. CompoZr, Sigma-Aldrich and Sigma are registered trademarks of Sigma-Aldrich Biotechnology, L.P., an affiliate of Sigma-Aldrich Co.

SIGMA-ALDRICH

**SIGMA** Where *bio* begins™  
Life Science