

### Correction: Lim et al., Optogenetic Mapping after Stroke Reveals Network-Wide Scaling of Functional Connections and Heterogeneous Recovery of the Peri-Infarct

In the article “Optogenetic Mapping after Stroke Reveals Network-Wide Scaling of Functional Connections and Heterogeneous Recovery of the Peri-Infarct” by Diana H. Lim, Jeffrey M. LeDue, Majid H. Mohajerani, and Timothy H. Murphy, which appeared on pages 16455–16466 of the December 3, 2014 issue, the authors noticed an error in Figure 7A. In the process of manuscript preparation, the 1 week stroke recovery plot for Figure 7A was inadvertently switched with a plot of 8 week stroke recovery data. Corrected Figure 7 is provided below. All original conclusions and statistics reported in the text were based on 1 and 8 week stroke recovery data respectively, and are not affected by the error in figure presentation.

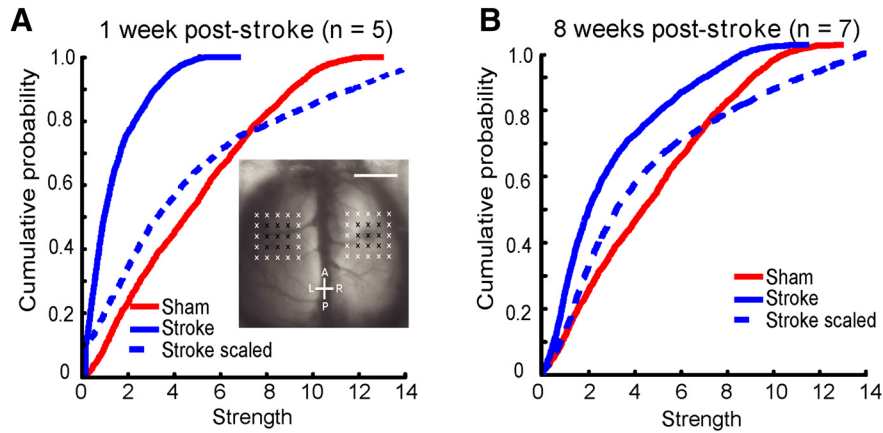


Figure 7.

DOI:10.1523/JNEUROSCI.1856-15.2015