

# Correction

## Correction: Shimozaki et al., Paired Related Homeobox Protein 1 is a Regulator of Stemness in Adult Neural Stem/Progenitor Cells

In the article “Paired Related Homeobox Protein 1 is a Regulator of Stemness in Adult Neural Stem/Progenitor Cells” by Koji Shimozaki, Gregory D. Clemenson, Jr., and Fred H. Gage, which appeared on pages 4066–4075 of the February 27, 2013 issue, the authors regret some errors discovered in Figure 1A, where some rows of the images were found upside down and row 4 should have read “Prx1” not “Prx1 + Mock.” The errors do not affect the results or the conclusions in the manuscript. The correct Figure 1 is shown below.

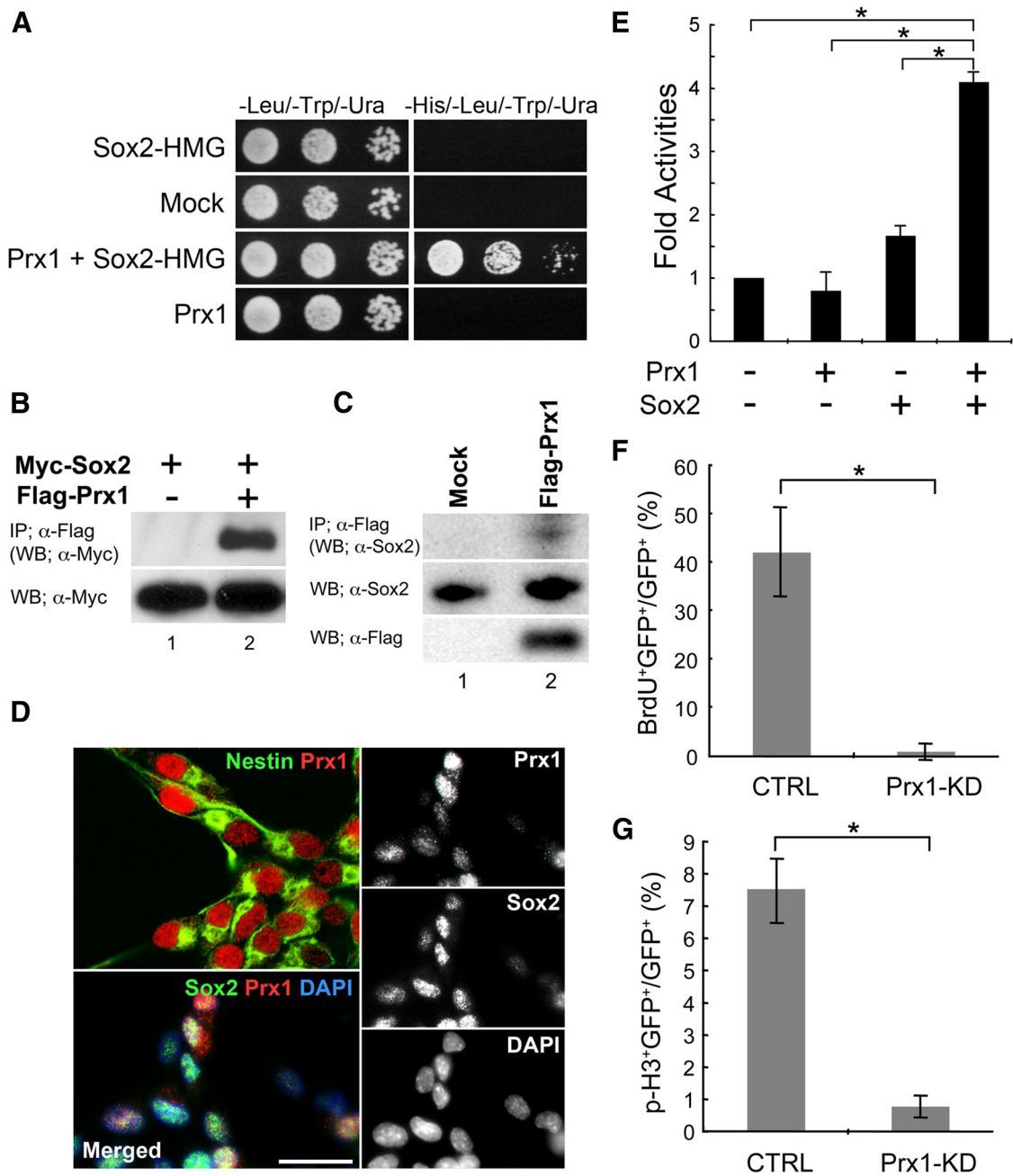


Figure 1.