

Viewpoints

Gender in Science, Technology, Engineering, and Mathematics: Issues, Causes, Solutions

 Tessa E.S. Charlesworth and Mahzarin R. Banaji

Harvard University, Cambridge, Massachusetts 02138

The landscape of gender in education and the workforce has shifted over the past decades: women have made gains in representation, equitable pay, and recognition through awards, grants, and publications. Despite overall change, differences persist in the fields of science, technology, engineering, and mathematics (STEM). This Viewpoints article on gender disparities in STEM offers an overarching perspective by addressing what the issues are, why the issues may emerge, and how the issues may be solved. In Part 1, recent data on gaps in representation, compensation, and recognition (awards, grants, publications) are reviewed, highlighting differences across subfields (e.g., computer science vs biology) and across career trajectories (e.g., bachelor's degrees vs senior faculty). In Part 2, evidence on leading explanations for these gaps, including explanations centered on abilities, preferences, and explicit and implicit bias, is presented. Particular attention is paid to implicit bias: mental processes that exist largely outside of conscious awareness and control in both male and female perceivers and female targets themselves. Given its prevalence and persistence, implicit bias warrants a central focus for research and application. Finally, in Part 3, the current knowledge is presented on interventions to change individuals' beliefs and behaviors, as well as organizational culture and practices. The moral issues surrounding equal access aside, understanding and addressing the complex issues surrounding gender in STEM are important because of the possible benefits to STEM and society that will be realized only when full participation of all capable and qualified individuals is guaranteed.

Key words: gender; STEM; implicit bias; explicit bias

Introduction

For centuries, the essence of what constitutes the human “female” and “male” has been portrayed through a lens of difference, even opposition (e.g., Gray, 1992). In theological, philosophical, literary, and scientific thought as well as in folk beliefs, “female” is represented as mentally lesser, weak, and relying on emotion, whereas “male” is represented as mentally superior, strong, and relying on rationality (Keller, 1985). As a consequence, women's lack of success, leadership, and representation in fields that emphasize rationality, especially fields of science, technology, engineering, and mathematics (STEM), used to be seen simply as a consequence of men and women's divergent nature and capacities (Keller, 1985).

Over the past 50 years, many of these beliefs are now antiquated (Saad, 2017; General Social Survey, 2019), having been challenged by women's advances into academe and the workforce, especially in the arts and humanities, but also in STEM. Today, U.S. women earn 57% of bachelor's degrees overall and

50% of bachelor's degrees in STEM (National Science Foundation, 2018). Gender parity is now within reach in the U.S. workforce (World Bank, 2018), and there remains no STEM field without representation of women, even in high-status positions (National Science Foundation, 2018). As such, the issue of “gender in STEM” is no longer about whether women have the capacity to succeed but rather the costs to STEM that will occur without the full participation of all qualified and capable candidates, including women. Regardless of one's personal feelings about uplifting women, the reality is that a diverse workforce and academe can provide both financial (Dezsö and Ross, 2012; e.g., Credit Suisse, 2012) and intellectual benefits (Lloyd et al., 2013; see, e.g., Galinsky et al., 2015). Thus, gender diversity is necessary to meet the demands of innovation and productivity in complex STEM environments (Page, 2011, 2018).

To understand how such demands of innovation and productivity can be fulfilled, behavioral scientists study the barriers to access and opportunity, especially those arising from explicit and implicit attitudes and stereotypes held by both men and women. To this end, the current Viewpoints article evaluates recent evidence on the extent, causes, and solutions to gender disparities in STEM, with a particular focus on the role of implicit cognition, mental processes that reflect “traces of past experience . . . unavailable to self-report or introspection” and are therefore less conscious and controllable than their explicit counterparts measured through self-report (Greenwald and Banaji, 1995, p. 4).

In Part 1, the magnitude of gender gaps in STEM representation, compensation, authorship, grant success, and awards is pre-

Received March 23, 2019; revised June 21, 2019; accepted July 27, 2019.

This work was supported by Harvard Dean's Competitive Fund for Promising Scholarship to M.R.B. All original data and analysis scripts reported in this paper are available through OSF: https://osf.io/n9jca/?view_only=35d16807663d4cddb34c0a64f43a999 (currently available as an anonymized view-only link that will be made public following peer-review). We thank Sapna Cheryan, Amanda Diekmann, Alice Eagly, Daniel Storage, and Martin Chalfie for comments on earlier versions of this manuscript.

The authors declare no competing financial interests.

Correspondence should be addressed to Tessa E.S. Charlesworth at tes371@g.harvard.edu or Mahzarin R. Banaji at mahzarin_banaji@harvard.edu.

<https://doi.org/10.1523/JNEUROSCI.0475-18.2019>

Copyright © 2019 the authors

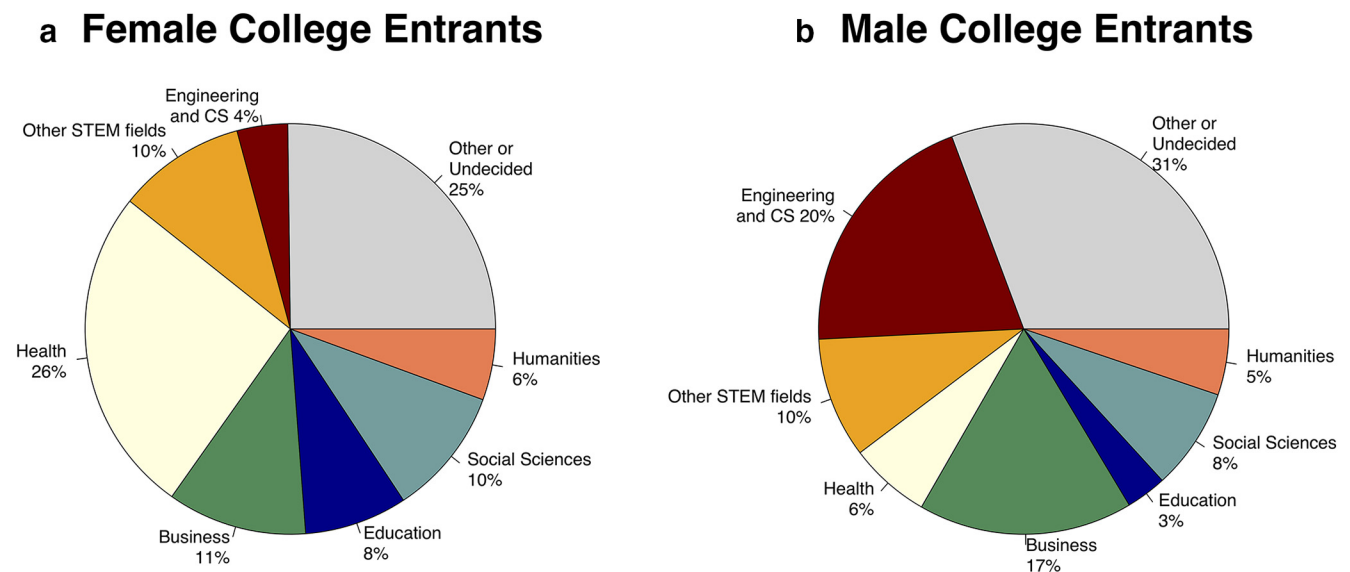


Figure 1. Gender gap in intent to major in STEM and non-STEM fields among U.S. college entrants: *a*, female; *b*, male. Data from National Center for Education Statistics High School Longitudinal Study (Radford et al., 2018, their Table 10). For compiled raw data and code, see <https://osf.io/n9jca/>.

Table 1. Representation of females across postsecondary education in STEM^a

	S&E fields (all)	S&E fields (without SBS)	Non-S&E fields (all)	Engineering	Computer Science	Mathematics	Physical Sciences	Biology
College (Associates)	44%	27%	63%	14%	21%	29%	42%	67%
College (BA)	50%	38%	61%	20%	18%	43%	39%	60%
Graduate school (MA)	45%	34%	64%	25%	30%	41%	35%	58%
Graduate school (PhD)	45%	41%	59%	23%	23%	28%	33%	53%

^aData retrieved from the National Science Foundation (2018), using the most recent available data from 2015. Within the National Science Foundation report, data on associate's degrees are from appendix Table 2–18, data on bachelor's degrees from appendix Table 2–21, data on master's degrees from appendix Table 2–27, and data on doctoral degrees from appendix Table 2–29. As per the National Science Foundation, science and engineering [S&E fields (all)] also include social and behavioral sciences (SBS), in addition to the traditional STEM fields of computer science, mathematics and statistics, physical sciences, and engineering. The traditional STEM fields alone (excluding the SBS fields) are referred to as S&E fields (without SBS) in the table. For compiled raw data and code, see <https://osf.io/n9jca/>.

sented, as well as how these gaps have changed over time. In Part 2, leading hypotheses about the causes of such gender gaps are evaluated: specifically, that women lag behind in STEM because of (1) innate and/or socially determined gender differences in abilities necessary for success, (2) innate and/or socially determined gender differences in preferences, lifestyle choices, or values among women and men, and (3) explicit and implicit bias in both women and men as they evaluate the work of women and men in STEM. Finally, in Part 3, interventions to reduce gender disparities in STEM by targeting both individual minds and organizational culture and practices are reviewed.

Part 1: The extent of gender disparities in science Representation

The gender gap in STEM representation starts early. By middle school, more than twice as many boys than girls intend to work in science or engineering-related jobs (Legewie and DiPrete, 2012). These differences continue through high school courses, particularly in computer science, engineering, and related subfields (Cunningham and Hoyer, 2015). For instance, although female U.S. high school students constitute 61% of AP biology, 52% of AP statistics, and 50% of AP chemistry students, they represent only 23% of AP computer science and 29% of AP physics students (National Science Foundation, 2018). In college, these disparities increase: 5 times more men than women report an intention to major in engineering and computer sciences (Fig. 1) (Radford et al., 2018).

While previous research stressed the issue of a “leaky pipeline” between college and graduate school (with women being partic-

ularly likely to opt out, or be pushed out, at this educational transition), new data suggest that, in the United States, the college-to-graduate school transition no longer leaks more women than men (Miller and Wai, 2015). As such, attention must be redirected to earlier transitions, including middle school-to-high school (Legewie and DiPrete, 2012), and high school-to-college (Shaw and Stanton, 2012), which are important both because they serve as gatekeepers for later STEM transitions, and also because “leaks” are still apparent at these junctions.

Even after persisting through early STEM education, women remain underrepresented throughout higher education in the United States, again particularly in computer science and engineering (Table 1; Fig. 2). While women now account for 57% of bachelor's degrees across fields and 50% of bachelor's degrees in science and engineering broadly (including social and behavioral sciences), they account for only 38% of bachelor's degrees in traditional STEM fields (i.e., engineering, mathematics, computer science, and physical sciences; Table 1). Moreover, over the past 15 years, the percentage of female associate's or bachelor's degree holders has remained stagnant in many STEM subfields (Fig. 2).

Strikingly, the representation of women has even decreased in computer science, with female associate's degrees dropping from 42% in 2000 to 21% in 2015, and the percentage of female bachelor's degrees dropping from 28% in 2000 to 18% in 2015 (National Science Foundation, 2018). Although explanations are elaborated in Part 2, the unique decreasing representation of women in computer science warrants consideration here. It is

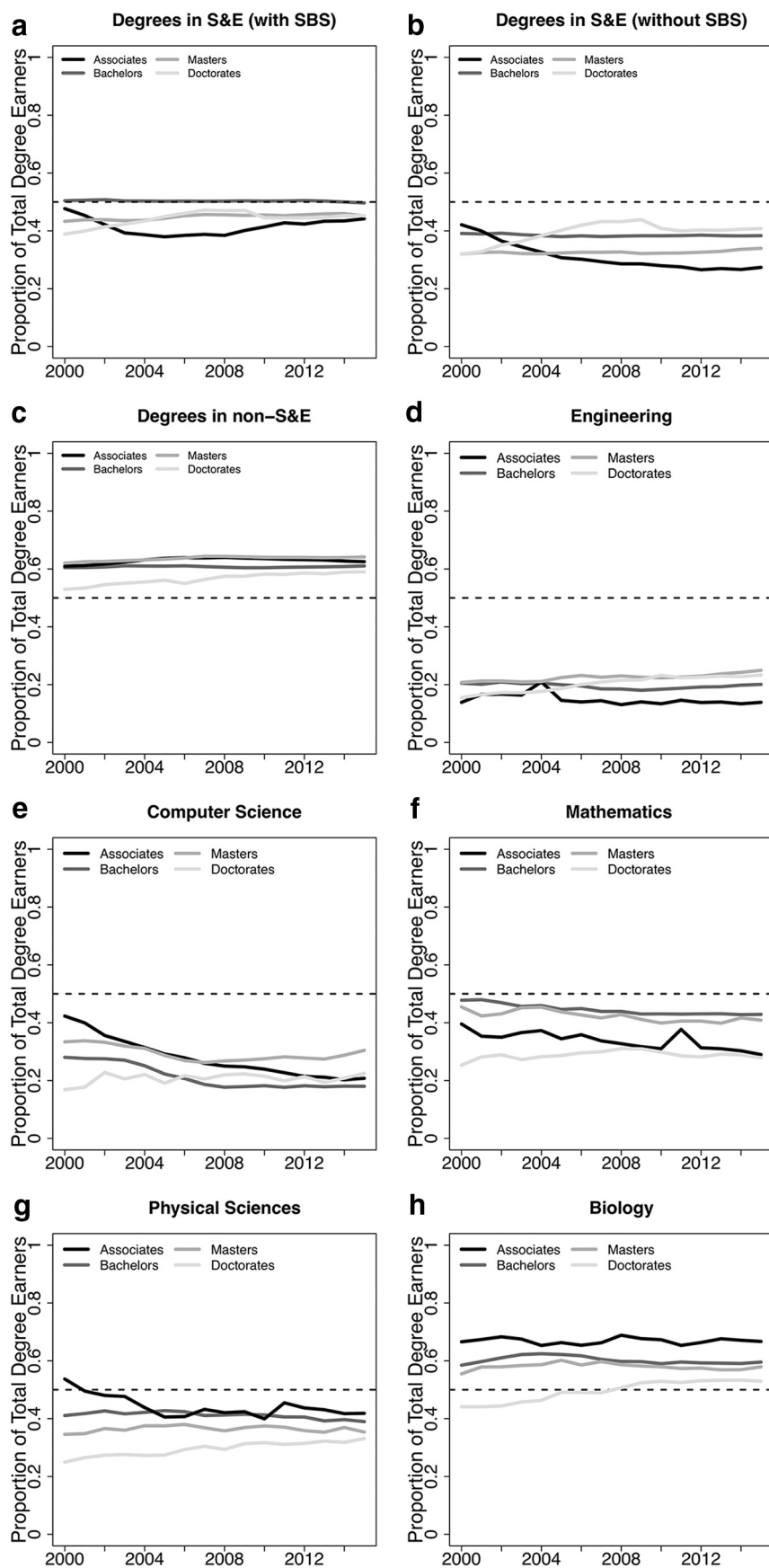


Figure 2. Proportion of degree earners that are females across postsecondary education (2000–2015) overall and in STEM subfields. Proportions of students in each field and degree that identify as female in (a) all science and engineering (S&E) fields, including social and behavioral science (SBS), (b) traditional S&E fields (excluding social and behavioral sciences), (c) all non-S&E

possible that increasing participation in precollege computer science training (College Board, 2018), coupled with the lack of early female role models or teachers in computer science, may increasingly lead young girls to preemptively opt out of college computer science because they have already internalized the stereotype that they do not belong (e.g., Master et al., 2016). Explaining the case of computer science representation remains a necessary direction for future research.

Finally, it is worth noting that underrepresentation in doctorate-level STEM education is greatest at the top 10% of institutions (Weeden et al., 2017). This suggests that factors, including self-selection and/or status-based biases, may continue to limit women's success throughout higher education (see Part 2).

As women progress into the academic and nonacademic workforce, they continue to be represented in lower numbers than men. In traditional STEM fields, despite earning 34% and 41% of MAs and PhDs, respectively, women compose only 25% of the STEM workforce and 27% of full-time, tenured professors (Hill et al., 2010; Corbett and Hill, 2015; National Science Foundation, 2018) (Table 2). Additionally, although gains have been made in faculty representation since the 1970s, the increases for senior faculty are often slower than increases for junior faculty and postdoctorates (National Science Foundation, 2018). In the case of computer science, for example, the percentage of female senior faculty has been relatively slow over the past 15 years, decreasing only 5 percentage points from 24% in 1999 to 19% in 2015, slower than the change in the percentage of junior faculty (which increased by 8 percentage points).

Importantly, this apparent stagnation in senior positions is partly a consequence of “demographic inertia,” or that women's later entrance in STEM results in more junior than senior faculty (e.g., Hargens and Long, 2002). However, computer simulations of women's career progress show that gender gaps in higher-status STEM positions are not entirely explained by inertia and the later entrance of women in STEM (Shaw and Stanton, 2012). These simulations show that, if the lack of female senior faculty were attribut-

fields, as well as STEM subfields of (d) computer science, (e) mathematics, (f) engineering, (g) physics, and (h) biology. Data from National Science Foundation (2018). For compiled raw data and code, see <https://osf.io/n9jca/>.

Table 2. Representation of females across career stages in STEM^a

	S&E fields (all)	S&E fields (without SBS)	Non-S&E fields (all)	Engineering	Computer Science	Mathematics	Physical Sciences	Biology
Postdoctorates	43%	42%	51%	23%	33%	20%	30%	50%
Junior faculty	43%	38%	51%	22%	26%	38%	29%	50%
Senior faculty	31%	27%	39%	14%	19%	21%	20%	39%
Employed workforce	28%	25%	50%	15%	24%	43%	28%	48%

^aData retrieved from the National Science Foundation (2018), using the most recent available data from 2015. Within the National Science Foundation report, data for academic positions are from appendix Tables 5–15, and data for employed workforce from appendix Table 3–12. As per the National Science Foundation, S&E fields (all) also include social and behavioral sciences, in addition to the more traditional STEM fields of computer science, mathematics and statistics, physical sciences, and engineering. The traditional STEM fields alone (excluding the SBS fields) are referred to as S&E fields (without SBS) in the table. For compiled data and code, see <https://osf.io/n9jca/>.

Table 3. Gender pay gap in STEM and non-STEM fields^a

	S&E fields (all)	Non-S&E fields (all)	Engineering	Computer Science	Mathematics	Physical Sciences	Biology
Men	95,000	75,000	95,000	100,000	89,000	83,000	68,000
Women	75,000	50,000	88,000	86,000	77,000	60,000	55,000
Gender pay gap	20,000	25,000	7000	14,000	12,000	23,000	13,000

^aMedian annual salaries (in dollars) of all full-time workers in 2015. Data retrieved from National Science Foundation (2018, their appendix Table 3–17).

able entirely to inertia, women would have made faster progress than what is observed in the real data. As such, additional factors, such as that the greatest demands of childbearing on women often coincide with the timing of tenure decisions (Cech and Blair-Loy, 2019), also appear to contribute to the low numbers of female senior faculty. This conclusion is crucial because it suggests that we cannot assume time alone will solve the issue of gender disparities in STEM.

Together, the data on representation provide three conclusions. First, gender gaps in STEM course-taking and interest emerge as early as middle and high school, with these early transitions crucial in gatekeeping later participation in STEM. Second, gender gaps are most pronounced, and have even increased over time, for subfields of computer sciences and engineering. Gaps in these two subfields have a disproportionate impact on the participation and advancement of women in STEM because they represent >80% of the STEM workforce (Landivar, 2013) and offer the highest monetary return on educational investment (Corbett and Hill, 2015). Third, the gender gap in the academic workforce is greatest in tenured and high-status faculty positions, and these gaps cannot be solved by time alone. Differences in representation provide the most basic data for the issue under review: they show a consistent lack of women in STEM careers; and because women are as capable as men to succeed in STEM (see Part 2), the result is a loss of productivity and innovation to both STEM and society (Page, 2018).

Compensation

Even when female scientists enter and persist in STEM careers, their economic compensation is not equal to that of their male colleagues (Blau and Kahn, 2017; American Association of University Women, 2018; National Science Foundation, 2018). In raw dollars, women in the U.S. STEM workforce are paid \$20,000 less than men, receiving the equivalent of 79% of men's earnings (Table 3).

When such statistics are reported, however, they are often mistakenly assumed to mean that women make 79% of men's earning, for the same work. This is not the case. The 79% statistic is confounded by additional gender differences in: (1) represen-

tation of subfields, with men overrepresented in private for-profit sectors versus nonprofit sectors, as well as in high-paying computer science/engineering versus lower-paying biology (see Representation); (2) seniority, with women's later entrance in STEM leading women scientists to be younger, on average, thus leading to lower compensation as a function of age and experience (National Science Foundation, 2018); and, finally, (3) the status of jobs held by men and women, with women more likely to occupy low-paying part-time positions, often to fulfill caregiving responsibilities (Cech and Blair-Loy, 2019).

Nevertheless, even after controlling for correlated variables to compare men and women doing equal work at equal ages and experience levels, women in STEM are still found to receive 9% less than men (National Science Foundation, 2018). Similarly, controlling for confounding variables does little to change the gender pay gap in male-dominated subfields (e.g., computer science and engineering) (Michelsmore and Sassler, 2017). This persistent difference is especially notable when compounded over a career. For example, recent simulations of gender pay gaps in medical sciences suggest that a pay gap of just 3% can accumulate into a difference of over \$500,000 in additional accumulated wealth across a scientist's career (Rao et al., 2018).

Importantly, as with all the data presented in this paper, the gender pay gap does not affect all women and men equally. Intersections with marital and parental status reveal a "motherhood penalty" for women with children and a "fatherhood bonus" for men with children (Correll et al., 2007; Benard et al., 2008). For instance, with each child, mothers' wages are reduced by ~5%, even after controlling for other factors, such as work hours and experience. Indeed, experimental audit studies indicate that, for identical applicants differing only in parental status, mothers were offered ~\$11,000 less than women without children (a gap of 7%) and ~\$13,000 less than fathers (a gap of 9%) (Correll et al., 2007). These same studies also indicate that a father is compensated ~4% more than an identical male candidate without children. These pay gaps are, in turn, explained by the perception that parenthood builds men's, but reduces women's, commitment (Correll et al., 2007), as well as the perception that mothers must trade between warmth and competence, whereas fathers are perceived as both warm and competent (Cuddy et al., 2004).

Intersections between gender and race are also noteworthy for pay gaps: for instance, Latina women in STEM earn only 54% of white men's earnings (American Association of University Women, 2018). Although intersectional data remain unfortunately rare, such findings reinforce that future research must collect fine-grained demographic data to better understand how outcomes (including compensation, representation, and recognition) operate across multiple identities.

Grant success, authorship, and awards

Grant success

Unlike the data on gender differences in representation and compensation, gender gaps in overall grant success rates now appear small to nonexistent. While early studies of funding patterns suggested that women were less likely to receive grants than men (e.g., in Sweden; Wenneras & Wold, 1997), this no longer appears to be the case among many U.S. funding agencies. Across the National Science Foundation (NSF), United States Department of Agriculture, and the National Institutes of Health (NIH), the percentage of female applicants receiving grants is now approximately equivalent to the percentage of male applicants receiving grants (Hosek et al., 2005; Pohlhaus et al., 2011; U.S. Government Accountability Office, 2015). This progress toward granting par-

ity is likely the result of the conscious efforts of governmental funding agencies to collect the necessary data and conduct formal reviews of their own evaluation processes and possible biases (e.g., through the NSF Authorization Act of 2002) (Hosek et al., 2005). In addition to such observational data showing similar success rates for men and women, recent experimental studies also indicate similar granting rates for identical male and female grant applicants (Forscher et al., 2019).

Nevertheless, subtle disparities linger. First, women are less likely to reapply (i.e., renew) their grants at NSF and NIH, with a 20% difference in renewal/reapplication rates at NIH and a 5% difference in renewal/reapplication rates at NSF (Hosek et al., 2005; see also Pohlhaus et al., 2011). Gender differences in the likelihood to renew a grant imply possible gender differences in research persistence (Hechtman et al., 2018), and may therefore be related to the aforementioned loss of female faculty at the junior-to-senior faculty transition.

Second, crucial data are lacking from funding bodies that represent particularly male-dominated subfields with an engineering or defense focus (e.g., NASA, Department of Defense, Defense Advanced Research Projects Agency, Department of Energy), where larger gender gaps in grant success rates may emerge (U.S. Government Accountability Office, 2015). As long as such agencies fail to collect or report the necessary data, beliefs, such as “DARPA does not fund women,” will continue to circulate in the academic folklore. Such beliefs may dissuade applications and, as a consequence, reduce the likelihood of receiving top quality applications from both female and male candidates.

Third, women appear less likely to apply for the top 1% of large grants at NIH (Hosek et al., 2005). This difference in applying for the largest NIH grants may contribute to the observation that NIH grants held by women are, on average, smaller in dollar amounts than the grants held by men (Hosek et al., 2005; Waisbren et al., 2008; Oliveira et al., 2019). However, observing overall differences in dollar amounts need not entail bias on behalf of the granting agency. Lower overall amounts may be due to either (1) women requesting less than men and therefore receiving less (suggesting no bias), or (2) women and men requesting similar amounts but women receiving less (suggesting bias). NSF reports data on both the amount requested and received and finds no gender differences in either the amount requested or received, suggesting no bias. However, the NIH only reports data on the amount received, making it impossible to determine the existence (or absence) of bias because the amount received cannot be directly compared with the amount actually requested. Collection and reporting of both requested and received amounts across applicant genders are foundational to identifying and understanding possible gender bias in STEM grants.

Finally, recent studies of Canadian Institutes of Health Research revealed that grant reviewers told to focus on evaluating the “scientist” (rather than the “quality of the science”) were 4 percentage points more likely to fund grants from men over women (see also Tamblyn et al., 2018; Wittman et al., 2019). This reinforces that evidence of lingering gender gaps in grant success rates are unlikely to be due to differences in the quality of women’s and men’s actual proposed research, but rather to the reviewer’s biased beliefs about women and men as researchers.

Despite these subtle differences in how male and female scientists consider, and are considered by, granting agencies, the general trends of parity in grant success are notable when contrasted with the disparities in compensation discussed above. As such, identifying the factors that explain grant parity, including the possible role of transparency in federal agencies (vs privacy in

Table 4. Percentage of female authors in STEM and non-STEM peer-reviewed publications, by author status^a

	Computer Science	Physics	Mathematics	Chemistry	Biology	Psychology	Education	Health
First author	17%	17%	19%	35%	43%	50%	61%	50%
Last author	15%	13%	19%	21%	29%	40%	49%	46%
Any authorship	16%	17%	18%	30%	37%	48%	55%	49%

^aData were most recent available data (2016) retrieved from Holman et al. (2018). Original data were collected from 36 million authors from >100 countries publishing in >6000 journals, accessed via PubMed and arXiv databases.

salary information), will inform theories about the causes and solutions to gender disparities in STEM more broadly.

Authorship

Like grant success, gender gaps in authorship of scientific publications are subtle. Aggregate statistics suggest that many fields and journals have attained gender parity in the success rates of female and male authors (Brooks and Della Sala, 2009; Allagnat et al., 2017), and the majority of fields are on their way toward parity (Holman et al., 2018). Nevertheless, some journals continue to favor manuscript submissions from authors of their own gender (Murray et al., 2019), and many fields, including computer science, physics, and math, suggest a gender gap in authorship that will persist for decades (Holman et al., 2018).

Furthermore, gaps are most notable for last authorships (now regarded in many fields as the highest-status authorship position), where women are often represented at lower rates than would be expected given their representation in senior faculty positions (Table 4 vs Table 2) (West et al., 2013; Holman et al., 2018; Shen et al., 2018). Additionally, although both male and female researchers have increased in publication rates over the past decade, some fields (e.g., psychology) have seen relatively greater increases among men, leading to an increasing gender gap in authorship over time (Ceci et al., 2014; Holman et al., 2018). Finally, in contrast to parity in authorship across most other fields, the data from neuroscience continue to show that women publish significantly fewer first and last author papers than men (Schrouff et al., 2019) (see also biaswatchneuro.com).

Awards

Awards for research in STEM remain male-dominated. Across 13 major STEM society awards, 17% of award winners were female (Lincoln et al., 2012) compared with the base rates of representing 38% of STEM junior faculty and 27% of STEM senior faculty (Table 2). Underrepresentation is especially notable in prestigious awards: women represent 14% of recipients for the National Medal of Science, 12% for the Nobel Prize in Medicine, 6% for the American Chemical Society Priestly Medal, 3% for the Nobel Prize in Chemistry, 3% for the Fields Medal in mathematics, and 1% for the Nobel Prize in Physics (RAISE project, 2018).

While it could be that such underrepresentation is due, in part, to the relatively later entry of women into STEM (i.e., aforementioned “demographic inertia”) (Hargens and Long, 2002), such an explanation would not be applicable to early-career awards. In line with the notion of inertia accounting for award gaps, some early-career awards, such as the Presidential Early Career Award for Scientists and Engineers (38% women recipients among NSF nominees) and the Society for Neuroeconomics Early Career Award (40% women recipients) reveal award rates similar to the base rate of 38% of Junior Faculty. Nevertheless, other early-career awards continue to show disparities, including the Society for Neuroscience Young Investigator Award (19% women recipients) and the Elsevier/VSS Young Investigator

Award (25% women recipients). Moreover, one of the most prestigious early-career awards, the NSF Alan T. Waterman Award, has been won by only 6 women over the past 43 years (14% of recipients). These early-career data emphasize that, although some progress has been made, solving gender disparities in STEM awards is not simply about waiting for women to “catch up” (Shaw and Stanton, 2012).

Underrepresentation in research awards contrasts with overrepresentation in teaching and service awards (Metcalf, 2015). For example, in astronomy, where the base rate is that women receive 10% percentage of PhDs, women receive 3% of scholarly awards but 15% of teaching and service awards (Popejoy and Leboy, 2018). As discussed in Part 2, the reasons for such overrepresentation in teaching awards are likely complex, including women’s advantages in language and communication abilities, as well as differences in where women versus men are expected to succeed. Indeed, the recognition of women for teaching, but not research, aligns with the expectations that women are warm but incompetent (Glick and Fiske, 1996; Fiske et al., 2002), and therefore should be good teachers but poor researchers. In sum, evidence is strong that gender disparities in STEM encompass gaps in representation, compensation, research awards, and, to a lesser extent, grant success and authorship.

Part 2: Presumed causes of gender disparities in science

In the past, a dominant assumption about gender disparities in STEM concerned women’s lack of ability due to biological, innate, and/or immutable differences (Keller, 1985). Over time, a more complex possibility was added: observed gender differences may not be exclusively shaped by innate or immutable abilities but may also be influenced by sociocultural factors (Ceci et al., 2014). Along a different dimension, it was previously assumed that the social barriers to women’s entrance and advancement in STEM were exclusively from the prejudices held by men about women. Over time, this assumption has also been revised: both men and women evaluators can be involved in gender discrimination (e.g., Moss-Racusin et al., 2012). Finally, while the focus was previously on the biases of other people evaluating the work of women, a more complex thesis also looks at possible bias within both women and men themselves, including their own preferences, biology, and social experiences that may encourage opting in (or out) of certain careers (e.g., Diekmann et al., 2010). Thus, the presumed causes of gender disparities in STEM have shifted over time as new evidence and interpretations emerge.

Today, the debates surrounding the causes of gender disparities in STEM often settle around three interrelated hypotheses. Gender disparities may arise from (1) innate and/or socially determined gender differences in STEM ability, (2) innate and/or socially determined gender differences in STEM preferences and lifestyle choices, and (3) explicit and implicit biases of both men and women in perceptions of men and women’s work.

Differences in ability

Given the complexity of STEM careers, the abilities predicting success must be diverse. Yet for most of the 20th century, researchers focused almost exclusively on predicting gender differences in STEM success from single skills, such as math ability (Hyde, 2014). It was only at the end of the 20th century, after decades of data on standardized tests had accumulated, that evidence suggested the gender differences were rapidly closing for many cognitive abilities, including math ability (Feingold, 1988).

Recent representative studies and meta-analyses reinforce this result, showing that gender gaps in overall math performance have dropped to trivial differences: studies of >7 million students in state math assessments indicate gender differences of only $d = 0.0065$, meaning that the averages of men and women on math assessments are almost perfectly overlapping (Hyde et al., 2008). And a meta-analysis of 242 studies shows a mere difference of $d = 0.05$ on math performance, again indicating almost perfect overlap of men and women’s average performance (Lindberg et al., 2010). The weight of the evidence therefore implies gender parity in math ability (Hyde, 2014, 2016; Zell et al., 2015).

In response, some researchers and public officials have argued that, while gender differences have disappeared in average mathematics ability (i.e., the middle of the distribution), men nevertheless remain overrepresented as high-performers (i.e., right-tail of the distribution) (Ceci et al., 2014). On the one hand, nationally representative samples indeed reveal slight but consistent advantages for boys on standardized math tests, with a 2:1 overrepresentation among math high-performers from kindergarten (Penner and Paret, 2008) to grade 7 (Wai et al., 2010). On the other hand, these same studies reveal that the gender gap in high-performers has closed rapidly over time, moving from 13.5:1 in the 1980s, to 3.8:1 in the 1990s, to 2:1 today (Penner and Paret, 2007; Wai et al., 2010). This rapid closing of the gap on both average and high-performing math ability (Wai et al., 2010; Hyde, 2014) challenges the assumption that differences are rooted in immutable traits.

Additionally, gender differences in both average and high-performing math ability vary greatly across cultures (Else-Quest et al., 2010; Gray et al., 2019), across U.S. states (Pope and Sydnor, 2010), and across ethnic groups (Penner and Paret, 2008; Hyde and Mertz, 2009), providing evidence of mutability based on local contexts. Finally, gender differences in math performance are most notable when gender stereotypes are activated before a test: creating stereotype threat by framing a math test as “known to show gender differences” impairs females’ performance relative to framing the same test as “not showing gender differences” (Spencer et al., 1999; Nguyen and Ryan, 2008; but see Stoet and Geary, 2012). This further highlights the role of mutable beliefs rather than immutable biological traits as the most likely explanations of historic gender differences in math performance. Thus, there remains no compelling evidence that gender differences in math ability are immutable or biologically innate (Spelke, 2005; Ceci and Williams, 2010; Ceci et al., 2014; Hyde, 2016).

Moreover, even an overrepresentation of 2:1 among math high-performers would not be sufficient to account for the nearly 5:1 disparity seen in the representation of senior faculty in STEM fields (Table 2), the 7:1 disparity seen in first versus last authorship rates for some fields (Table 4), or differences in median salaries (Table 3). Other factors must therefore contribute, such as gender differences in academic self-efficacy (Dixson et al., 2016) or math confidence (Flanagan and Einarson, 2017). In sum, because gender differences in math ability (1) produce small to nonexistent effects, (2) are disappearing over time, and (3) cannot fully explain the large and persistent gaps, it can no longer be said that women and men are treated differently in STEM because of different cognitive capacities in mathematics. Recognizing this conclusion, researchers have turned to examining other abilities that may contribute to gender differences in STEM.

Two additional skills relevant to STEM success are spatial and language ability, and both show consistent gender differences (Halpern et al., 2007). On many tests of spatial cognition, espe-

cially those involving 3D mental rotation tasks, men significantly outperform women, with a meta-synthesis of 70 meta-analyses revealing that men are approximately one-half an SD above women ($d = 0.57$) (Zell et al., 2015). However, even on 3D rotation tasks, gender differences fluctuate as a function of subject age, testing format, and test framing (Voyer et al., 1995; Huguët and Régner, 2009; Voyer, 2011), with reversals to female advantages even observed when mental rotation tasks are framed as “art tasks” rather than “math tasks” (Huguët and Régner, 2009). Furthermore, other aspects of spatial cognition reveal female advantages (e.g., object identity memory), or no gender differences (e.g., object location memory) (Voyer et al., 2007).

In contrast to spatial cognition, language skills appear to consistently favor women (Hyde and Linn, 1988; Halpern et al., 2007; Miller and Halpern, 2014). Recent estimates from national assessments document female advantages of approximately one-fourth of an SD ($d = -0.27$) for reading and one-half SD ($d = -0.54$) for writing (Reilly et al., 2019). Moreover, gender gaps in language ability have not shown significant change from 1988 to 2011 (Reilly et al., 2019). This implies that the causes of language differences, whether biological, as suggested by the overrepresentation of men with reading impairments (Rabiner and Coie, 2000; Halpern et al., 2011a), and/or socio-psychological, as suggested by the sex-typing of language abilities as “female” (Marinak and Gambrell, 2010; Halpern et al., 2011b), have remained stable over time, unlike closing gaps for other abilities.

Although often overlooked, the role of reading and writing is arguably just as relevant to STEM as math or spatial skills. The ability to comprehend verbal material and to communicate effectively through writing and speaking are obvious components of success in publications, grants, presentations, and effective STEM teaching or leadership. Indeed, long-term success in STEM careers is likely to be predicted by a set of skills, including abilities in language, spatial rotation, math, and more (Ackerman et al., 2013). It is therefore worth focusing on the diversity of skills available within an individual rather than emphasizing any single quality.

Differences in preferences, values, or lifestyle choices

The cause of gender disparities in STEM has increasingly been linked to gendered roles, values, and lifestyle preferences (Ceci et al., 2009, 2014; Ceci and Williams, 2011). In particular, the “goal congruity hypothesis” (Diekmann et al., 2010) was so-named to capture the idea that women make the choice, from both socio-cultural pressures and innate psychological orientations, to opt out of STEM because they perceive their gendered goals to be incongruent with the nature of STEM work, the opportunities available in STEM, and their likelihood of success. Simply, women perceive a mismatch between their goals/values and the STEM environment.

These values are argued to arise early in childhood, when boys and girls experience both social pressures and possibly innate inclinations to occupy different roles: boys are expected to (and, on average, do) prefer activities that are competitive and active, whereas girls are expected to (and, on average, do) prefer activities that are communal and involve helping (Eagly, 1987). These early-formed values cascade into later life, with women more likely to endorse communal, group-serving, people-oriented, family, and altruistic values, and men more likely to endorse agentic, self-serving, thing-oriented, money, and status values (Ferriman et al., 2009; Su et al., 2009; Diekmann et al., 2010; Weisgram et al., 2011).

Simultaneously, STEM environments are perceived, on both explicit self-reports and indirect implicit measures, to be envi-

ronments that endorse power, status, competitiveness, and isolation (Diekmann et al., 2011). Such qualities are therefore viewed as incompatible with the communal group-serving values that women (more than men) appear to endorse (Diekmann et al., 2015). Analogously, evidence points to men avoiding communal group-serving environments (e.g., healthcare, early education, and domestic work) because these careers are viewed as incompatible with both the status-based and self-serving values that men (more than women) appear to endorse (Block et al., 2018).

As a consequence of such mismatch between values and environments, women may be particularly likely to opt out of (and men particularly likely to opt into) subfields that are perceived to strongly endorse the “brilliance,” status, and competition (i.e., mathematics, engineering, and computer science), thereby accounting for differences in representation across subfields (Meyer et al., 2015; see, e.g., Leslie et al., 2015). Additionally, women may be more likely to select low-paying part-time positions to better facilitate family goals, whereas men may be more likely to select high-paying status-based positions, possibly contributing to the gender pay gap. Women may also be more likely to perform service activities to satisfy communal group-serving values, whereas men may be more likely to focus on research activities to satisfy agentic self-serving values, contributing to disparities observed in service versus research awards. The match between values and environments (i.e., goal congruity) may therefore play a role in explaining gender gaps across representation, pay, and recognition.

Yet the question remains whether STEM environments are inherently incompatible with values that women are more likely to endorse, or whether generations of male-dominated STEM environments have led to a perception of incompatibility. If it is more about historical perceptions, then increasing the perception that a STEM environment can satisfy group-serving values should correspondingly increase women’s success and persistence in STEM.

Indeed, describing STEM tasks and careers as emphasizing communal group-serving values (Diekmann et al., 2015), helping (Weisgram and Bigler, 2006), or dedication (Bian et al., 2018), rather than competition, isolation, or brilliance, increases women’s interest in pursuing and persisting in STEM. For example, when female general population participants read about a STEM internship or major that emphasizes dedication (vs brilliance), they are approximately one-half an SD more likely to report interest (Bian et al., 2018). Similarly, females in college are found to be more likely to feel like they belong in STEM after subtle environmental cues that emphasize STEM stereotypes of isolation or competition (e.g., *Star Trek* posters) are removed (Cheryan et al., 2009). Thus, the goal mismatch appears to be rooted in perception rather than inherent features of STEM environments. As such, it is important to examine where this perception comes from (Cheryan et al., 2017), especially the role of implicit and explicit biases in shaping perceptions of beliefs, values, and the environment.

Explicit and implicit bias

Beliefs and stereotypes that associate men, more than women, with science, math, leadership, or careers have long been documented on explicit, self-report measures and representative polls (General Social Survey, 2019). Yet self-reports are limited in that respondents may be unwilling to state their full beliefs (for fear of appearing biased), and/or may be unable to state their full beliefs (because of limited introspective access to one’s own mind) (Greenwald and Banaji, 1995). Recognizing these limitations, re-

searchers have argued that biased beliefs can exist at both an explicit and implicit level: the latter being relatively more automatic, less conscious, and less controllable than the former. The most widely used measurement of implicit biases, the Implicit Association Test (IAT) (Greenwald et al., 1998), uses response latencies to indirectly capture the overlap between concepts, such as “male” and “science” versus “female” and “arts.”

Implicit and explicit biases are related but distinct psychological constructs (Nosek and Smyth, 2007). For instance, while a person responding to a survey may explicitly say that they believe both men and women are capable in science, the same person may nevertheless show faster responses when pairing male-science (and female-arts) words compared with when pairing male-arts (and female-science) words, suggesting that they hold implicit beliefs linking men (more than women) with science over arts. Crucially, explicit and implicit biases both contribute to predicting behaviors and outcomes (Kurdi et al., 2019) and are therefore both necessary to understand the operation of bias in STEM. Moreover, given the general disappearance of explicit bias against women in STEM (General Social Survey, 2019), it would be difficult to explain the slowness of change in women’s representation and success without considering the possibility that biased gender perceptions and evaluation may also emanate from mental operations outside conscious control.

To understand the possible role of implicit and explicit biases in STEM gender disparities, the extent of these biases needs to be examined. If implicit biases are only identified, for example, in older adults, men, or those from particular geographic regions, then the biases are unlikely to play a role in accounting for widespread gender gaps in STEM. If, however, implicit biases are found to be persistent and pervasive, then their role within STEM becomes more meaningful. More than two decades of research on implicit gender stereotypes have conclusively shown that gender biases in STEM are indeed prevalent across the lifespan, across genders, across nations, and across time.

Implicit gender bias across the lifespan

Implicit gender-STEM stereotypes are documented from the earliest ages tested: by at least 6 years of age, both boys and girls implicitly associate math with boys more than with girls (Cvencek et al., 2011). Even in Singapore, a country where girls excel in mathematics, implicit stereotypes of boys = math/girls = reading are similarly early-emerging for both boys and girls (Cvencek et al., 2014). This is striking as it suggests that biased beliefs may emerge, even in the absence of evidence. At the same ages, children also endorse explicit stereotypes, including the belief that math is more for boys than girls (Cvencek et al., 2011), and that boys, more than girls, are “really, really smart” (Bian et al., 2017).

New analyses of nearly 300,000 respondents from the Project Implicit Demonstration website (<http://implicit.harvard.edu>) extend these findings through adolescence and adulthood, providing similar conclusions of early emergence (Fig. 3). By elementary and middle school (respondents <14 years old), 58% of respondents already show a strong, moderate, or slight implicit stereotype that men = science/women = arts, whereas only 17% show an opposite stereotype of women = science/men = arts and 25% show a neutral association, as measured by the IAT.

Notably, the strength of the implicit men = science/women = arts association increases slightly through the later lifespan: 68% of high schoolers, 71% of college students, 68%–69% of early-career respondents (ages 22–40), 72%–74% of mid-career respondents (ages 40–55), and 77% of older respondents (ages 55+) show implicit men = science/women = arts associations,

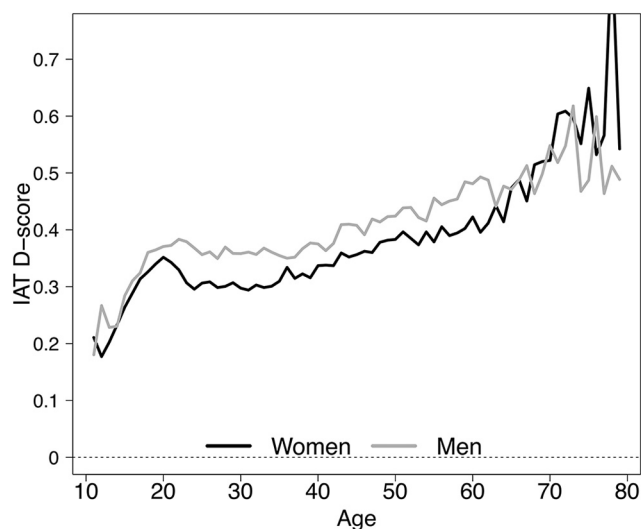


Figure 3. Implicit men = science/women = arts stereotypes across the lifespan, by gender. Data from the Project Implicit Demonstration website. For compiled raw data and code, see <https://osf.io/n9jca/>.

with similar age-related trajectories in both women and men. Although these data are cross-sectional (making it difficult to disambiguate an age effect from an effect of historical changes over time), the increasing stereotype strength across ages nevertheless mirrors the trends of increasing underrepresentation from high school to college to full professorships. Age-related increases in stereotype strength may therefore represent either a cause and/or consequence of increases in gender disparities across career trajectories.

Implicit gender bias across genders

Surprisingly, women and men hold similarly strong implicit gender-STEM stereotypes. Data from Project Implicit show that, overall, 69% of women and 72% of men express slight, moderate, or strong implicit men = science/women = arts associations (see also Nosek et al., 2007). Nevertheless, gender differences in implicit stereotypes emerge among scientists from particular STEM subfields (Nosek and Smyth, 2011; Smeding, 2012; Smyth and Nosek, 2015): women employed in male-dominated subfields (e.g., math or engineering) express significantly weaker implicit men = science/women = arts stereotypes than men in those subfields, whereas women employed in female-dominated subfields (e.g., humanities) express significantly stronger stereotypes than men in those subfields. This suggests that women already in science may perceive science as equally applicable to women and men, perhaps as a consequence of their own identification with science (e.g., Nosek et al., 2002), or being exposed to more female scientist role models (Dennehy and Dasgupta, 2017). In contrast, women outside of science may neither identify with science nor be exposed to the same frequency of female scientists and may therefore associate STEM more with men than women. However, it is worth emphasizing that even women already in science still hold an implicit stereotype of men = science/women = arts (Smyth and Nosek, 2015), implying that identification alone may not be sufficient to override pervasive cultural stereotypes.

Implicit gender bias across countries

In every country where the IAT has been used, there is an association of men = science/women = arts (Nosek et al., 2009; Miller et al., 2015). No country shows the opposite association. Yet, despite this widespread prevalence, there is also meaningful vari-

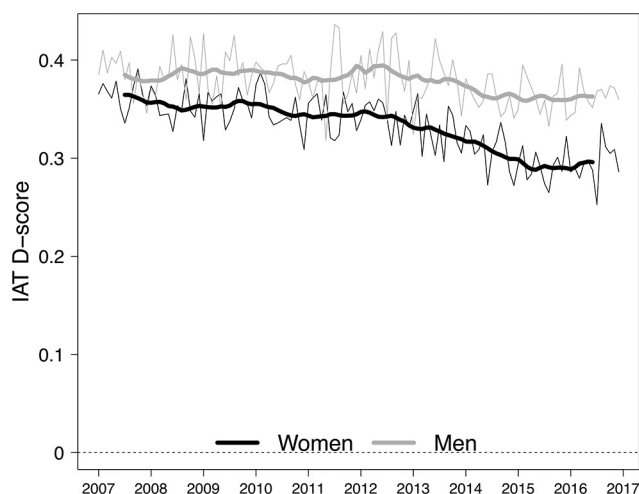


Figure 4. Change over time in implicit men = science/women = arts stereotype, by gender (2005–2017). Weighted monthly means (weighting to control for sample change over time) are plotted in thin gray (for men) and black lines (for women). Decomposed trend lines (removing seasonality and random noise) are plotted in thick gray (for men) and black lines (for women). Data from the Project Implicit Demonstration website. For compiled raw data and code, see <https://osf.io/n9jca/>. For further details on analysis method, including controls for alternative explanations, such as sample change over time, see Charlesworth and Banaji (2019b).

ability. Nation-level differences in the strength of implicit gender-science stereotypes are correlated with nation-level differences in gender gaps on national eighth grade math and science assessments (Nosek et al., 2009), as well as nation-level differences in gender gaps in STEM representation (Miller et al., 2015). These results are important because they highlight (1) that implicit gender-science stereotypes are not necessarily innate or inherent, since they vary across countries, and (2) that implicit gender-science stereotypes can help explain gender disparities in STEM, since variability in stereotypes correlates with variability in STEM achievement and representation.

Implicit gender bias across time

Explicit gender stereotypes and attitudes against working women and female scientists have decreased markedly over the past several decades (CNN, 2012; Huang et al., 2018; General Social Survey, 2019). Yet absence of bias has not been achieved: even on self-reported attitudes and beliefs, 25% of U.S. respondents in 2018 agreed or strongly agreed that it was better for a man to work and a woman to stay home (General Social Survey, 2019). Moreover, subtle biases are even more persistent, with women still perceived as “warm” but “incompetent” (Haines et al., 2016; Fiske, 2018), and still described with words, such as “caring” and “emotional,” rather than words, such as “competent” or “intelligent” (Garg et al., 2018). While some progress has been made, gender bias continues in both explicit and subtle ways.

In line with this simultaneous progress and stability, new analyses of the Project Implicit dataset examining change in implicit men = science/women = arts stereotypes from 2007 to 2016 reveal that implicit gender stereotypes have decreased by ~16% overall (comparable to change in implicit race and skin-tone attitudes) (Charlesworth and Banaji, 2019a). Crucially, however, this change appears to be largely isolated to women (whose implicit bias has decreased by 19%), with relatively little change observed among men (decreased by only 6%; Fig. 4). This result is unique, as almost every other implicit attitude or stereotype shows parallel change between men and women; there appears to

be a particular intransigence among men’s implicit gender-science stereotypes. Moreover, although overall trends of change in implicit gender stereotypes are both surprising and encouraging, the biases remain far from neutrality and suggest relative persistence over time.

In sum, implicit gender-science stereotypes are present across the lifespan, in both men and women, in every nation, and across time. Such persistence and prevalence in implicit biases match the prevalence of gender disparities in STEM representation, pay, and recognition. Together, these data reinforce that (1) gender-science stereotypes exist both in explicit statements and on implicit measures that tap less controllable beliefs; (2) gender-science stereotypes are not isolated to some people in only some parts of the world but, rather, are widespread; and (3) this pervasiveness, as well as variability within and across regions, provides an opportunity for deeper theoretical understanding of the mechanisms behind gender disparities in STEM.

The operation of implicit and explicit gender biases in STEM

If implicit and explicit biases indeed play a causal role in gender disparities in STEM, how would one know? What would evidence for bias look like? Complementary sources of evidence would be most persuasive. First, if bias is operating, then observational evidence of gender disparities (e.g., data on representation, pay, and awards/recognition) should reveal persistent disparities, even after alternative explanations or correlated variables are accounted for (e.g., subfield, part-time vs full-time job status). For example, the aforementioned 9% pay gap that persists after controlling for alternative explanations implies that an additional causal mechanism (i.e., bias) may be operating.

Second, if bias is operating, then correlational evidence should reveal a relationship between the magnitude of gender disparities and the magnitude of implicit or explicit gender stereotypes. This is suggested, for example, in the finding that larger gender gaps on national science and math assessments are positively correlated with stronger implicit gender-science stereotypes on the IAT, even after controlling for explicit stereotypes and alternative explanations (Nosek et al., 2009).

Third, the strongest evidence for bias is experimental. In particular, experimental resume and audit studies can show that identical candidates (with the same resume and qualifications) receive differential treatment exclusively due to gender, and that the extent of such differential treatment is predicted by evaluators’ explicit and implicit gender stereotypes. With these three standards of evidence, the possible operation of bias is examined in (1) hiring and compensation, (2) grants, publications and awards, and (3) organizational and academic culture.

Hiring and compensation

Evidence for the operation of gender biases in hiring and compensation comes primarily from experimental audit studies showing that women applicants in STEM are less likely to be hired and also receive lower starting salaries than men with identical records (Steinpreis et al., 1999; Moss-Racusin et al., 2012; Reuben et al., 2014; Milkman et al., 2015; but see Williams and Ceci, 2015). To illustrate one such study, Moss-Racusin et al. (2012) asked faculty from biology, chemistry, and physics to evaluate the application of a prospective laboratory manager on their hire-ability, competence, suggested salary, and deservingness of mentoring. Candidates’ applications were identical, with the exception of whether the candidate’s name was female or male.

Six results from this study are notable: (1) despite identical resumes, the female candidate was perceived as less hire-able than

the male candidate; (2) the female candidate was offered the equivalent of 88% of the male candidate's salary; (3) the female candidate was perceived to be less deserving of mentoring than the male candidate; (4) both male and female faculty evaluators were more likely to select and more generously compensate and mentor male candidates; (5) the extent of differential evaluation was mediated by the perception of greater competence in male than female candidates; and (5) the extent of this perceived competence gap was, in turn, moderated by the strength of faculty's subtle gender bias (measured via self-reported modern sexism or beliefs that are benevolent but paternalistic) (Swim et al., 1995). Together, these findings highlight the operation of subtle gender biases as a mechanism behind hiring, compensation, and mentoring disparities (Moss-Racusin et al., 2012).

Importantly, implicit biases measured through the IAT have also been shown to explain such gender disparities. For instance, Reuben et al. (2014) asked participants ("employers") to hire a candidate for a simple math task, and were given a choice between two candidates who were matched on performance but not gender. Further, in some conditions, employers were given information about the candidates' past performance on the math task. The results provide three noteworthy conclusions. First, when employers had no information other than the candidates' gender, the employers (both male and female) were half as likely to hire the female candidate than the male candidate, implying a baseline preference for males over females. Second, this gender-biased hiring was reduced, but not eliminated, when employers were given information about the two candidates' identical past performance, indicating that the employers were not sufficiently updating their beliefs. That is, if employers had sufficiently updated following evidence of equivalent performance, then hiring should also have been equivalent between male and female candidates. Third, both the extent of the initial hiring bias and the extent of the updating bias were correlated with employers' implicit stereotypes associating men = math and science/women = liberal arts. Thus, implicit bias may help explain not only initial gaps in hiring and representation but also the persistence of these gaps, even in the face of evidence showing women's capacities and success in STEM.

Large-scale correlational data are consistent with these experimental findings. On explicit measures of bias, the greater the number of academics in a STEM field who endorse the beliefs that (1) brilliance (rather than dedication) is required for success, (2) men are more brilliant than women, and (3) women are not suited to scholarly work, the lower the representation of female faculty in those fields (Leslie et al., 2015; Meyer et al., 2015). Similarly, the higher the endorsement of an explicit association between science and male, the lower the number of female faculty in that field (Smyth and Nosek, 2015). Importantly, these correlations between representation and explicit stereotypes remain significant after controlling for proxies of personal values (e.g., perceived selectivity/competitiveness of the field, working part-time vs full-time to satisfy family values). Thus, the role of bias may persist above values and lifestyle choices.

Women's representation in STEM is also correlated with implicit measures of gender bias. First, the more men majoring in a STEM field express the implicit men = science/women = arts stereotype, the lower the number of women in that field (Smyth and Nosek, 2015). Second, the more a nation expresses the implicit men = science/women = arts stereotype, the lower the number of women in STEM in that nation (Miller et al., 2015). Third, the more a field describes professors with traits of brilliance and genius (as measured indirectly through language in

teaching evaluations), the lower the number of women in that field (Storage et al., 2016). Finally, recent evidence suggests that the greater the implicit men = science stereotype of a promotions committee (and the less that committee believes that external, systemic barriers hamper women's success in STEM), the less likely women are to be promoted by the committee (Regner et al., 2019). Again, statistically significant correlations between implicit stereotypes and representation remain after controlling for measures of mathematics aptitude, field selectivity, or hours worked (i.e., part-time/full-time), again suggesting a role for bias above alternate explanations, such as ability or values.

Nevertheless, evidence from these experimental and correlational studies needs to be reconciled with data from the NSF, the National Center for Education Statistics, and faculty surveys reporting that, from 1995 to 2003, women applying for professorships in STEM were hired at rates commensurate to their application rate, implying no hiring biases (National Academy of Sciences, 2010). Additionally, a recent audit study suggests that, in fields of biology, psychology, and engineering, women appear to have a 2:1 advantage in hiring for tenure-track positions (Williams and Ceci, 2015).

Explaining such discrepancies will likely require many factors, including (1) changes over time in the focus on equitable hiring practices and proactive efforts to reconcile past gender disparities (leading earlier studies to show more bias than later studies), (2) experimental differences in the measured outcomes (e.g., hiring a laboratory manager vs evaluating a candidate for a math task vs hiring a tenure-track faculty) and the fields studied (e.g., psychology vs engineering), and/or (3) applicant differences (e.g., women may have a higher threshold and be more self-selective for applying to jobs) (Ceci et al., 2014). Continued research is needed to resolve correlational, experimental, and observational evidence, as well as to understand disproportionately lower hiring rates and compensation of mothers, racial minority women, women in high-status positions, and women in engineering and computer science.

Publications, grants, and awards

Observational evidence, reviewed in Part 1, suggests the encouraging result of overall gender parity in authorship, grants, and awards in STEM. Nevertheless, subtle gender differences persist on indicators, such as (1) last authorship positions (Holman et al., 2018), (2) application rates for the top 1% of grants (Hosek et al., 2005), and (3) rates of research versus service awards (Metcalfe, 2015; Popejoy and Leboy, 2018). While these data suggest the operation of bias because gender disparities persist after accounting for alternative explanations, compelling experimental evidence for the operation of implicit and explicit biases in publications, grants, and awards remains limited (Eagly and Miller, 2016).

With respect to gender bias in academic publications, audit studies indicate that publications, conference abstracts, and fellowship applications from men are more likely to be accepted, rated as higher quality and indicating more competence, and given more collaboration interest than quality-matched materials from women (Wenneras and Wold, 1997; Knobloch-Westerwick et al., 2013; Krawczyk and Smyk, 2016). These few studies imply that subtle disparities in publications may arise from biased evaluations from peer reviews.

On the other hand, removing gender (i.e., by masking the author's gender through double-blind reviews) does not appear to increase the rate of publication success for women (Webb et al., 2008; Tomkins et al., 2017). While it is possible that the lack of

efficacy in double-blind review is due to men producing better publications (for many reasons, including differences in caregiving demands, or differences in risk-taking with “big” research ideas), it may be more likely due to the fact that author gender can be detected, even without the author’s gendered name. Indeed, author gender could be determined using cues, such as style of writing (Argamon et al., 2003), word use (Kolev et al., 2019), and overall tendency to self-cite (Eagly and Miller, 2016). Thus, reviewers’ implicit or explicit biases may be able to persist, even under double-blind conditions because the reviewers can still detect author gender.

The operation of gender bias in grants and awards has also received limited experimental study. One recent experimental audit study shows no evidence of gender bias in initial grant reviews at NIH (Forscher et al., 2019). Additionally, a review screening 170 papers identified only one study that directly assessed the effect of gender bias in grant review (Tricco et al., 2017). This study found that removing gender through double-blinding did not increase the proportion of women’s successful grant applications (Ledin et al., 2007), although (as aforementioned) double-blind conditions may not entirely eliminate evaluators’ ability to detect applicants’ gender, and the conclusions are therefore limited.

Finally, to our knowledge, there remains no experimental evidence that directly measures the role of implicit or explicit biases in the persistent gap in research versus service awards (Lincoln et al., 2012; Popejoy and Leboy, 2018), suggesting an important focus for future research. While numerous cognitive biases (e.g., shifting standards, halo effects, confirmation bias) are likely to disrupt objectivity in the review of publications, grants, and awards (Kaatz et al., 2014), further research is needed to experimentally quantify the role of such biases.

Organization and academic culture

Beyond disparities of representation, compensation, and recognition, implicit and explicit biases may also operate in the experiences of the organization and academic culture. Gender differences in experiences of a hostile culture have received increasing attention through the #metoo movement and highly publicized allegations of harassment. Large-scale empirical reports also indicate that hostile culture is a persistent and pervasive problem: at least half of all female academics in STEM (vs 19% of male academics in STEM) report experiencing sexual harassment, and even greater numbers (78%) of females in male-dominated STEM workplaces report experiencing gender-based discrimination (Funk and Parker, 2018; National Academies of Sciences Engineering and Medicine, 2018).

The operation of bias in producing these gender differences in organizational experiences is suggested by audit studies showing that a female scientist is offered less mentorship relative to an identical male scientist as a result of the evaluators’ biases (Correll et al., 2007; Moss-Racusin et al., 2012). This decreased mentoring may, in turn, hamper female scientists’ feelings of belonging and identification and exacerbate feelings of a hostile climate. Indeed, women in STEM are more likely than men to report a lack of belonging (Cheryan and Plaut, 2010; Cheryan et al., 2017; McPherson et al., 2018), a lack of support and free expression (Xu, 2008), a lack of mentorship and role models (Cheryan and Plaut, 2010; Cheryan et al., 2011), and a lack of feeling identified with or competent in STEM (Spencer et al., 1999; Ertl et al., 2017), including on implicit measures (Nosek et al., 2002).

Finally, correlational studies show that the extent of reported gender-based harassment in an academic field is correlated with the strength of men’s implicit gender stereotypes in that field, as

both gender-based harassment and implicit gender stereotypes are greatest in male-dominated fields (see also Smyth and Nosek, 2015; Dresden et al., 2018). Thus, although no direct experimental evidence can be offered for the operation of bias in producing hostile organizational climates, correlational data, audit studies on mentoring, and observational data on belonging together suggest a possible role for implicit and explicit biases that is worthy of attention (Funk and Parker, 2018; National Academies of Sciences Engineering and Medicine, 2018).

Part 3: How? Proposed solutions to gender disparities in science

When faced with the type of data presented in Parts 1 and 2, nearly every STEM organization has had to consider the ways to address the biases, both inside and outside women themselves, that limit women’s full participation in STEM (National Academy of Sciences, 2006, 2010; Hill et al., 2010; Lebrecht et al., 2012; Corbett and Hill, 2015; Valentine and Collins, 2015; National Science Foundation National Center for Science and Engineering Statistics, 2017). Crucially, because the issues of gender in STEM involve human beliefs and decision-making that seem familiar to all individuals, there are often well-intentioned interventions based only on personal experiences or intuitions and not grounded in evidence or routine evaluations. Such approaches may backfire. For example, Dobbin and Kalev (2013) showed that most diversity training implemented from the 1960s to the early 2000s had either no impact or even slightly reduced the diversity of the workforce (see also Paluck and Green, 2009). Addressing gender bias in STEM should therefore be treated with rigorous evidence, as would be expected of any other STEM project (Kang and Kaplan, 2019). This section provides a brief review of recent and rigorous evidence-informed and evaluated interventions that focus on reducing gender disparities in STEM by changing individual minds/behavior (i.e., individual-level gender bias) or organizational cultures/practices (i.e., organization-level gender bias).

Changing individual-level gender bias

Individual-level bias emerges in both “perceivers” (e.g., individuals making decisions about a person at the time of recruiting, hiring, or promoting) as well as in “targets” themselves (e.g., women’s and men’s own beliefs about themselves in STEM). Individual-level interventions therefore differ in whether they focus on reducing the biases of perceivers or targets.

First, to reduce the biases of perceivers, and to increase their willingness to promote change, interventions using a “habit-breaking” approach have been shown to effectively reduce both racial and gender biases (Devine et al., 2012, 2017; Carnes et al., 2015; Forscher et al., 2017). These interventions assume that implicit biases are like “habits.” As such, bias is best addressed by making participants aware of the biased habits they may have through education on the science of implicit bias and its consequences for behavior. After promoting bias awareness, participants in the “habit-breaking” intervention are equipped with strategies argued to reduce bias in the mind. For example, participants are taught techniques, such as “putting oneself in another’s shoes” (perspective-taking), thinking of people from other groups as individuals rather than just as homogeneous group members (individuation), and generating examples of people from other groups who challenge stereotypical assumptions (e.g., Marie Curie; counterstereotype exposure). While some of these strategies have shown mixed effects when implemented in isola-

tion, especially perspective-taking (Catapano et al., 2019) and intergroup contact (Paluck et al., 2018), the combination of strategies, coupled with the educational approach, shows promise in addressing gender disparities in STEM.

To illustrate, in a cluster-randomized-controlled trial of 92 STEM departments, faculty members in departments that received the 2.5 h “habit-breaking” workshop reported more awareness of implicit bias and more actions to promote gender equity, even after a delay of 3 months (Carnes et al., 2015). These individual-level changes also trickled up into organization-level changes in both culture (with greater experiences of belonging reported by both men and women) (Carnes et al., 2015) and practices (with more gender-equitable hiring) (Devine et al., 2017). Indeed, while the number of women hired in control departments remained unchanged over 2 years, the number of women hired in intervention departments increased by 18%. Thus, “habit-breaking” appears to have real-world effectiveness in STEM.

Although promising, the habit-breaking intervention nevertheless requires a relatively large time commitment and trained educators. As such, it may not be easily and widely applied across organizations. Partly to address scalability, the Video Interventions for Diversity in STEM (<https://academics.skidmore.edu/blogs/vids/>) adopt similar approaches to the “habit-breaking” interventions by promoting gender bias literacy through freely available videos consisting of six 5 min presentations, each discussing the results of a peer-reviewed study on gender bias. Video Interventions for Diversity in STEM have been found to successfully reduce explicit gender biases, increase awareness of everyday bias, and increase self-efficacy to confront bias among both general public and academic faculty participants (Pietri et al., 2017; Hennes et al., 2018; Moss-Racusin et al., 2018), and may be applicable for many organizations.

Finally, interventions using evidence-based confrontation, in which participants are provided with objective, personalized evidence of having exhibited gender bias in evaluations, have also shown some effectiveness in reducing perceiver biases (Parker et al., 2018). Specifically, these interventions have been found to increase participants’ negative self-directed affect (e.g., guilt) and, as a consequence, increase participants’ concern about, and intentions to control, future bias. However, confrontation interventions also produce defensiveness (Parker et al., 2018) and, without labor-intensive personalization, are often dismissed (Gulker et al., 2013). Additionally, they appear to be less effective in changing the biases of men than women (Handley et al., 2015; Moss-Racusin et al., 2015). Given the dominant presence of men in STEM, this lower efficacy for men is a nontrivial concern, and evidence-based confrontations may therefore need further study.

Beyond the biases of the perceivers, there is also a role for the self-defeating perceptions, attitudes, and beliefs held by those in underrepresented groups (e.g., women themselves) (Jost and Banaji, 1994; Jost et al., 2004). To this end, interventions have focused on increasing identification, belonging, and persistence among the targets of discrimination. With this goal, promising interventions have found that contact with female (vs male) peers, professionals, and teachers improves women’s implicit identification with STEM, as well as greater self-efficacy and more effort on STEM tests (Stout et al., 2011). Indeed, even a 1 h interaction with a female role model in STEM increases the probability that Grade 12 students in France will enroll in a selective male-dominated STEM class by up to 30% (Breda et al., 2018). And a single letter from a female role model can improve course

grades and reduces dropout among U.S. introductory psychology and chemistry students (Herrmann et al., 2016).

Crucially, in contrast to the assumption that women can only achieve benefits from female role models (which inadvertently places an additional service burden on female mentors), the gender of the role model appears to be less important than their ability to challenge stereotypes (Cheryan et al., 2011; Fuesting and Diekmann, 2017). For example, if a male role model challenges STEM stereotypes (e.g., by wearing a plain T-shirt rather than a T-shirt reading “I code therefore I am,” or expressing that they like to hang out with friends rather than that they like to watch anime), the counterstereotypical male role model appears to be just as helpful as a female role model in promoting women’s beliefs about success in STEM (Cheryan et al., 2011). Encouraging the wide adoption of these simple counterstereotypical signals among both male and female faculty may therefore be an actionable step to help foster women’s own success beliefs in STEM.

Changing organization-level gender bias

STEM environments exhibit biases that have consequences for women’s safety, performance, and perceived belonging (see section on “Explicit and implicit bias” above). While much of this hostile climate comes from the accumulation of individual biases, a climate is also grounded in structural features, ranging from the possibility of flexible work arrangements (Fuller and Hirsh, 2018), to the presence of stereotype-reinforcing decorations in physical spaces (Cheryan et al., 2009). Allowing flexible work arrangements in STEM can have beneficial effects on the treatment and advancement of women (particularly mothers) because the arrangements both endorse and facilitate communal and family values. Although there are stigmas surrounding flexible work arrangements (e.g., Cech and Blair-Loy, 2014), the benefits appear to outweigh these costs: indeed, flexible work can reduce the wage gap for mothers by reducing within-organization disparities and allowing mothers to enter high-wage establishments (Fuller and Hirsh, 2018). Given that female junior faculty with children and working partners spend 20 h more per week on household and childcare duties than their male counterparts (Harvard University Office of the Senior Vice Provost, 2014), focusing on reducing or supporting women’s household and childcare duties may be crucial to ensuring equal advancement in STEM.

Large-scale organizational change, such as implementing flexible work policies, can often be slow. These changes can therefore be supplemented by more immediate interventions to improve the ongoing experiences of women in STEM. For instance, as discussed in the section on “Differences in preferences, values, or lifestyle choices,” improvements in both men and women’s belonging in STEM can be achieved by removing cues of masculine stereotypes in classrooms (e.g., *Star Trek* posters) (Cheryan et al., 2009).

Similarly, increasing the perception that STEM environments can satisfy group-serving values, such as by emphasizing the daily tasks of scientists that involve mentorship or helping, leads female college students to report more interest and investment in STEM careers (Diekmann et al., 2011). Changing such subtle linguistic cues can also have positive outcomes on self-reported STEM interest for children as early as elementary and middle school (Weisgram and Bigler, 2006; Tyler-Wood et al., 2012; Colvin et al., 2013; Rhodes et al., 2019). It is these types of changes (e.g., emphasizing the opportunities of group-serving values) that are anecdotally described to lead to milestone achievements,

such as the recent success of women composing an impressive 48% of Carnegie Mellon's incoming 2016 computer science class (Spice, 2016). While we may take for granted how we describe and decorate STEM environments, reducing the subtle stereotypicality in environments can improve women's self-reported feelings of belonging and interest in STEM. As such, critically evaluating and, if necessary, changing our own organizations and workplaces (including job postings or office decorations) may be a small but effective action to promote gender equity.

The emerging trends in interventions to reduce individual and organizational gender biases are promising. However, additional research is needed: (1) using both laboratory-based experiments and randomized-control-trial designs in the field; (2) assessing implicit and explicit stereotypes as both outcomes and mediators of behavior change; (3) looking at differences across STEM subfields; and (4) addressing intersectional biases toward minorities and mothers. Additionally, research that identifies the overarching characteristics of successful interventions is crucial (Paluck and Green, 2009; Dobbin and Kalev, 2013; Moss-Racusin et al., 2014). At present, it appears that, regardless of the target (individual or organizational), interventions are more effective when they (1) are grounded in theory and evidence, (2) involve active learning and responsibility rather than lecturing or forced training, (3) avoid assigning personal blame or guilt, and (4) include evaluation plans of intervention efficacy (Kang and Kaplan, 2019).

In conclusion, the mental makeup of men and women is more similar than different (Hyde, 2005, 2014). Despite these similarities, the outcomes and experiences of men and women in STEM continue to exhibit differences. Gender gaps in STEM are evident in representation (particularly in high-status positions and in subfields of computer sciences and engineering), compensation, and, to a lesser extent, grants, publications, and awards. The weight of the evidence no longer supports that these gaps are the result of innate ability differences. Instead, gender gaps in STEM appear, in part, to arise from differences in perceived values and opportunities in environments, as well as pervasive implicit and explicit biases that shape the perceptions of these values and environments. While initial evidence to address disparities is promising, much remains to be understood about the most effective interventions to reduce individual and organizational gender biases. The pursuit of understanding and addressing the causes of gender disparities in STEM is crucial to bring our often-biased behaviors and decisions in line with our values of equality and fairness (Charlesworth and Banaji, 2019b). Yet perhaps more importantly, ensuring the full participation of the highest-quality candidates (including women) guarantees improvement in the productivity and innovation of STEM discoveries, technologies, and applications that, ultimately, will improve societies.

References

- Ackerman PL, Kanfer R, Beier ME (2013) Trait complex, cognitive ability, and domain knowledge predictors of baccalaureate success, STEM persistence, and gender differences. *J Educ Psychol* 105:911–927.
- Allagat L, Berghmans S, Falk-Krzesinski HJ, Hanafi S, Herbert R, Huggett S, Tobin S (2017) *Gender in the global research landscape*. Amsterdam: Elsevier.
- American Association of University Women (2018) *The simple truth about the gender pay gap*. Washington, DC: American Association of University Women.
- Argamon S, Koppel M, Fine J (2003) Gender, genre, and writing style in formal. *Text* 23:321–346.
- Benard S, Paik I, Correl JS (2008) Cognitive bias and the motherhood penalty. *Hastings Law J* 59:1359–1388.
- Bian L, Leslie SJ, Cimpian A (2017) Gender stereotypes about intellectual ability emerge early and influence children's interests. *Science* 355:389–391.
- Bian L, Leslie SJ, Murphy MC, Cimpian A (2018) Messages about brilliance undermine women's interest in educational and professional opportunities. *J Exp Soc Psychol* 76:404–420.
- Blau FD, Kahn LM (2017) The gender wage gap: extent, trends, and explanations. *J Econ Lit* 55:789–865.
- Block K, Croft A, Schmader T (2018) Worth less? Why men (and women) devalue care-oriented careers. *Front Psychol* 9:1353.
- Breda T, Grenet J, Monnet M, van Effenterre C (2018) Can female role models reduce the gender gap in science? Evidence from classroom interventions in French high schools. HAL, halshs-0173068.
- Brooks J, Della Sala S (2009) Re-addressing gender bias in cortex publications. *Cortex* 45:1126–1137.
- Carnes M, Devine PG, Baier Manwell L, Byars-Winston A, Fine E, Ford CE, Forscher P, Isaac C, Kaatz A, Magua W, Palta M, Sheridan J (2015) The effect of an intervention to break the gender bias habit for faculty at one institution: a cluster randomized, controlled trial. *Acad Med* 90:221–230.
- Catapano R, Tormala ZL, Rucker DD (2019) Perspective taking and self-persuasion: why “putting yourself in their shoes” reduces openness to attitude change. *Psychol Sci* 30:424–435.
- Cech EA, Blair-Loy M (2014) Consequences of flexibility stigma among academic scientists and engineers. *Work Occup* 41:86–110.
- Cech EA, Blair-Loy M (2019) The changing career trajectories of new parents in STEM. *Proc Natl Acad Sci U S A* 116:1810862.
- Ceci SJ, Williams WM (2010) Sex differences in math-intensive fields. *Curr Dir Psychol Sci* 19:275–279.
- Ceci SJ, Williams WM (2011) Understanding current causes of women's underrepresentation in science. *Proc Natl Acad Sci U S A* 108:3157–3162.
- Ceci SJ, Williams WM, Barnett SM (2009) Women's underrepresentation in science: sociocultural and biological considerations. *Psychol Bull* 135: 218–261.
- Ceci SJ, Ginther DK, Kahn S, Williams WM (2014) Women in academic science: a changing landscape. *Psychol Sci Public Interest* 15:75–141.
- Charlesworth TES, Banaji MR (2019a) Patterns of implicit and explicit attitudes: I. Long-term change and stability from 2007 to 2016. *Psychol Sci* 30:174–192.
- Charlesworth TES, Banaji MR (2019b) Can Implicit Bias Change? Harvard Business Review. Available at <https://hbr.org/2019/08/research-on-many-issues-americans-biases-are-decreasing>.
- Cheryan S, Plaut VC (2010) Explaining underrepresentation: a theory of precluded interest. *Sex Roles* 63:475–488.
- Cheryan S, Plaut VC, Davies PG, Steele CM (2009) Ambient belonging: how stereotypical cues impact gender participation in computer science. *J Pers Soc Psychol* 97:1045–1060.
- Cheryan S, Siy JO, Vichayapai M, Drury BJ, Kim S (2011) Do female and male role models who embody STEM stereotypes hinder women's anticipated success in STEM? *Soc Psychol Pers Sci* 2:656–664.
- Cheryan S, Ziegler SA, Montoya AK, Jiang L (2017) Why are some STEM fields more gender balanced than others? *Psychol Bull* 143:1–35.
- CNN (2012) CNN | ORC Poll: Support for working women almost unanimous. Available at <http://i2.cdn.turner.com/cnn/2012/images/04/16/rel4b.pdf>.
- College Board (2018) More students than ever are participating and succeeding in AP. Available at <https://www.collegeboard.org/releases/2018/more-students-than-ever-are-participating-and-succeeding-in-advanced-placement>.
- Colvin W, Lyden S, León de la Barra BA (2013) Attracting girls to civil engineering through hands-on activities that reveal the communal goals and values of the profession. *Leadership Manage Eng* 13:35–41.
- Corbett C, Hill C (2015) *Solving the equation: the variables for women's success in engineering and computing*. Washington, DC: American Association of University Women.
- Correll SJ, Benard S, Paik I (2007) Getting a job: is there a motherhood penalty? *Am J Sociol* 112:1297–1339.
- Credit Suisse (2012) Gender diversity and corporate performance. Available at https://www.calstrs.com/sites/main/files/file-attachments/csr_gender_diversity_and_corporate_performance.pdf.
- Cuddy AJ, Fiske ST, Glick P (2004) When professionals become mothers, warmth doesn't cut the ice. *J Soc Issues* 60:701–718.
- Cunningham BC, Hoyer KM (2015) Gender differences in science, technology, engineering, and mathematics (STEM) interest, credits earned, and

- NAEP performance in the 12th grade. Available at <https://nces.ed.gov/pubs2015/2015075.pdf>.
- Cvencek D, Meltzoff AN, Greenwald AG (2011) Math-gender stereotypes in elementary school children. *Child Dev* 82:766–779.
- Cvencek D, Meltzoff AN, Kapur M (2014) Cognitive consistency and math-gender stereotypes in Singaporean children. *J Exp Child Psychol* 117:73–91.
- Dennehy TC, Dasgupta N (2017) Female peer mentors early in college increase women's positive academic experiences and retention in engineering. *Proc Natl Acad Sci U S A* 114:5964–5969.
- Devine PG, Forscher PS, Austin AJ, Cox WT (2012) Long-term reduction in implicit race bias: a prejudice habit-breaking intervention. *J Exp Soc Psychol* 48:1267–1278.
- Devine PG, Forscher PS, Cox WT, Kaatz A, Sheridan J, Carnes M (2017) A gender bias habit-breaking intervention led to increased hiring of female faculty in STEM departments. *J Exp Soc Psychol* 73:211–215.
- Dezső CL, Ross DG (2012) Does female representation in top management improve firm performance? A panel data investigation. *Strategic Manage J* 33:1072–1089.
- Diekmann AB, Brown ER, Johnston AM, Clark EK (2010) Seeking congruity between goals and roles: a new look at why women opt out of science, technology, engineering, and mathematics careers. *Psychol Sci* 21:1051–1057.
- Diekmann AB, Clark EK, Johnston AM, Brown ER, Steinberg M (2011) Malleability in communal goals and beliefs influences attraction to STEM careers: evidence for a goal congruity perspective. *J Pers Soc Psychol* 101:902–918.
- Diekmann AB, Weisgram ES, Belanger AL (2015) New routes to recruiting and retaining women in STEM: policy implications of a communal goal congruity perspective. *Soc Issues Policy Rev* 9:52–88.
- Dixon DD, Worrell FC, Olszewski-Kubilius P, Subotnik RF (2016) Beyond perceived ability: the contribution of psychosocial factors to academic performance. *Ann N Y Acad Sci* 1377:67–77.
- Dobbin F, Kalev A (2013) The origins and effects of corporate diversity programs. *The Oxford handbook of diversity and work*, Vol 1. Oxford: Oxford.
- Dresden BE, Dresden AY, Ridge RD, Yamawaki N (2018) No girls allowed: women in male-dominated majors experience increased gender harassment and bias. *Psychol Rep* 121:459–474.
- Eagly AH (1987) Sex differences in social behavior. John M. MacEachran Memorial Lecture series, Vol 1985. Mahwah, NJ: Erlbaum.
- Eagly AH, Miller DI (2016) Scientific eminence: where are the women? *Perspect Psychol Sci* 11:899–904.
- Else-Quest NM, Hyde JS, Linn MC (2010) Cross-national patterns of gender differences in mathematics: a meta-analysis. *Psychol Bull* 136:103–127.
- Ertl B, Luttenberger S, Paechter M (2017) The impact of gender stereotypes on the self-concept of female students in STEM subjects with an underrepresentation of females. *Front Psychol* 8:703.
- Feingold A (1988) Cognitive gender differences are disappearing. *Am Psychol* 43:95–103.
- Ferriman K, Lubinski D, Benbow CP (2009) Work preferences, life values, and personal views of top math/science graduate students and the profoundly gifted: developmental changes and gender differences during emerging adulthood and parenthood. *J Pers Soc Psychol* 97:517–532.
- Fiske ST (2018) Stereotype content: warmth and competence endure. *Curr Dir Psychol Sci* 27:67–73.
- Fiske ST, Cuddy AJ, Glick P, Xu J (2002) A model of (often mixed) stereotype content: competence and warmth respectively follow from perceived status and competition. *J Pers Soc Psychol* 82:878–902.
- Flanagan KM, Einarsen J (2017) Gender, math confidence, and grit: relationships with quantitative skills and performance in an undergraduate biology course. *CBE Life Sci Educ* 16:ar47.
- Forscher PS, Mitamura C, Dix EL, Cox WT, Devine PG (2017) Breaking the prejudice habit: mechanisms, timecourse, and longevity. *J Exp Soc Psychol* 72:133–146.
- Forscher PS, Cox WT, Brauer M, Devine PG (2019) Little race or gender bias in an experiment of initial review of NIH R01 grant proposals. *Nat Hum Behav* 3:257–264.
- Fuesting MA, Diekmann AB (2017) Not by success alone: role models provide pathways to communal opportunities in STEM. *Pers Soc Psychol Bull* 43:163–176.
- Fuller S, Hirsh CE (2018) Jobs and motherhood pay penalties: the impact of flexible work arrangements across the educational spectrum. *Work Occup* 46:3–44.
- Funk C, Parker K (2018) Women and men in STEM often at odds over workplace equity. Washington, DC: Pew Research Center.
- Galinsky AD, Todd AR, Homan AC, Phillips KW, Apfelbaum EP, Sasaki SJ, Richeson JA, Olayon JB, Maddux WW (2015) Maximizing the gains and minimizing the pains of diversity: a policy perspective. *Perspect Psychol Sci* 10:742–748.
- Garg N, Schiebinger L, Jurafsky D, Zou J (2018) Word embeddings quantify 100 years of gender and ethnic stereotypes. *Proc Natl Acad Sci U S A* 115:E3635–E3644.
- General Social Survey (2019) GSS data explorer key trends. Retrieved from <https://gssdataexplorer.norc.umd.edu/trends>.
- Glick P, Fiske ST (1996) The ambivalent sexism inventory: differentiating hostile and benevolent sexism. *J Pers Soc Psychol* 70:491–512.
- Gray J (1992) Men are from Mars, women are from Venus: a practical guide for improving communication and getting what you want in your relationships. New York: HarperCollins.
- Gray H, Lyth A, McKenna C, Stothard S, Tymms P, Copping L (2019) Sex differences in variability across nations in reading, mathematics and science: a meta-analytic extension of Baye and Monseur (2016). *Large-Scale Assess Educ* 7:1.
- Greenwald AG, Banaji MR (1995) Implicit social cognition: attitudes, self-esteem, and stereotypes. *Psychol Rev* 102:4–27.
- Greenwald AG, McGhee DE, Schwartz JL (1998) Measuring individual differences in implicit cognition: the implicit association test. *J Pers Soc Psychol* 74:1464–1480.
- Gulker JE, Mark AY, Monteith MJ (2013) Confronting prejudice: the who, what, and why of confrontation effectiveness. *Soc Influence* 8:280–293.
- Haines EL, Deaux K, Lofaro N (2016) The times they are a-changing. . . or are they not? A comparison of gender stereotypes, 1983–2014. *Psychol Women Q* 40:353–363.
- Halpern DF, Benbow CP, Geary DC, Gur RC, Hyde JS, Gernsbacher MA (2007) The science of sex differences in science and mathematics. *Psychol Sci Public Interest* 8:1–51.
- Halpern DF, Straight CA, Stephenson CL (2011a) Beliefs about cognitive gender differences: accurate for direction, underestimated for size. *Sex Roles* 64:336–347.
- Halpern DF, Beninger AS, Straight CA (2011b) Sex differences in intelligence. In: *The Cambridge handbook of intelligence* (Sternberg RJ, Kaufman SB, eds), pp 253–272. Cambridge: Cambridge UP.
- Handley IM, Brown ER, Moss-Racusin CA, Smith JL (2015) Quality of evidence revealing subtle gender biases in science is in the eye of the beholder. *Proc Natl Acad Sci U S A* 112:13201–13206.
- Hargens LL, Long JS (2002) Demographic inertia and women's representation among faculty in higher education. *J Higher Educ* 73:494–517.
- Harvard University Office of the Senior Vice Provost (2014) 2013 Harvard faculty climate survey results. Cambridge, MA: Harvard University.
- Hechtman LA, Moore NP, Schulkey CE, Miklos AC, Calcagno AM, Aragon R, Greenberg JH (2018) NIH funding longevity by gender. *Proc Natl Acad Sci U S A* 115:7943–7948.
- Hennes EP, Pietri ES, Moss-Racusin CA, Mason KA, Dovidio JF, Brescoll VL, Handelsman J (2018) Increasing the perceived malleability of gender bias using a modified video intervention for diversity in STEM (VIDS). *Group Process Intergroup Relations* 21:788–809.
- Herrmann SD, Adelman RM, Bodford JE, Graudejus O, Okun MA, Kwan VS (2016) The effects of a female role model on academic performance and persistence of women in STEM courses. *Basic Appl Soc Psychol* 38:258–268.
- Hill C, Corbett C, St Rose A (2010) Why so few? Women in science, technology, engineering, and mathematics. Washington, DC: Association of University Women.
- Holman L, Stuart-Fox D, Hauser CE (2018) The gender gap in science: how long until women are equally represented? *PLoS Biol* 16:e2004956.
- Hosek SD, Cox AG, Ghosh-Dastidar B, Kofner A, Ramphal N, Scott J, Berry SH (2005) Gender differences in major federal external grant programs. Santa Monica, CA: National Science Foundation.
- Huang Y, Osborne D, Sibley CG (2018) The gradual move toward gender equality. *Soc Psychol Pers Sci* 10:335–344.
- Huguet P, Régner I (2009) Counter-stereotypic beliefs in math do not protect school girls from stereotype threat. *J Exp Soc Psychol* 45:1024–1027.
- Hyde JS (2005) The gender similarities hypothesis. *Am Psychol* 60:581–592.
- Hyde JS (2014) Gender similarities and differences. *Annu Rev Psychol* 65:373–398.

- Hyde JS (2016) Sex and cognition: gender and cognitive functions. *Curr Opin Neurobiol* 38:53–56.
- Hyde JS, Linn MC (1988) Gender differences in verbal ability: a meta-analysis. *Psychol Bull* 104:53–69.
- Hyde JS, Mertz JE (2009) Gender, culture, and mathematics performance. *Proc Natl Acad Sci U S A* 106:8801–8807.
- Hyde JS, Lindberg SM, Linn MC, Ellis AB, Williams CC (2008) Diversity: gender similarities characterize math performance. *Science* 321:494–495.
- Jost JT, Banaji MR (1994) The role of stereotyping in system justification and the production of false consciousness. *Br J Soc Psychol* 33:1–27.
- Jost JT, Banaji MR, Nosek BA (2004) A decade of system justification theory: accumulated evidence of conscious and unconscious bolstering of the status quo. *Polit Psychol* 25:881–919.
- Kaatz A, Gutierrez B, Carnes M (2014) Threats to objectivity in peer review: the case of gender. *Trends Pharmacol Sci* 35:371–373.
- Kang SK, Kaplan S (2019) Working toward gender diversity and inclusion in medicine: myths and solutions. *Lancet* 393:579–586.
- Keller EF (1985) Reflections on gender and science. New Haven, CT: Yale UP.
- Knobloch-Westerwick S, Glynn CJ, Huge M (2013) The Matilda effect in science communication: an experiment on gender bias in publication quality perceptions and collaboration interest. *Sci Commun* 35:603–625.
- Kolev J, Fuentes-Medel Y, Murray F (2019) Is blinded review enough? How gendered outcomes arise even under anonymous evaluation. Cambridge, MA: National Bureau of Economic Research Working Paper Series.
- Krawczyk M, Smyk M (2016) Author's gender affects rating of academic articles: evidence from an incentivized, deception-free laboratory experiment. *Eur Econ Rev* 90:326–335.
- Kurdi B, Seitchik AE, Axt JR, Carroll TJ, Karapetyan A, Kaushik N, Tomezsko D, Greenwald AG, Banaji MR (2019) Relationship between the Implicit Association Test and intergroup behavior: a meta-analysis. *Am Psychol* 74:569–586.
- Landivar LC (2013) The relationship between science and engineering education and employment in STEM occupations. American Community Survey Reports. Retrieved from <https://www.census.gov/prod/2013pubs/acs-23.pdf>.
- Lebrecht S, Bar M, Barrett LF, Tarr MJ (2012) Micro-valences: perceiving affective valence in everyday objects. *Front Psychol* 3:107.
- Ledin A, Bornmann L, Gannon F, Wallon G (2007) A persistent problem: traditional gender roles hold back female scientists. *EMBO Rep* 8:982–987.
- Legewie J, DiPrete TA (2012) High school environments, STEM orientations, and the gender gap in science and engineering degrees. *Soc Educ* 87:259–280.
- Leslie SJ, Cimpian A, Meyer M, Freeland E (2015) Expectations of brilliance underlie gender distributions across academic disciplines. *Science* 347:262–265.
- Lincoln AE, Pincus S, Koster JB, Leboy PS (2012) The Matilda effect in science: awards and prizes in the US, 1990s and 2000s. *Soc Stud Sci* 42:307–320.
- Lindberg SM, Hyde JS, Petersen JL, Linn MC (2010) New trends in gender and mathematics performance: a meta-analysis. *Psychol Bull* 136:1123–1135.
- Loyd DL, Wang CS, Phillips KW, Lount RB (2013) Social category diversity promotes premeeting elaboration: the role of relationship focus. *Org Sci* 24:757–772.
- Marinak BA, Gambrell LB (2010) Reading motivation: exploring the elementary gender gap. *Lit Res Instruct* 49:129–141.
- Master A, Cheryan S, Meltzoff AN (2016) Computing whether she belongs: stereotypes undermine girls' interest and sense of belonging in computer science. *J Educ Psychol* 108:424–437.
- McPherson E, Park B, Ito TA (2018) The role of prototype matching in science pursuits: perceptions of scientists that are inaccurate and diverge from self-perceptions predict reduced interest in a science career. *Pers Soc Psychol Bull* 44:881–898.
- Metcalfe H (2015) Improving recognition through awards: how to mitigate bias in awards. INSIGHT into Diversity. Retrieved from <https://www.insightintodiversity.com/improving-recognition-through-awards-how-to-mitigate-bias-in-awards/>.
- Meyer M, Cimpian A, Leslie SJ (2015) Women are underrepresented in fields where success is believed to require brilliance. *Front Psychol* 6:235.
- Michelsmore K, Sassler S (2017) Explaining the gender wage gap in STEM: does field sex composition matter? *Russell Sage Found J Soc Sci* 2:194.
- Milkman KL, Akinola M, Chugh D (2015) What happens before? A field experiment exploring how pay and representation differentially shape bias on the pathway into organizations. *J Appl Psychol* 100:1678–1712.
- Miller DI, Eagly AH, Linn MC (2015) Women's representation in science predicts national gender-science stereotypes: evidence from 66 nations. *J Educ Psychol* 107:631–644.
- Miller DI, Halpern DF (2014) The new science of cognitive sex differences. *Trends Cogn Sci* 18:37–45.
- Miller DI, Wai J (2015) The bachelor's to Ph.D. STEM pipeline no longer leaks more women than men: a 30-year analysis. *Front Psychol* 6:37.
- Moss-Racusin CA, Dovidio JF, Brescoll VL, Graham MJ, Handelsman J (2012) Science faculty's subtle gender biases favor male students. *Proc Natl Acad Sci U S A* 109:16474–16479.
- Moss-Racusin CA, van der Toorn J, Dovidio JF, Brescoll VL, Graham MJ, Handelsman J (2014) Scientific diversity interventions. *Science* 343:615–616.
- Moss-Racusin CA, Molenda AK, Cramer CR (2015) Can evidence impact attitudes? Public reactions to evidence of gender bias in STEM fields. *Psychol Women Q* 39:194–209.
- Moss-Racusin CA, Pietri ES, Hennes EP, Dovidio JF, Brescoll VL, Roussos G, Handelsman J (2018) Reducing STEM gender bias with VIDS (Video interventions for diversity in STEM). *J Exp Psychol Appl* 24:236–260.
- Murray D, Siler K, Larivière V, Chan WM, Collings AM, Raymond J, Sugimoto CR (2019) Gender and international diversity improves equity in peer review. *bioRxiv* 400515.
- National Academies of Sciences Engineering and Medicine (2018) Sexual harassment of women: climate, culture, and consequences in academic sciences, engineering, and medicine. Washington, DC: National Academies.
- National Academy of Sciences (2006) Beyond bias and barriers: fulfilling the potential of women in academic science and engineering. Washington, DC: National Academies.
- National Academy of Sciences (2010) Gender differences at critical transitions in the careers of science, engineering, and mathematics faculty. Washington, DC: National Academies.
- National Science Foundation (2018) Science and engineering indicators 2018. Alexandria, VA: National Science Foundation.
- National Science Foundation National Center for Science and Engineering Statistics (2017) Women, minorities, and persons with disabilities in science and engineering: 2017 digest. Alexandria, VA: National Science Foundation.
- Nguyen HH, Ryan AM (2008) Does stereotype threat affect test performance of minorities and women? A meta-analysis of experimental evidence. *J Appl Psychol* 93:1314–1334.
- Nosek BA, Smyth FL (2007) A multitrait-multimethod validation of the implicit association test: implicit and explicit attitudes are related but distinct constructs. *Exp Psychol* 54:14–29.
- Nosek BA, Smyth FL (2011) Implicit social cognitions predict sex differences in math engagement and achievement. *Am Educ Res J* 48:1125–1156.
- Nosek BA, Banaji MR, Greenwald AG (2002) Math=Male, Me=Female, therefore math does not equal me. *J Pers Soc Psychol* 83:44–59.
- Nosek BA, Smyth FL, Hansen JJ, Devos T, Lindner NM, Ranganath KA, Banaji MR (2007) Pervasiveness and correlates of implicit attitudes and stereotypes. *Eur Rev Soc Psychol* 18:36–88.
- Nosek BA, Smyth FL, Sriram N, Lindner NM, Devos T, Ayala A, Bar-Anan Y, Bergh R, Cai H, Gonsalkorale K, Kesebir S, Maliszewski N, Neto F, Olli E, Park J, Schnabel K, Shiomura K, Tulbure BT, Wiers RW, Somogyi M, et al. (2009) National differences in gender-science stereotypes predict national sex differences in science and math achievement. *Proc Natl Acad Sci U S A* 106:10593–10597.
- Oliveira DF, Ma Y, Woodruff TK, Uzzi B (2019) Comparison of national institutes of health grant amounts to first-time male and female principal investigators. *JAMA* 321:898–900.
- Page SE (2011) Diversity and complexity. Princeton, NJ: Princeton UP.
- Page SE (2018) The diversity bonus. Princeton, NJ: Princeton UP.
- Paluck EL, Green DP (2009) Prejudice reduction: what works? A review and assessment of research and practice. *Annu Rev Psychol* 60:339–367.
- Paluck EL, Green S, Green DP (2018) The contact hypothesis reevaluated. *Behav Public Policy* 1–30.
- Parker LR, Monteith MJ, Moss-Racusin CA, Van Camp AR (2018) Promoting concern about gender bias with evidence-based confrontation. *J Exp Soc Psychol* 74:8–23.
- Penner AM, Paret M (2008) Gender differences in mathematics achievement: exploring the early grades and the extremes. *Soc Sci Res* 37:239–253.
- Penner AM, Paret M (2007) Gender differences in mathematics achieve-

- ment: exploring the early grades and the extremes. *Social Science Research* 37:239–253.
- Pietri ES, Moss-Racusin CA, Dovidio JF, Guha D, Roussos G, Brescoll VL, Handelsman J (2017) Using video to increase gender bias literacy toward women in science. *Psychol Women Q* 41:175–196.
- Pohlhaus JR, Jiang H, Wagner RM, Schaffer WT, Pinn VW (2011) Sex differences in application, success, and funding rates for NIH extramural programs. *Acad Med* 86:759–767.
- Pope DG, Sydnor JR (2010) Geographic variation in the gender differences in test scores. *J Econ Perspect* 24:95–108.
- Popejoy AB, Leboy PS (2018) AAS and the under-recognition of women for awards and prizes. Washington, DC: Association for Women in Science.
- Rabiner D, Coie JD (2000) Early attention problems and children's reading achievement: a longitudinal investigation. *J Am Acad Child Adolesc Psychiatry* 39:859–867.
- Radford AW, Fritch LB, Leu K, Duprey M, Christopher EM (2018) High school longitudinal study of 2009 (HLS:09). Second follow-up: a first look at the fall 2009 ninth-graders in 2016 (NCES 2018–139). Washington DC: Department of Education National Center for Education Statistics.
- RAISE Project (2018) RAISE Project: recognizing the achievements of women in science, technology, engineering, mathematics, and medicine. Bethesda, MD: RAISE Project.
- Rao AD, Nicholas SE, Kachniarz B, Hu C, Redmond KJ, Deville C, Wright JL, Page BR, Terezakis S, Viswanathan AN, DeWeese TL, Fivush BA, Alcorn SR (2018) Association of a simulated institutional gender equity initiative with gender-based disparities in medical school faculty salaries and promotions. *JAMA Netw Open* 1:e186054.
- Regner, I, Thinus-Blanc, C, Netter, A, Schmader, T, Huguet, P (2019) Committees with implicit biases promote fewer women when they do not believe gender bias exists. *Nature Human Behaviour*, in press.
- Reilly D, Neumann DL, Andrews G (2019) Gender differences in reading and writing achievement: evidence from the National Assessment of Educational Progress (NAEP). *Am Psychol* 74:445–458.
- Reuben E, Sapienza P, Zingales L (2014) How stereotypes impair women's careers in science. *Proc Natl Acad Sci U S A* 111:4403–4408.
- Rhodes M, Leslie SJ, Yee KM, Saunders K (2019) Subtle linguistic cues increase girls' engagement in science. *Psychol Sci* 30:455–466.
- Saad L (2017) A sea change in support for working women. Washington, DC: Gallup.
- Schrouff J, Pischedda D, Genon S, Fryns G, Pinho AL, Vassena E, Ferreira FS (2019) Gender bias in (neuro)science: facts, consequences, and solutions. *Eur J Neurosci*. Advance online publication. Retrieved Feb. 27, 2019. doi: 10.1111/ejn.14397.
- Shaw AK, Stanton DE (2012) Leaks in the pipeline: separating demographic inertia from ongoing gender differences in academia. *Proc R Soc Lond B Biol Sci* 279:3736–3741.
- Shen YA, Webster JM, Shoda Y, Fine I (2018) Persistent underrepresentation of women's science in high profile journals. *bioRxiv* 275362.
- Smeding A (2012) Women in science, technology, engineering, and mathematics (STEM): an investigation of their implicit gender stereotypes and stereotypes' connectedness to math performance. *Sex Roles* 67:617–629.
- Smyth FL, Nosek BA (2015) On the gender-science stereotypes held by scientists: explicit accord with gender-ratios, implicit accord with scientific identity. *Front Psychol* 6:415.
- Spelke ES (2005) Sex differences in intrinsic aptitude for mathematics and science? A critical review. *Am Psychol* 60:950–958.
- Spencer SJ, Steele CM, Quinn DM, Crocker J, Eron L, Markus H, von Hippel W (1999) Stereotype threat and women's math performance. *J Exp Soc Psychol* 35:4–28.
- Spice B (2016) Women are almost half of Carnegie Mellon's incoming computer science undergraduates. Pittsburgh: Carnegie Mellon University.
- Steinpreis R, Anders K, Ritzke D (1999) The impact of gender on the review of the curricula vitae of job applicants and tenure candidates: a national empirical study. *Sex Roles* 41:509–528.
- Stoet G, Geary DC (2012) Can stereotype threat explain the gender gap in mathematics performance and achievement? *Rev Gen Psychol* 16:93–102.
- Storage D, Horne Z, Cimpian A, Leslie SJ (2016) The frequency of “brilliant” and “genius” in teaching evaluations predicts the representation of women and African Americans across fields. *PLoS One* 11:e0150194.
- Stout JG, Dasgupta N, Hunsinger M, McManus MA (2011) STEMing the tide: using ingroup experts to inoculate women's self-concept in science, technology, engineering, and mathematics (STEM). *J Pers Soc Psychol* 100:255–270.
- Su R, Rounds J, Armstrong PI (2009) Men and things, women and people: a meta-analysis of sex differences in interests. *Psychol Bull* 135:859–884.
- Swim JK, Aikin KJ, Hall WS, Hunter BA (1995) Sexism and racism: old-fashioned and modern prejudices. *J Pers Soc Psychol* 68:199–214.
- Tamblyn R, Girard N, Qian CJ, Hanley J (2018) Assessment of potential bias in research grant peer review in Canada. *Can Med Assoc J* 190:E489–E499.
- Tomkins A, Zhang M, Heavlin WD (2017) Reviewer bias in single- versus double-blind peer review. *Proc Natl Acad Sci U S A* 114:201707323.
- Tricco AC, Thomas SM, Antony J, Rios P, Robson R, Pattani R, Ghassemi M, Sullivan S, Selvaratnam I, Tannenbaum C, Straus SE (2017) Strategies to prevent or reduce gender bias in peer review of research grants: a rapid scoping review. *PLoS One* 12:e0169718.
- Tyler-Wood T, Ellison A, Lim O, Periaithiruvadi S (2012) Bringing up girls in science (BUGS): the effectiveness of an afterschool environmental science program for increasing female Students' interest in science careers. *J Sci Educ Technol* 21:46–55.
- U.S. Government Accountability Office (2015) Women in STEM research: better data and information sharing could improve oversight of federal grant-making and Title IX compliance. GAO-16–14. Washington, DC: U.S. Government Accountability Office.
- Valantine HA, Collins FS (2015) National Institutes of Health addresses the science of diversity. *Proc Natl Acad Sci U S A* 112:12240–12242.
- Voyer D (2011) Time limits and gender differences on paper-and-pencil tests of mental rotation: a meta-analysis. *Psychon Bull Rev* 18:267–277.
- Voyer D, Voyer S, Bryden MP (1995) Magnitude of sex differences in spatial abilities: a meta-analysis and consideration of critical variables. *Psychol Bull* 117:250–270.
- Voyer D, Postma A, Brake B, Imperato-McGinley J (2007) Gender differences in object location memory: a meta-analysis. *Psychon Bull Rev* 14:23–28.
- Wai J, Cacchio M, Putallaz M, Makel MC (2010) Sex differences in the right tail of cognitive abilities: a 30 year examination. *Intelligence* 38:412–423.
- Waisbren SE, Bowles H, Hasan T, Zou KH, Emans SJ, Goldberg C, Christou H (2008) Gender differences in research grant applications and funding outcomes for medical school faculty. *J Womens Health (Larchmt)* 17:207–214.
- Webb TJ, O'Hara B, Freckleton RP (2008) Does double-blind review favor female authors? *Trends Ecol Evol* 23:351–353; author reply 353–354.
- Weeden KA, Thébaud S, Gelbgiser D (2017) Degrees of difference: gender segregation of U.S. doctorates by field and program prestige. *Sociol Sci* 4:123–150.
- Weisgram ES, Bigler RS (2006) Girls and science careers: the role of altruistic values and attitudes about scientific tasks. *J Appl Dev Psychol* 27:326–348.
- Weisgram ES, Dinella LM, Fulcher M (2011) The role of masculinity/femininity, values, and occupational value affordances in shaping young men's and women's occupational choices. *Sex Roles* 65:243–258.
- Wenneras C, Wold A (1997) Nepotism and sexism in peer-review. *Nature* 387:341–343.
- West JD, Jacquet J, King MM, Correll SJ, Bergstrom CT (2013) The role of gender in scholarly authorship. *PLoS One* 8:e66212.
- Williams WM, Ceci SJ (2015) National hiring experiments reveal 2:1 faculty preference for women on STEM tenure track. *Proc Natl Acad Sci U S A* 112:5360–5365.
- Witteman HO, Hendricks M, Straus S, Tannenbaum C (2019) Are gender gaps due to evaluations of the applicant or the science? A natural experiment at a national funding agency. *Lancet* 393:531–540.
- World Bank (2018) Labor force, female (% of total labor force) World Bank Data. Washington, DC: World Bank.
- Xu YJ (2008) Gender disparity in STEM disciplines: a study of faculty attrition and turnover intentions. *Res Higher Educ* 49:607–624.
- Zell E, Krizan Z, Teeter SR (2015) Evaluating gender similarities and differences using metasynthesis. *Am Psychol* 70:10–20.