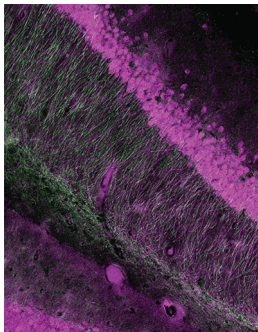


JNeurosci

THE JOURNAL OF NEUROSCIENCE

December 9, 2020 • Volume 40 Number 50 • www.jneurosci.org



Cover legend: This confocal image shows an adult mouse hippocampus in which serine racemase (magenta) colocalizes with microtubule associated protein 2 (green) in the apical dendrites of CA1 pyramidal neurons in stratum radiatum. For more information see the article by Wong et al. (pages 9564–9575). Cover Image: Oluwarotimi Folorunso.

9547 **This Week in The Journal**

Editorial

9548 **End of a [Paper] Era**
Marina R. Picciotto

Journal Club

9549 **Intracortical Localization of a Promising Pain Biomarker**
Christopher Joseph

Research Articles

CELLULAR/MOLECULAR

- 9552 **Loss of TREM2 Confers Resilience to Synaptic and Cognitive Impairment in Aged Mice**
Wenhui Qu and Ling Li
- 9564 **Postsynaptic Serine Racemase Regulates NMDA Receptor Function**
Jonathan M. Wong, Oluwarotimi O. Folorunso, Eden V. Barragan, Cristina Berciu, Theresa L. Harvey, Joseph T. Coyle, Darrick T. Balu, and John A. Gray
- 9576 **CaMKII α -Positive Interneurons Identified via a microRNA-Based Viral Gene Targeting Strategy**
Marianna K. Keaveney, Bahar Rahsepar, Hua-an Tseng, Fernando R. Fernandez, Rebecca A. Mount, Tina Ta, John A. White, Jim Berg, and Xue Han
- 9589 **FGF13 Is Required for Histamine-Induced Itch Sensation by Interaction with Na v 1.7**
Fei Dong, Haixiang Shi, Liu Yang, Huaqing Xue, Manyi Wei, Yan-Qing Zhong, Lan Bao, and Xu Zhang

DEVELOPMENT/PLASTICITY/REPAIR

- 9602 **Macrophage-Derived Vascular Endothelial Growth Factor-A Is Integral to Neuromuscular Junction Reinnervation after Nerve Injury**
Chuieng-Yi Lu, Katherine B. Santosa, Albina Jablonka-Shariff, Bianca Vannucci, Anja Fuchs, Isaiah Turnbull, Deng Pan, Matthew D. Wood, and Alison K. Snyder-Warwick

SYSTEMS/CIRCUITS

- 9617 **Dopamine Signaling in Wake-Promoting Clock Neurons Is Not Required for the Normal Regulation of Sleep in *Drosophila***
Florescia Fernandez-Chiappe, Christiane Hermann-Luibl, Alina Peteranderl, Nils Reinhard, Pingkalai R. Senthilan, Marie Hieke, Mareike Selcho, Taishi Yoshii, Ori T. Shafer, Nara I. Muraro, and Charlotte Helfrich-Förster

- 9634 **Complementary Inhibitory Weight Profiles Emerge from Plasticity and Allow Flexible Switching of Receptive Fields**
Everton J. Agnes, Andrea I. Luppi, and Tim P. Vogels
- 9650 **Visual Stimulus Content in V4 Is Conveyed by Gamma-Rhythmic Information Packages**
Dmitriy Lisitsyn, Iris Grothe, Andreas K. Kreiter, and Udo A. Ernst
- 9663 **Spontaneous Network Coupling Enables Efficient Task Performance without Local Task-Induced Activations**
Leslie Allaman, Anaïs Mottaz, Andreas Kleinschmidt, and Adrian G. Guggisberg
- 9676 **Layer- and Cell Type-Specific Response Properties of Gustatory Cortex Neurons in Awake Mice**
Gulce Nazli Dikecligil, Dustin M. Graham, Il Memming Park, and Alfredo Fontanini
- 9692 **Mapping the Dynamic Recruitment of Spinal Neurons during Fictive Locomotion**
Vladimir Rancic, Klaus Ballanyi, and Simon Gosgnach
- 9701 **Activation of Granule Cell Interneurons by Two Divergent Local Circuit Pathways in the Rat Olfactory Bulb**
R. Todd Pressler and Ben W. Strowbridge

BEHAVIORAL/COGNITIVE

- 9715 **Converging Evidence for Differential Specialization and Plasticity of Language Systems**
Kshipra Gurunandan, Jaione Arnaez-Telleria, Manuel Carreiras, and Pedro M. Paz-Alonso
- 9725 **Metaplasticity in the Ventral Pallidum as a Potential Marker for the Propensity to Gain Weight in Chronic High-Calorie Diet**
Shani Gendelis, Dorrit Inbar, Kineret Inbar, Shanee Mesner, and Yonatan M. Kupchik
- 9736 **Self-Controlled Choice Arises from Dynamic Prefrontal Signals That Enable Future Anticipation**
Daiki Tanaka, Ryuta Aoki, Shinsuke Suzuki, Masaki Takeda, Kiyoshi Nakahara, and Koji Jimura

NEUROBIOLOGY OF DISEASE

- 9751 **Astrocyte-Derived Estrogen Regulates Reactive Astrogliosis and is Neuroprotective following Ischemic Brain Injury**
Jing Wang, Gangadhara R. Sareddy, Yujiao Lu, Uday P. Pratap, Fulei Tang, Karah M. Greene, Pornjittra L. Meyre, Rajeshwar R. Tekmal, Ratna K. Vadlamudi, and Darrell W. Brann
- 9772 **Cell Type-Specific Oxidative Stress Genomic Signatures in the Globus Pallidus of Dopamine-Depleted Mice**
Alyssa J. Lawler, Ashley R. Brown, Rachel S. Bouchard, Noelle Toong, Yeonju Kim, Nitinram Velraj, Grant Fox, Michael Kleyman, Byungsoo Kang, Aryn H. Gittis, and Andreas R. Pfennig
- 9784 **Erratum:** The article “Two Routes to Incidental Memory under Arousal: Dopamine and Norepinephrine,” by John Thorp, David Clewett, and Monika Riegel, appeared on pages 1790–1792 of the February 26, 2020 issue. An erratum for this article appear on page 9784.

Acknowledgment of Reviewers (Online Only)

Collaborating Reviewers (Online Only)

Persons interested in becoming members of the Society for Neuroscience should contact the Membership Department at membership@sfn.org or 202-962-4911.

For current submission policies and manuscript preparation guidelines, authors should refer to our Information for Authors at <https://www.jneurosci.org/content/information-authors>.

Manuscripts should be submitted online at <https://jneurosci.msubmit.net>. Please contact the Central Office with any questions at jn@sfn.org or 202-962-4000.