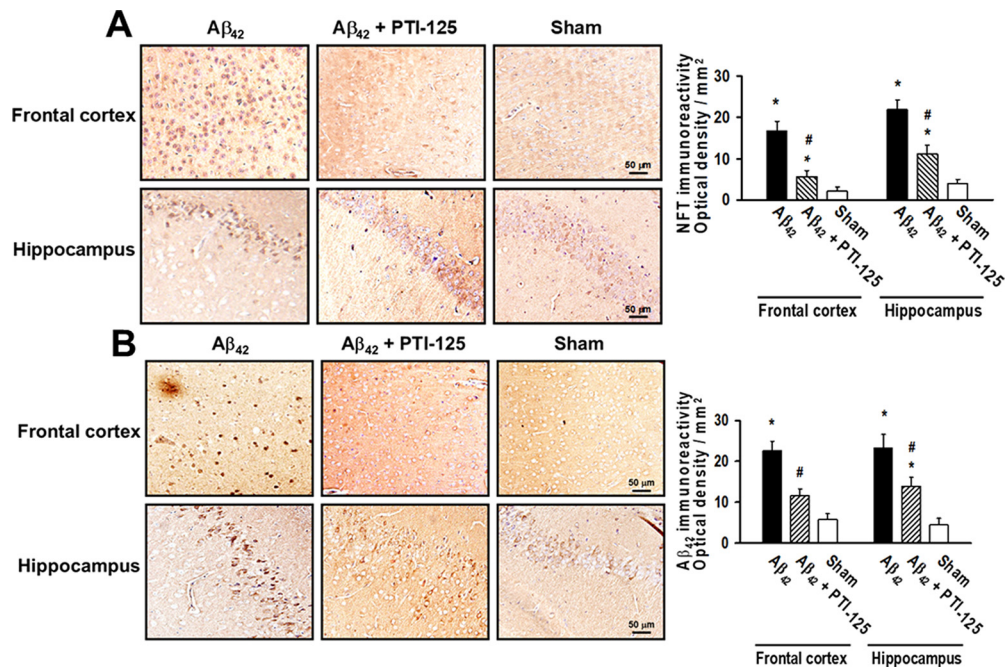


# Erratum

## Erratum: Wang et al., “Reducing Amyloid-Related Alzheimer’s Disease Pathogenesis by a Small Molecule Targeting Filamin A”

In the article “Reducing Amyloid-Related Alzheimer’s Disease Pathogenesis by a Small Molecule Targeting Filamin A,” by Hoau-Yan Wang, Kalindi Bakshi, Maya Frankfurt, Andres Stucky, Marissa Goberdhan, Sanket M. Shah, and Lindsay H. Burns, which appeared on pages 9773–9784 of the July 18, 2012 issue, a panel was duplicated in Figure 8B. The top left image in the Western blot panel in Figure 8B, representing  $A\beta_{42}$  immunostaining of FCX of the  $A\beta_{42}$  group, was duplicated from the top middle image in Figure 8A, representing immunostaining of the FCX of the PTI-125 +  $A\beta_{42}$  group. This error does not affect the conclusions of the article. The corrected figure is shown below. The authors regret this oversight.



**Figure 8.** *A*, Representative sections immunostained with an anti-NFT (phospho-tau) antibody show that PTI-125 treatment dramatically reduced NFT immunoreactivity in both prefrontal cortex and hippocampus of mice receiving ICV  $A\beta_{42}$  infusions. *B*, Representative sections immunostained for  $A\beta_{42}$  aggregates show that PTI-125 treatment greatly reduced  $A\beta_{42}$  deposits in both brain regions of  $A\beta_{42}$ -infused mice. Immunostaining was quantified by image analysis software.  $n = 7$  or  $8$ . \* $p < 0.01$  vs sham, vehicle; # $p < 0.01$  vs  $A\beta_{42}$ , vehicle.

To provide clarity on the integrity of bands in Figures 6, A and B, and 9A, the following images have been made available by the authors. Bands were cropped out in the original Western blots shown in Figure 6, A and B. Two additional lanes that repeated conditions (in different animals) were cropped out from the representative blots shown in the original figure. The original, uncropped blots of loading control bands in Figure 6, A and B, are shown below.

The original, uncropped blots for  $\beta$ -actin in Figure 9A are also shown below. The left image is the higher-resolution image with the additional bands cropped out, as seen in the full image on the right.

### Figure 6A and 6B – IR $\beta$ uncropped blot

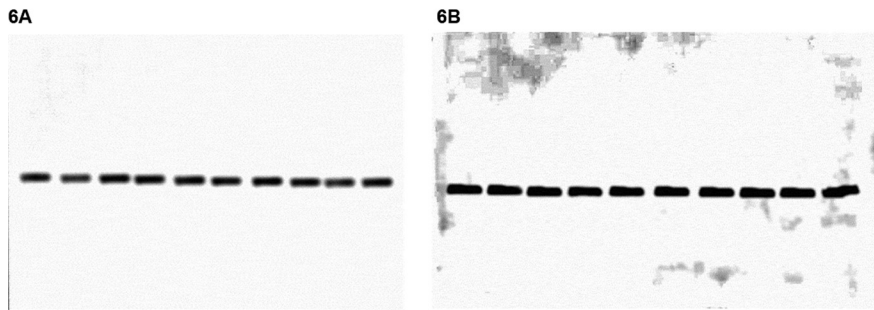


Figure 6.

### Figure 9A – $\beta$ -Actin uncropped blot

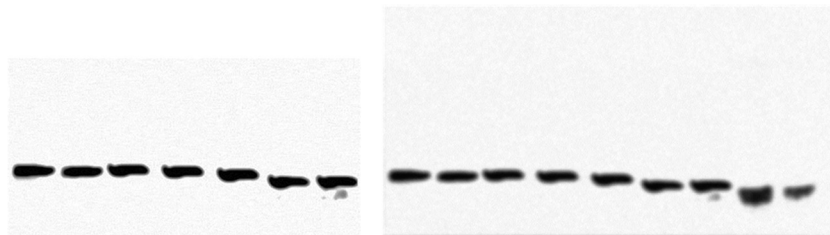


Figure 9.