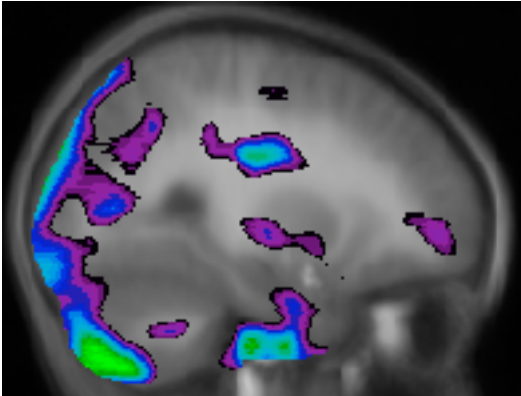


**Supplementary Figure 2:
Brain deformations observed in typical development in controls**



This figure illustrates the brain deformations in terms of relative voxel size changes observed in typical development measured in the controls (n=15) in the present study from time 1 to time 2 (15 months later). These brain deformations found over 15 months (from 5-7 years old) in the controls in frontal, temporal, and parieto-occipital brain areas are consistent with previous findings in normal development in similar age ranges (e.g. Sowell et al., 2004).