

mouse e11.5 brachial

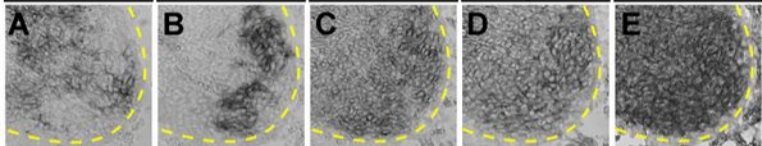
*Lim1*

*Isl1*

*Src*

*Fyn*

*Csk*



chick HH st. 25/26 (e5) lumbar

mouse e11.5 brachial

mouse e11.5 lumbar

*Yes*

*Lyn*

*Yes*

*Lyn*

*Yes*

*Lyn*

