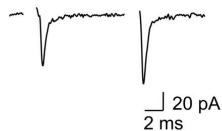
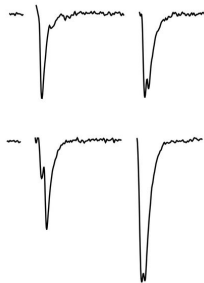
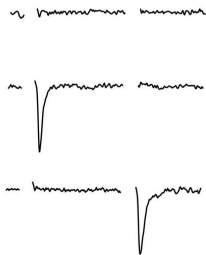


Unacceptable traces:

Acceptable

Release failures

Multiple release



Suppl Fig 1. Post-synaptic facilitation may only be observed when the same synapse is activated by both pulses. Therefore, whenever either of the pulses failed to evoke an EPSC, the entire sweep was discarded. In addition, multiple peaks indicative of multisynaptic activation were also discarded. Threshold stimulation through a narrow opening electrode (5-7 MOhm pipette) was used to avoid activating multiple synapses